



[Go to Product page](#)

Datasheet for ABIN3022309

anti-CTNND1 antibody (AA 573-832)

12 Images

Overview

Quantity:	100 µL
Target:	CTNND1
Binding Specificity:	AA 573-832
Reactivity:	Human
Host:	Rabbit
Clonality:	Polyclonal
Conjugate:	This CTNND1 antibody is un-conjugated
Application:	Western Blotting (WB), Immunohistochemistry (IHC)

Product Details

Immunogen:	Recombinant fusion protein containing a sequence corresponding to amino acids 573-832 of human delta-Catenin/p120 Catenin (NP_001078938.1).
Sequence:	ILEASAGAIQ NLCAGRWTYG RYIRSALRQE KALSAIADLL TNEHERVVKA ASGALRNLA VDARNKELIGK HAIPNLVKNL PGGQQNSSWN FSEDTVISIL NTINEVIAEN LEAAKKLRET QGIEKLVLIN KSGNRSEKEV RAAALVLQTI WGYKELRKPL EKEGWKKSDF QVNLNNASRS QSSHSYDDST LPLIDRNQKS DKKPDREEIQ MSNMGSNTKS LDNNYSTPNE RGDHNRTLDR SGDLGDMEPL KGTTPLMQKI
Isotype:	IgG
Cross-Reactivity:	Human, Mouse, Rat
Characteristics:	Polyclonal Antibodies
Purification:	Affinity purification

Target Details

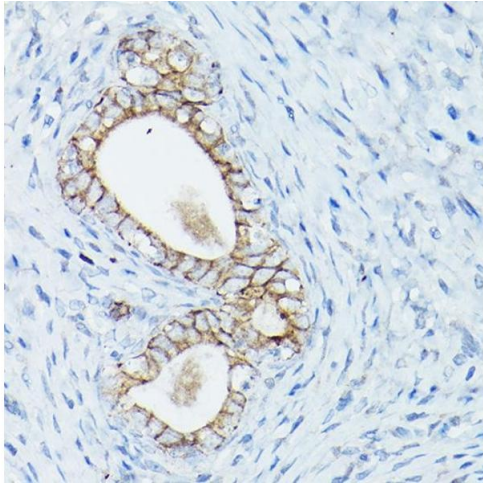
Target:	CTNND1
Alternative Name:	CTNND1 (CTNND1 Products)
Background:	This gene encodes a member of the Armadillo protein family, which function in adhesion between cells and signal transduction. Multiple translation initiation codons and alternative splicing result in many different isoforms being translated. Not all of the full-length natures of the described transcript variants have been determined. Read-through transcription also exists between this gene and the neighboring upstream thioredoxin-related transmembrane protein 2 (TMX2) gene.,CAS,CTNND,P120CAS,P120CTN,p120,p120(CAS),p120(CTN),CTNND1,Signal Transduction,G protein signaling,Cell Biology & Developmental Biology,Cell Adhesion,Tight Junctions,Cytoskeleton,Microfilaments,Wnt/ β -Catenin Signaling Pathway,Stem Cells,CTNND1
Molecular Weight:	65-72 kDa/90-108 kDa
Gene ID:	1500
UniProt:	O60716
Pathways:	EGFR Signaling Pathway , Neurotrophin Signaling Pathway , Cell-Cell Junction Organization , CXCR4-mediated Signaling Events , Platelet-derived growth Factor Receptor Signaling

Application Details

Application Notes:	WB,1:500 - 1:2000,IHC,1:50 - 1:200
Restrictions:	For Research Use only

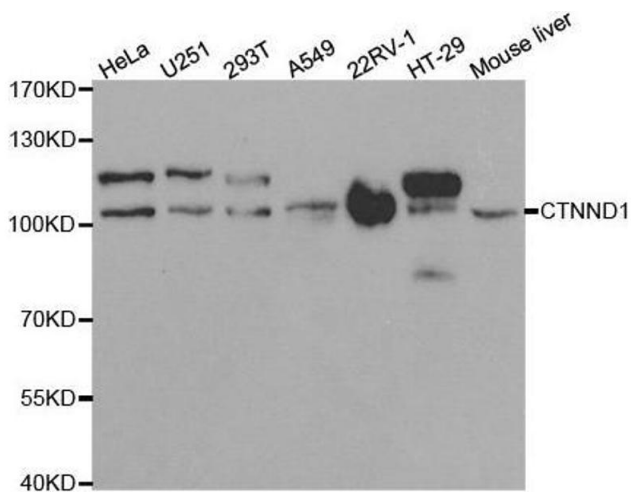
Handling

Format:	Liquid
Buffer:	PBS with 0.02 % sodium azide,50 % glycerol, pH 7.3.
Preservative:	Sodium azide
Precaution of Use:	This product contains Sodium azide: a POISONOUS AND HAZARDOUS SUBSTANCE which should be handled by trained staff only.
Handling Advice:	Avoid freeze / thaw cycles
Storage:	-20 °C
Storage Comment:	Store at -20°C. Avoid freeze / thaw cycles.



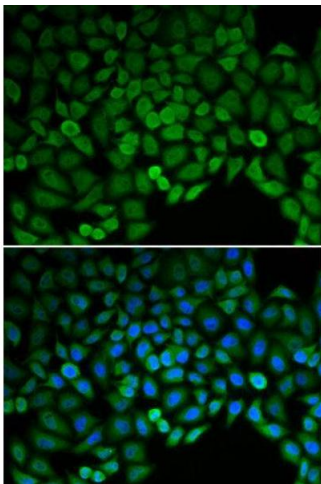
Immunohistochemistry

Image 1. Immunohistochemistry of paraffin-embedded rat uterus using δ -Catenin/p120 Catenin Rabbit pAb (ABIN3022308, ABIN3022309, ABIN3022310, ABIN1512791 and ABIN6218725) at dilution of 1:50 (40x lens). Perform high pressure antigen retrieval with 10 mM citrate buffer pH 6.0 before commencing with IHC staining protocol.



Western Blotting

Image 2. Western blot analysis of extracts of various cell lines, using CTNND1 antibody.



Immunofluorescence

Image 3.

Please check the [product details page](#) for more images. Overall 12 images are available for ABIN3022309.