

Datasheet for ABIN3022346
anti-GRK2 antibody (AA 440-689)



[Go to Product page](#)

6 Images

Overview

Quantity:	100 µL
Target:	GRK2 (ADRBK1)
Binding Specificity:	AA 440-689
Reactivity:	Human
Host:	Rabbit
Clonality:	Polyclonal
Conjugate:	This GRK2 antibody is un-conjugated
Application:	Western Blotting (WB), Immunohistochemistry (IHC)

Product Details

Immunogen:	Recombinant fusion protein containing a sequence corresponding to amino acids 440-689 of human GRK2 (NP_001610.2).
Sequence:	LGRGAQEVKE SPFFRSLDWQ MVFLQKYPPP LIPPRGEVNA ADAFDIGSFD EEDTKGIKLL DSDQELYRNF PLTISERWQQ EVAETVFDTI NAETDRLEAR KKAKNKQLGH EEDYALGKDC IMHGYSKMG NPFLTQWQRR YFYLFNRLR WRGEGEAPQS LLTMEEIQSV EETQIKERKC LLLKIRGGKQ FILQCSDPE LVQWKELRD AYREAQLVQ RVPKMKNKPR SPVVLSKVP LVQRGSANGL
Isotype:	IgG
Cross-Reactivity:	Human, Mouse, Rat
Characteristics:	Polyclonal Antibodies
Purification:	Affinity purification

Target Details

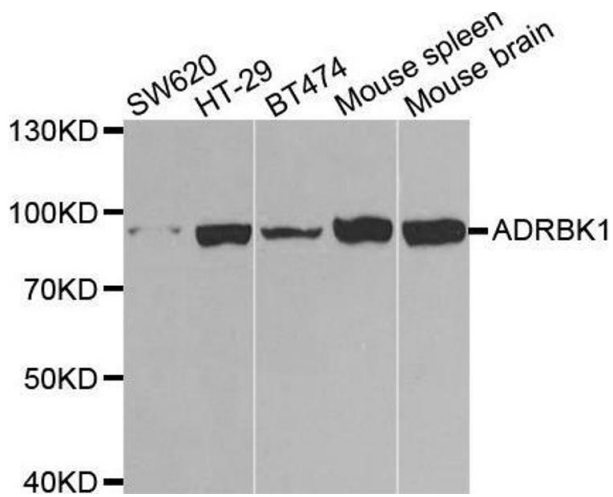
Target:	GRK2 (ADRBK1)
Alternative Name:	GRK2 (ADRBK1 Products)
Background:	<p>The product of this gene phosphorylates the beta-2-adrenergic receptor and appears to mediate agonist-specific desensitization observed at high agonist concentrations. This protein is an ubiquitous cytosolic enzyme that specifically phosphorylates the activated form of the beta-adrenergic and related G-protein-coupled receptors. Abnormal coupling of beta-adrenergic receptor to G protein is involved in the pathogenesis of the failing heart.,GRK2,ADRBK1,BARK1,BETA-ARK1,Signal Transduction,G protein signaling,G-Protein-Coupled Receptors(GPCR),G2/M DNA Damage Checkpoint,Kinase,Serine/threonine kinases,Immunology & Inflammation,Neuroscience,GRK2</p>
Molecular Weight:	79 kDa
Gene ID:	156
UniProt:	P25098
Pathways:	EGFR Signaling Pathway , Neurotrophin Signaling Pathway , Regulation of G-Protein Coupled Receptor Protein Signaling , CXCR4-mediated Signaling Events , G-protein mediated Events , Interaction of EGFR with phospholipase C-gamma , Thromboxane A2 Receptor Signaling

Application Details

Application Notes:	WB,1:500 - 1:2000,IHC,1:50 - 1:200
Restrictions:	For Research Use only

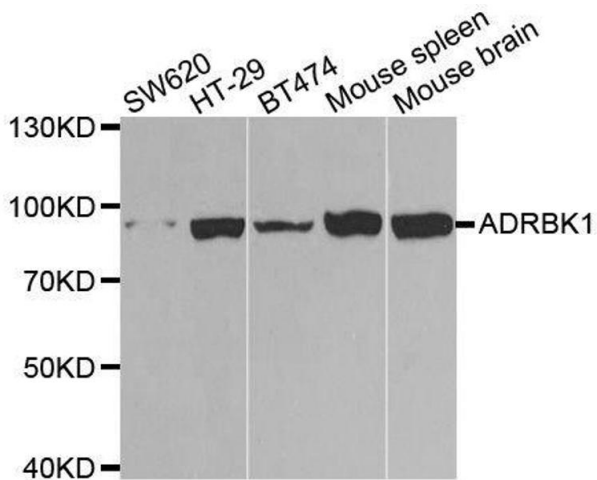
Handling

Format:	Liquid
Buffer:	PBS with 0.02 % sodium azide,50 % glycerol, pH 7.3.
Preservative:	Sodium azide
Precaution of Use:	This product contains Sodium azide: a POISONOUS AND HAZARDOUS SUBSTANCE which should be handled by trained staff only.
Handling Advice:	Avoid freeze / thaw cycles
Storage:	-20 °C
Storage Comment:	Store at -20°C. Avoid freeze / thaw cycles.



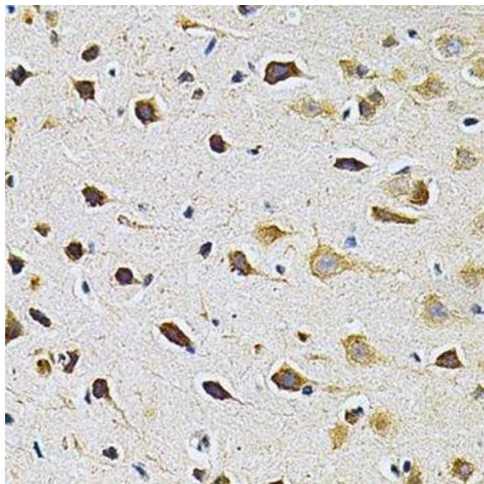
Western Blotting

Image 1. Western blot analysis of extracts of various cell lines, using ADRBK1 antibody.



Western Blotting

Image 2. Western blot analysis of extracts of various cell lines, using ADRBK1 antibody.



Immunohistochemistry (Paraffin-embedded Sections)

Image 3. Immunohistochemistry of paraffin-embedded rat brain using ADRBK1 Antibody.

Please check the [product details page](#) for more images. Overall 6 images are available for ABIN3022346.