

Datasheet for ABIN3022379
anti-SLC22A5 antibody (AA 1-180)

3 Images

[Go to Product page](#)

Overview

Quantity:	100 µL
Target:	SLC22A5
Binding Specificity:	AA 1-180
Reactivity:	Human
Host:	Rabbit
Clonality:	Polyclonal
Conjugate:	This SLC22A5 antibody is un-conjugated
Application:	Western Blotting (WB)

Product Details

Immunogen:	Recombinant fusion protein containing a sequence corresponding to amino acids 1-180 of human SLC22A5 (NP_003051.1).
Sequence:	MRDYDEVTAFLGEWGPFQRLIFFLLSASII PNGFTGLSSV FLIATPEHRC RVPDAANLSS AWRNHTVPLRLRDGREVPHS CRRYRLATIA NFSALGLEPG RDVDLGQLEQ ESCLDGWEFS QDVYLTIVT EWNLCVCEDDW KAPLTISLFF VGVLLGSFIS GQLSDRFGRK NVLFVTMGMQ
Isotype:	IgG
Cross-Reactivity:	Human, Mouse, Rat
Characteristics:	Polyclonal Antibodies

Target Details

Target:	SLC22A5
---------	---------

Target Details

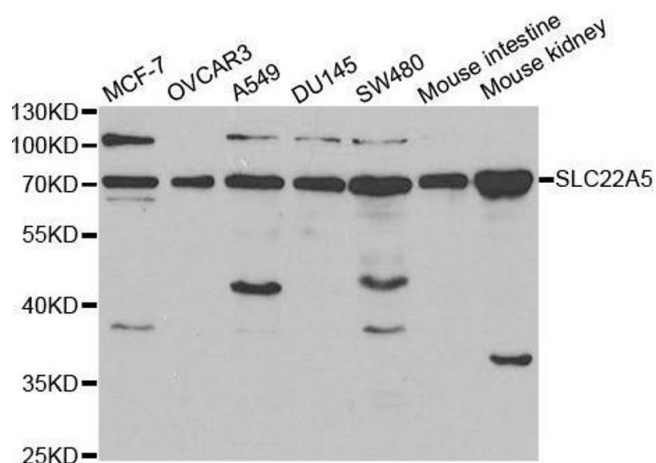
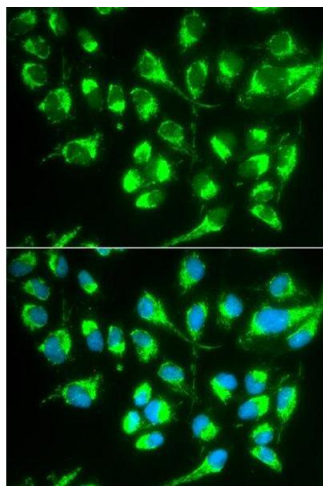
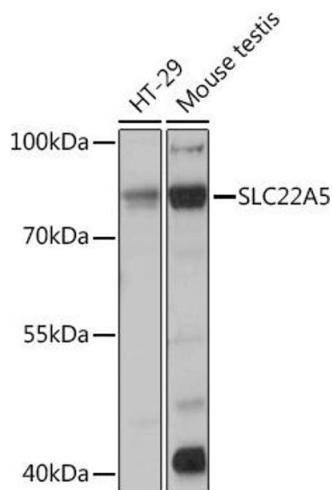
Alternative Name:	SLC22A5 (SLC22A5 Products)
Background:	<p>Polyspecific organic cation transporters in the liver, kidney, intestine, and other organs are critical for elimination of many endogenous small organic cations as well as a wide array of drugs and environmental toxins. The encoded protein is a plasma integral membrane protein which functions both as an organic cation transporter and as a sodium-dependent high affinity carnitine transporter. The encoded protein is involved in the active cellular uptake of carnitine. Mutations in this gene are the cause of systemic primary carnitine deficiency (CDSP), an autosomal recessive disorder manifested early in life by hypoketotic hypoglycemia and acute metabolic decompensation, and later in life by skeletal myopathy or cardiomyopathy.</p> <p>Alternative splicing of this gene results in multiple transcript variants.,SLC22A5,CDSP,OCTN2,Cancer,Signal Transduction,Endocrine & Metabolism,SLC22A5</p>
Molecular Weight:	24 kDa/62 kDa/65 kDa
Gene ID:	6584
UniProt:	O76082

Application Details

Application Notes:	WB,1:500 - 1:2000
Restrictions:	For Research Use only

Handling

Format:	Liquid
Buffer:	PBS with 0.02 % sodium azide,50 % glycerol, pH 7.3.
Preservative:	Sodium azide
Precaution of Use:	This product contains Sodium azide: a POISONOUS AND HAZARDOUS SUBSTANCE which should be handled by trained staff only.
Handling Advice:	Avoid freeze / thaw cycles
Storage:	-20 °C
Storage Comment:	Store at -20°C. Avoid freeze / thaw cycles.



Western Blotting

Image 1. Western blot analysis of extracts of various cell lines, using SLC22 Rabbit pAb (ABIN3022378, ABIN3022379, ABIN3022380, ABIN1513530 and ABIN6218770) at 1:1000 dilution. Secondary antibody: HRP Goat Anti-Rabbit IgG (H+L) (ABIN1684268 and ABIN3020597) at 1:10000 dilution. Lysates/proteins: 25 µg per lane. Blocking buffer: 3 % nonfat dry milk in TBST. Detection: ECL Basic Kit (RM00020). Exposure time: 3s.

Immunofluorescence

Image 2. Immunofluorescence analysis of MCF7 cell using SLC22A5 antibody. Blue: DAPI for nuclear staining.

Western Blotting

Image 3. Western blot analysis of extracts of various cell lines, using SLC22A5 antibody.