



[Go to Product page](#)

Datasheet for ABIN3022436
anti-IGFBP5 antibody (AA 21-272)

2 Images

Overview

Quantity:	100 µL
Target:	IGFBP5
Binding Specificity:	AA 21-272
Reactivity:	Human
Host:	Rabbit
Clonality:	Polyclonal
Conjugate:	This IGFBP5 antibody is un-conjugated
Application:	Western Blotting (WB)

Product Details

Immunogen:	Recombinant fusion protein containing a sequence corresponding to amino acids 21-272 of human IGFBP5 (NP_000590.1).
Sequence:	LGSFVHCEPC DEKALSMCPP SPLGCELVKE PGCGCCMTCA LAEGQSCGVY TERCAQGLRC LPRQDEEKPL HALLHGRGVC LNEKSYREQV KIERDSREHE EPTTSEMAEE TYSFKIFRPK HTRISELKAE AVKKDRRKKL TQSKFVGGAE NTAHPRIISA PEMRQESEQG PCRRHMEASL QELKASPRMV PRAVYLPNCD RKGIFYKRKQC KPSRGRKRG I CWCVDKYGMK LPGMEYVDGD FQCHTFDSSN VE
Isotype:	IgG
Cross-Reactivity:	Human, Mouse
Characteristics:	Polyclonal Antibodies
Purification:	Affinity purification

Target Details

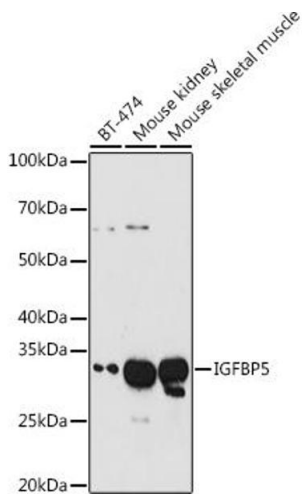
Target:	IGFBP5
Alternative Name:	IGFBP5 (IGFBP5 Products)
Background:	IGF-binding proteins prolong the half-life of the IGFs and have been shown to either inhibit or stimulate the growth promoting effects of the IGFs on cell culture. They alter the interaction of IGFs with their cell surface receptors.,IGFBP5,IBP5,Signal Transduction,Cell Biology & Developmental Biology,Growth factor,IGFBP5
Molecular Weight:	30 kDa
Gene ID:	3488
UniProt:	P24593
Pathways:	WNT Signaling , Carbohydrate Homeostasis , Myometrial Relaxation and Contraction , Regulation of Carbohydrate Metabolic Process , Autophagy , Smooth Muscle Cell Migration , Growth Factor Binding

Application Details

Application Notes:	WB,1:500 - 1:2000
Restrictions:	For Research Use only

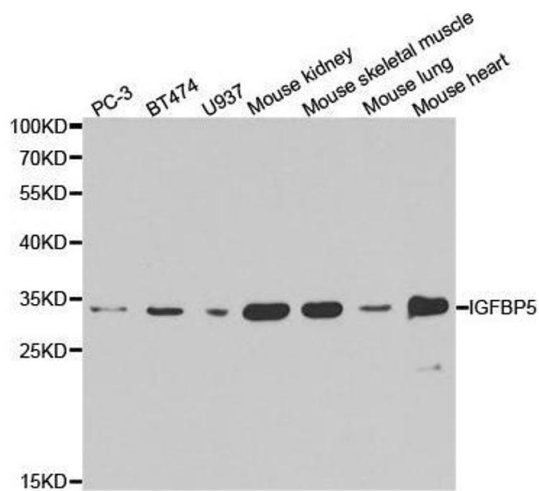
Handling

Format:	Liquid
Buffer:	PBS with 0.02 % sodium azide,50 % glycerol, pH 7.3.
Preservative:	Sodium azide
Precaution of Use:	This product contains Sodium azide: a POISONOUS AND HAZARDOUS SUBSTANCE which should be handled by trained staff only.
Handling Advice:	Avoid freeze / thaw cycles
Storage:	-20 °C
Storage Comment:	Store at -20°C. Avoid freeze / thaw cycles.



Western Blotting

Image 1. Western blot analysis of extracts of various cell lines, using IGFBP5 antibody (ABIN3022435, ABIN3022436, ABIN3022437 and ABIN6218818) at 1:1000 dilution. Secondary antibody: HRP Goat Anti-Rabbit IgG (H+L) (ABIN1684268 and ABIN3020597) at 1:10000 dilution. Lysates/proteins: 25 µg per lane. Blocking buffer: 3 % nonfat dry milk in TBST. Detection: ECL Basic Kit (RM00020). Exposure time: 180s.



Western Blotting

Image 2. Western blot analysis of extracts of various cell lines, using IGFBP5 antibody.