

Datasheet for ABIN3022445  
**anti-CHI3L1 antibody (AA 22-240)**



[Go to Product page](#)

7 Images

Overview

Quantity:	100 µL
Target:	CHI3L1
Binding Specificity:	AA 22-240
Reactivity:	Human
Host:	Rabbit
Clonality:	Polyclonal
Conjugate:	This CHI3L1 antibody is un-conjugated
Application:	Western Blotting (WB), Immunohistochemistry (IHC), Immunofluorescence (IF)

Product Details

Immunogen:	Recombinant fusion protein containing a sequence corresponding to amino acids 22-240 of human YKL-40/CHI3L1 (NP_001267.2).
Sequence:	YKLVCYYTSW SQYREGDGSC FPDALDRFLC THIIYSFANI SNDHIDTWEW NDVTLYGMLN TLKNRNPNLK TLLSVGGWNF GSQRFSKIAS NTQSRRTFIK SVPPFLRTHG FDGLDLAWLY PGRRDQHFHT TLIKEMKAEF IKEAQPGKKQ LLLSAALSAG KVTIDSSYDI AKISQHLDFI SIMTYDFHGA WRGTTGHHSP LFRGQEDASP DRFSNTDYA
Isotype:	IgG
Cross-Reactivity:	Human, Mouse, Rat
Characteristics:	Polyclonal Antibodies
Purification:	Affinity purification

## Target Details

---

Target:	CHI3L1
Alternative Name:	CHI3L1 ( <a href="#">CHI3L1 Products</a> )
Target Type:	Viral Protein
Background:	Chitinases catalyze the hydrolysis of chitin, which is an abundant glycopolymer found in insect exoskeletons and fungal cell walls. The glycoside hydrolase 18 family of chitinases includes eight human family members. This gene encodes a glycoprotein member of the glycosyl hydrolase 18 family. The protein lacks chitinase activity and is secreted by activated macrophages, chondrocytes, neutrophils and synovial cells. The protein is thought to play a role in the process of inflammation and tissue remodeling.,CHI3L1,ASRT7,CGP-39,GP-39,GP39,HC-gp39,HCGP-3P,YKL-40,YKL40,YYL-40,hCGP-39,Signal Transduction,Cell Biology & Developmental Biology,Cytoskeleton,Extracellular Matrix,CHI3L1
Molecular Weight:	42 kDa
Gene ID:	1116
UniProt:	<a href="#">P36222</a>

## Application Details

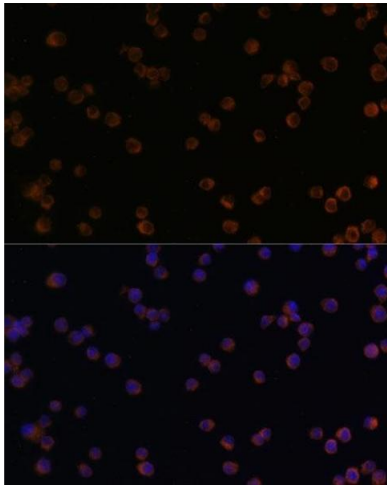
---

Application Notes:	WB,1:500 - 1:2000,IHC,1:50 - 1:200,IF,1:50 - 1:200
Restrictions:	For Research Use only

## Handling

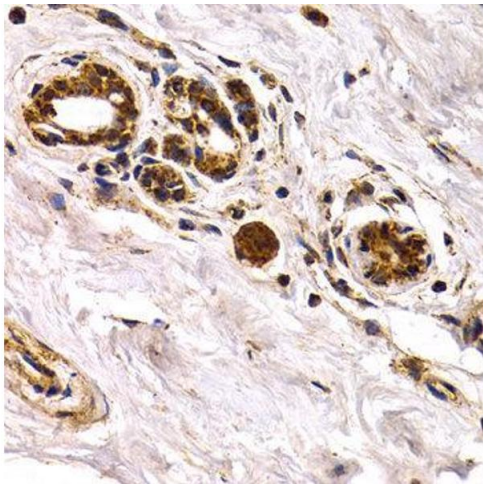
---

Format:	Liquid
Buffer:	PBS with 0.02 % sodium azide,50 % glycerol, pH 7.3.
Preservative:	Sodium azide
Precaution of Use:	This product contains Sodium azide: a POISONOUS AND HAZARDOUS SUBSTANCE which should be handled by trained staff only.
Handling Advice:	Avoid freeze / thaw cycles
Storage:	-20 °C
Storage Comment:	Store at -20°C. Avoid freeze / thaw cycles.



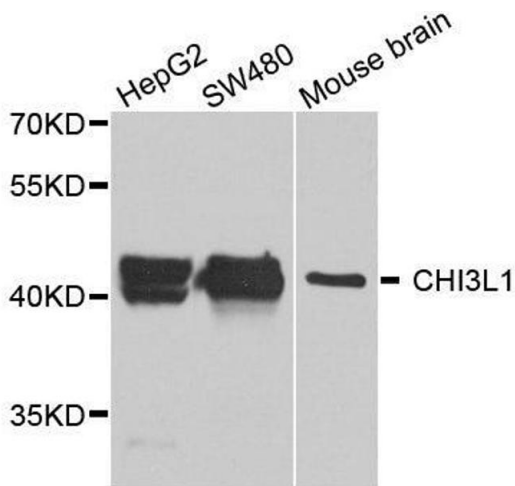
### Immunofluorescence

**Image 1.** Immunofluorescence analysis of Raw264.7 cells using YKL-40/CHI3L1 antibody (ABIN3022444, ABIN3022445, ABIN3022446 and ABIN6218823) at dilution of 1:100. Blue: DAPI for nuclear staining.



### Immunohistochemistry

**Image 2.**



### Western Blotting

**Image 3.** Western blot analysis of extracts of THP1 cell lines, using CHI3L1 antibody.

Please check the [product details page](#) for more images. Overall 7 images are available for ABIN3022445.