

Datasheet for ABIN3022478
anti-PTH1R antibody (AA 464-593)[Go to Product page](#)

2 Images

Overview

Quantity:	100 µL
Target:	PTH1R
Binding Specificity:	AA 464-593
Reactivity:	Human
Host:	Rabbit
Clonality:	Polyclonal
Conjugate:	This PTH1R antibody is un-conjugated
Application:	Western Blotting (WB), Immunohistochemistry (IHC)

Product Details

Immunogen:	Recombinant fusion protein containing a sequence corresponding to amino acids 464-593 of human PTH1R (NP_000307.1).
Sequence:	GEVQAEIKKS WSRWTLALDF KRKARSGSSS YSYGPMVSHT SVTNVGPRVG LGLPLSPRL PTATTNGHPQ LPGHAKPGTP ALETLETPP AMAAPKDDGF LNGSCSGLDE EASGPERPPA LLQEEWETVM
Isotype:	IgG
Cross-Reactivity:	Human, Mouse, Rat
Characteristics:	Polyclonal Antibodies

Target Details

Target:	PTH1R
---------	-------

Target Details

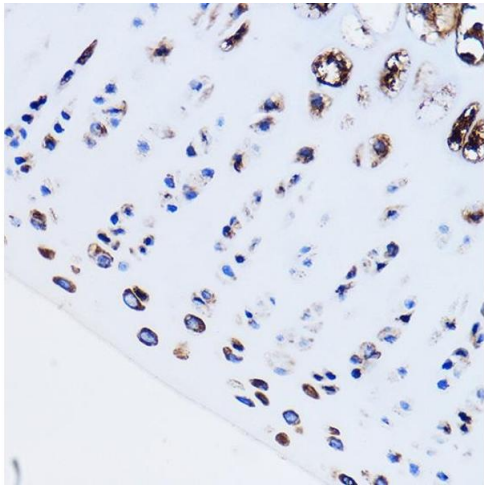
Alternative Name:	PTH1R (PTH1R Products)
Background:	The protein encoded by this gene is a member of the G-protein coupled receptor family 2. This protein is a receptor for parathyroid hormone (PTH) and for parathyroid hormone-like hormone (PTHrP). The activity of this receptor is mediated by G proteins which activate adenylyl cyclase and also a phosphatidylinositol-calcium second messenger system. Defects in this receptor are known to be the cause of Jansen's metaphyseal chondrodysplasia (JMC), chondrodysplasia Blomstrand type (BOCD), as well as enchondromatosis. Two transcript variants encoding the same protein have been found for this gene.,PTH1R,PFE,PTHR,PTHR1,Signal Transduction,Cell Biology & Developmental Biology,Growth factor,Endocrine & Metabolism,Neuroscience,PTH1R
Molecular Weight:	66 kDa
Gene ID:	5745
UniProt:	Q03431
Pathways:	Regulation of Carbohydrate Metabolic Process

Application Details

Application Notes:	WB,1:500 - 1:2000,IHC,1:50 - 1:200
Restrictions:	For Research Use only

Handling

Format:	Liquid
Buffer:	PBS with 0.02 % sodium azide,50 % glycerol, pH 7.3.
Preservative:	Sodium azide
Precaution of Use:	This product contains Sodium azide: a POISONOUS AND HAZARDOUS SUBSTANCE which should be handled by trained staff only.
Handling Advice:	Avoid freeze / thaw cycles
Storage:	-20 °C
Storage Comment:	Store at -20°C. Avoid freeze / thaw cycles.



Immunohistochemistry

Image 1. Immunohistochemistry of paraffin-embedded Rat leg bone using PTH1R Rabbit pAb (ABIN3022477, ABIN3022478, ABIN3022479, ABIN1513445 and ABIN6218844) at dilution of 1:100 (40x lens). Perform microwave antigen retrieval with 10 mM PBS buffer pH 7.2 before commencing with IHC staining protocol.

Western Blotting

Image 2. Western blot analysis of extracts of various cell lines, using PTH1R antibody.

