



[Go to Product page](#)

Datasheet for ABIN3022518
anti-PSMB9 antibody (AA 1-219)

5 Images

Overview

Quantity:	100 µL
Target:	PSMB9
Binding Specificity:	AA 1-219
Reactivity:	Human
Host:	Rabbit
Clonality:	Polyclonal
Conjugate:	This PSMB9 antibody is un-conjugated
Application:	Western Blotting (WB), Immunofluorescence (IF)

Product Details

Immunogen:	Recombinant fusion protein containing a sequence corresponding to amino acids 1-219 of human PSMB9/LMP2 (NP_002791.1).
Sequence:	MLRAGAPTGD LPRAGEVHTG TTIMAVEFDG GVVMGSDSRV SAGEAVVNRV FDKLSPLHER IYCALSGSAA DAQAVADMAA YQLELHGIEL EEPPLVLAAA NVVRNISYKY REDLSAHLMV AGWDQREGGQ VYGTLGGMLT RQPFAIGGSG STFIYGYVDA AYKPGMSPEE CRRFTTDAIA LAMSRDGSSG GVIYLVITITA AGVDHRVILG NELPKFYDE
Isotype:	IgG
Cross-Reactivity:	Human, Mouse
Characteristics:	Polyclonal Antibodies

Target Details

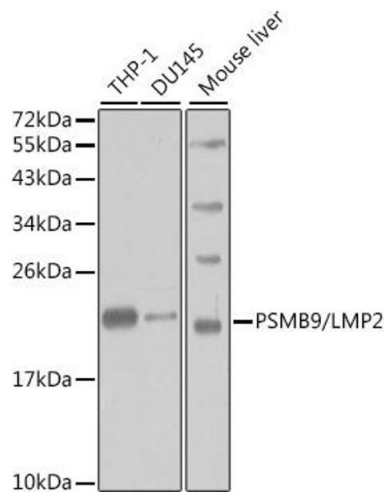
Target:	PSMB9
Alternative Name:	PSMB9 (PSMB9 Products)
Background:	<p>The proteasome is a multicatalytic proteinase complex with a highly ordered ring-shaped 20S core structure. The core structure is composed of 4 rings of 28 non-identical subunits, 2 rings are composed of 7 alpha subunits and 2 rings are composed of 7 beta subunits. Proteasomes are distributed throughout eukaryotic cells at a high concentration and cleave peptides in an ATP/ubiquitin-dependent process in a non-lysosomal pathway. An essential function of a modified proteasome, the immunoproteasome, is the processing of class I MHC peptides. This gene encodes a member of the proteasome B-type family, also known as the T1B family, that is a 20S core beta subunit. This gene is located in the class II region of the MHC (major histocompatibility complex). Expression of this gene is induced by gamma interferon and this gene product replaces catalytic subunit 1 (proteasome beta 6 subunit) in the immunoproteasome. Proteolytic processing is required to generate a mature subunit.,PSMB9,LMP2,PSMB6i,RING12,beta1i,Cell Biology & Developmental Biology,Ubiquitin,PSMB9</p>
Molecular Weight:	22 kDa/23 kDa
Gene ID:	5698
UniProt:	P28065
Pathways:	Mitotic G1-G1/S Phases , DNA Replication , Synthesis of DNA

Application Details

Application Notes:	WB,1:500 - 1:2000,IF,1:10 - 1:100
Restrictions:	For Research Use only

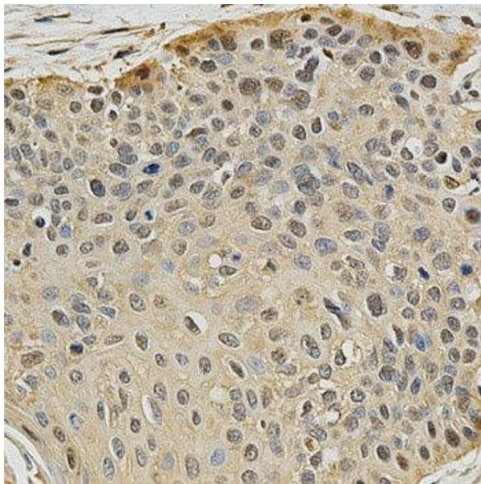
Handling

Buffer:	PBS with 0.02 % sodium azide,50 % glycerol, pH 7.3.
Preservative:	Sodium azide
Precaution of Use:	This product contains Sodium azide: a POISONOUS AND HAZARDOUS SUBSTANCE which should be handled by trained staff only.
Storage:	-20 °C
Storage Comment:	Store at -20°C. Avoid freeze / thaw cycles.



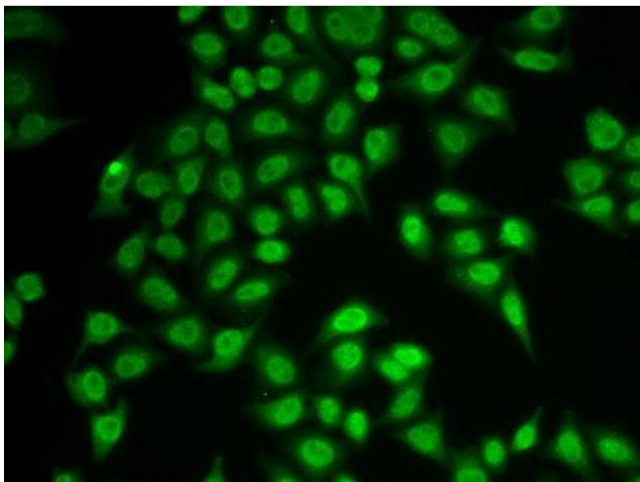
Western Blotting

Image 1. Western blot analysis of extracts of various cell lines, using PSMB9/LMP2 antibody (ABIN3022517, ABIN3022518, ABIN3022519 and ABIN6218874) at 1:1000 dilution. Secondary antibody: HRP Goat Anti-Rabbit IgG (H+L) (ABIN1684268 and ABIN3020597) at 1:10000 dilution. Lysates/proteins: 25 µg per lane. Blocking buffer: 3 % nonfat dry milk in TBST. Detection: ECL Basic Kit (RM00020).



Immunohistochemistry

Image 2.



Immunofluorescence

Image 3. Immunofluorescence analysis of MCF-7 cell using PSMB9 antibody.

Please check the [product details page](#) for more images. Overall 5 images are available for ABIN3022518.