

Datasheet for ABIN3022527
anti-GGT1 antibody (AA 370-569)



[Go to Product page](#)

5 Images

Overview

Quantity:	100 µL
Target:	GGT1
Binding Specificity:	AA 370-569
Reactivity:	Human
Host:	Rabbit
Clonality:	Polyclonal
Conjugate:	This GGT1 antibody is un-conjugated
Application:	Western Blotting (WB), Immunohistochemistry (IHC)

Product Details

Immunogen:	Recombinant fusion protein containing a sequence corresponding to amino acids 370-569 of human GGT1 (NP_001027537.1).
Sequence:	KPEFYTPDDG GTAHLSVVAE DGS AVSATST INLYFGSKVR SPVSGILFNN EMDDFSSPSI TNEFGVPPSP ANFIQPGKQP LSSMCPTIMV GQDGQVRMVV GAAGGTQITT ATALAIYNL WFGYDVKRAV EEPRLHNQLL PNVTTVERNI DQAVTAALET RHHHTQIAST FIAVVQAIVR TAGGWAAASD SRKGGEPAGY
Isotype:	IgG
Cross-Reactivity:	Human, Mouse, Rat
Characteristics:	Polyclonal Antibodies
Purification:	Affinity purification

Target Details

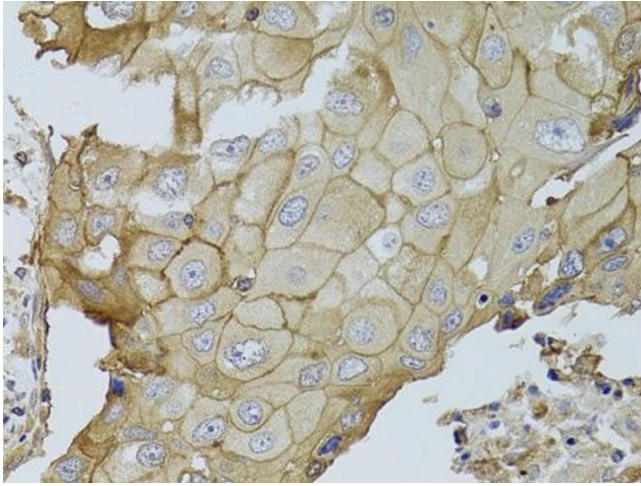
Target:	GGT1
Alternative Name:	GGT1 (GGT1 Products)
Background:	The enzyme encoded by this gene is a type I gamma-glutamyltransferase that catalyzes the transfer of the glutamyl moiety of glutathione to a variety of amino acids and dipeptide acceptors. The enzyme is composed of a heavy chain and a light chain, which are derived from a single precursor protein. It is expressed in tissues involved in absorption and secretion and may contribute to the etiology of diabetes and other metabolic disorders. Multiple alternatively spliced variants have been identified. There are a number of related genes present on chromosomes 20 and 22, and putative pseudogenes for this gene on chromosomes 2, 13, and 22.,GGT1,CD224,D22S672,D22S732,GGT,GGT 1,GTG,Signal Transduction,Endocrine & Metabolism,Amino acid metabolism,Immunology & Inflammation,CD markers,GGT1
Molecular Weight:	24 kDa/39 kDa/61 kDa
Gene ID:	2678
UniProt:	P19440

Application Details

Application Notes:	WB,1:500 - 1:2000,IHC,1:50 - 1:200
Restrictions:	For Research Use only

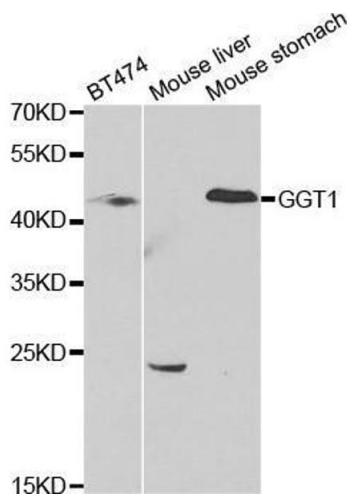
Handling

Format:	Liquid
Buffer:	PBS with 0.02 % sodium azide,50 % glycerol, pH 7.3.
Preservative:	Sodium azide
Precaution of Use:	This product contains Sodium azide: a POISONOUS AND HAZARDOUS SUBSTANCE which should be handled by trained staff only.
Handling Advice:	Avoid freeze / thaw cycles
Storage:	-20 °C
Storage Comment:	Store at -20°C. Avoid freeze / thaw cycles.



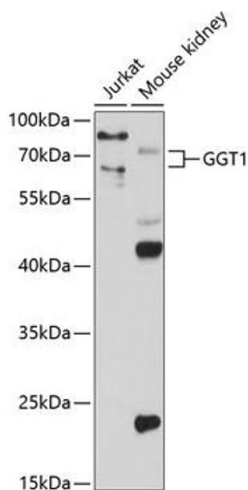
Immunohistochemistry

Image 1. Immunohistochemistry of paraffin-embedded human breast cancer using GGT1 antibody (ABIN3022526, ABIN3022527, ABIN3022528 and ABIN6218881) at dilution of 1:100 (40x lens). Perform microwave antigen retrieval with 10 mM PBS buffer pH 7.2 before commencing with IHC staining protocol.



Western Blotting

Image 2. Western blot analysis of extracts of various cell lines, using GGT1 antibody.



Western Blotting

Image 3. Western blot analysis of extracts of various cell lines, using GGT1 antibody (ABIN3022526, ABIN3022527, ABIN3022528 and ABIN6218881) at 1:1000 dilution. Secondary antibody: HRP Goat Anti-Rabbit IgG (H+L) (ABIN1684268 and ABIN3020597) at 1:10000 dilution. Lysates/proteins: 25 µg per lane. Blocking buffer: 3 % nonfat dry milk in TBST. Detection: ECL Enhanced Kit (RM00021). Exposure time: 90s.

Please check the [product details page](#) for more images. Overall 5 images are available for ABIN3022527.