

Datasheet for ABIN3022558  
**anti-DCK antibody (AA 1-260)**[Go to Product page](#)

## 5 Images

## Overview

Quantity:	100 µL
Target:	DCK
Binding Specificity:	AA 1-260
Reactivity:	Human
Host:	Rabbit
Clonality:	Polyclonal
Conjugate:	This DCK antibody is un-conjugated
Application:	Western Blotting (WB), Immunohistochemistry (IHC), Immunofluorescence (IF)

## Product Details

Immunogen:	Recombinant fusion protein containing a sequence corresponding to amino acids 1-260 of human DCK (NP_000779.1).
Sequence:	MATPPKRSCP SFSASSEGTR IKKISIEGNI AAGKSTFVNI LKQLCEDWEV VPEPVARWCN VQSTQDEFEE LTMSQKNGGN VLQMMYEKPE RWSFTFQTYA CLSRIRAQLA SLNGKCLKDAE KPVLEFFERSV YSDRYIFASN LYESECMNET EWTIYQDWHD WMNNQFGQSL ELDGIIYLQA TPETCLHRIY LRGRNEEQGI PLEYLEKLHY KHESWLLHRT LKTNFDYLQE VPILTLDVNE DFKDKYESLV EKVKEFLSTL
Isotype:	IgG
Cross-Reactivity:	Human, Mouse, Rat
Characteristics:	Polyclonal Antibodies
Purification:	Affinity purification

## Target Details

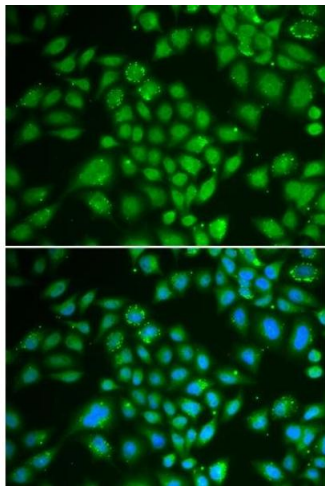
Target:	DCK
Alternative Name:	DCK ( <a href="#">DCK Products</a> )
Background:	Deoxycytidine kinase (DCK) is required for the phosphorylation of several deoxyribonucleosides and their nucleoside analogs. Deficiency of DCK is associated with resistance to antiviral and anticancer chemotherapeutic agents. Conversely, increased deoxycytidine kinase activity is associated with increased activation of these compounds to cytotoxic nucleoside triphosphate derivatives. DCK is clinically important because of its relationship to drug resistance and sensitivity.,DCK,Cancer,Signal Transduction,Kinase,Cell Biology & Developmental Biology,Cell Cycle,DCK
Molecular Weight:	30 kDa
Gene ID:	1633
UniProt:	<a href="#">P27707</a>

## Application Details

Application Notes:	WB,1:500 - 1:2000,IHC,1:50 - 1:200,IF,1:50 - 1:200
Restrictions:	For Research Use only

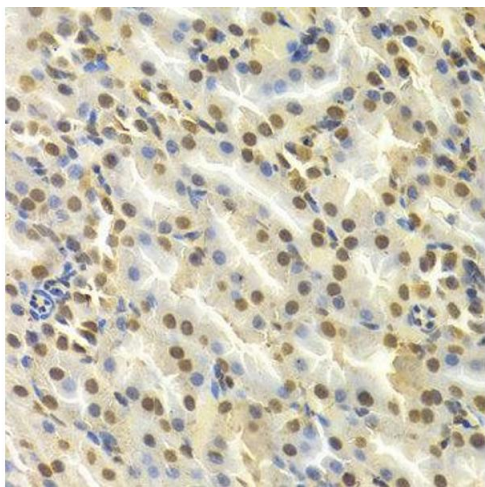
## Handling

Format:	Liquid
Buffer:	PBS with 0.02 % sodium azide,50 % glycerol, pH 7.3.
Preservative:	Sodium azide
Precaution of Use:	This product contains Sodium azide: a POISONOUS AND HAZARDOUS SUBSTANCE which should be handled by trained staff only.
Handling Advice:	Avoid freeze / thaw cycles
Storage:	-20 °C
Storage Comment:	Store at -20°C. Avoid freeze / thaw cycles.



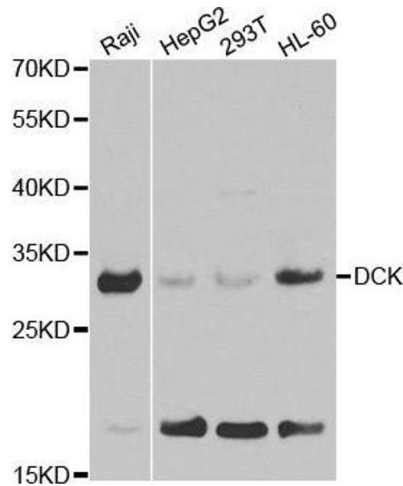
Immunofluorescence

**Image 1.** Immunofluorescence analysis of HeLa cells using DCK antibody (ABIN3022557, ABIN3022558, ABIN3022559 and ABIN6218902). Blue: DAPI for nuclear staining.



Immunohistochemistry

**Image 2.**



Western Blotting

**Image 3.** Western blot analysis of extracts of various cell lines, using DCK antibody.

Please check the [product details page](#) for more images. Overall 5 images are available for ABIN3022558.