

Datasheet for ABIN3022573

anti-ALDH1A1 antibody (AA 48-147)

11 Images

3 Publications



[Go to Product page](#)

Overview

Quantity:	100 µL
Target:	ALDH1A1
Binding Specificity:	AA 48-147
Reactivity:	Human
Host:	Rabbit
Clonality:	Polyclonal
Conjugate:	This ALDH1A1 antibody is un-conjugated
Application:	Western Blotting (WB), Immunohistochemistry (IHC), Immunofluorescence (IF)

Product Details

Immunogen:	Recombinant fusion protein containing a sequence corresponding to amino acids 48-147 of human ALDH1A1 (NP_000680.2).
Sequence:	ELCQVEEGDK EDVDKAVKAA RQAFQIGSPW RTMDASERGR LLYKLADLIE RDRLLLATME SMNGGKLYSN AYLNDLAGCI KTLRYCAGWA DKIQGRTIPI
Isotype:	IgG
Cross-Reactivity:	Human, Mouse, Rat
Characteristics:	Polyclonal Antibodies
Purification:	Affinity purification

Target Details

Target:	ALDH1A1
Alternative Name:	ALDH1A1 (ALDH1A1 Products)
Background:	<p>The protein encoded by this gene belongs to the aldehyde dehydrogenase family. Aldehyde dehydrogenase is the next enzyme after alcohol dehydrogenase in the major pathway of alcohol metabolism. There are two major aldehyde dehydrogenase isozymes in the liver, cytosolic and mitochondrial, which are encoded by distinct genes, and can be distinguished by their electrophoretic mobility, kinetic properties, and subcellular localization. This gene encodes the cytosolic isozyme. Studies in mice show that through its role in retinol metabolism, this gene may also be involved in the regulation of the metabolic responses to high-fat diet.,ALDH1A1,ALDC,ALDH-E1,ALDH1,ALDH11,HEL-9,HEL-S-53e,HEL12,PUMB1,RALDH1,Cancer,Tumor biomarkers,Neuroscience,Cell Type Marker,Neurodegenerative Diseases,Dopamine Signaling in Parkinson's Disease,Stem Cells,Hematopoietic Progenitors,Neuron marker,ALDH1A1</p>
Molecular Weight:	54 kDa
Gene ID:	216
UniProt:	P00352
Pathways:	Dopaminergic Neurogenesis

Application Details

Application Notes:	WB,1:500 - 1:2000,IHC,1:50 - 1:200,IF,1:50 - 1:200
Restrictions:	For Research Use only

Handling

Format:	Liquid
Buffer:	PBS with 0.02 % sodium azide,50 % glycerol, pH 7.3.
Preservative:	Sodium azide
Precaution of Use:	This product contains Sodium azide: a POISONOUS AND HAZARDOUS SUBSTANCE which should be handled by trained staff only.
Handling Advice:	Avoid freeze / thaw cycles
Storage:	-20 °C

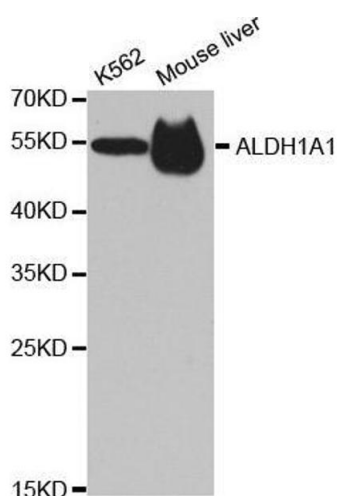
Handling

Storage Comment: Store at -20°C. Avoid freeze / thaw cycles.

Publications

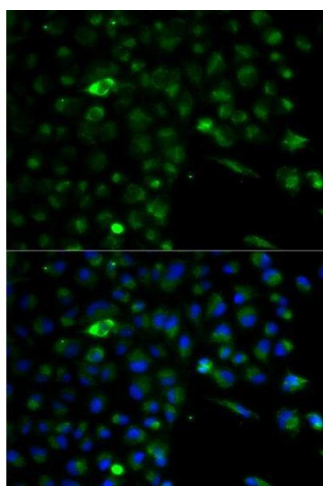
Product cited in: Xue, Zhang, Wang, Zhang, Xiang, Wang, Wang, Li, Zhang, Zou, Wang, Wu, Lu, Chen, Ding, Li, Xu: "Benzoxazinone-containing 3,5-dimethylisoxazole derivatives as BET bromodomain inhibitors for treatment of castration-resistant prostate cancer." in: **European journal of medicinal chemistry**, Vol. 152, pp. 542-559, (2018) ([PubMed](#)).

Images



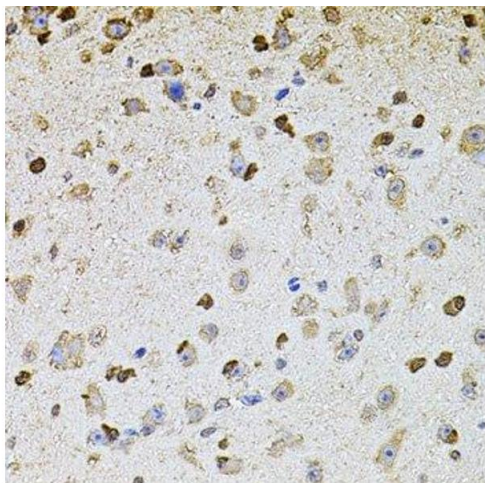
Western Blotting

Image 1. Western blot analysis of extracts of various cell lines, using ALDH1A1 antibody.



Immunofluorescence

Image 2. Immunofluorescence analysis of A549 cell using ALDH1A1 antibody. Blue: DAPI for nuclear staining.



Immunohistochemistry (Paraffin-embedded Sections)

Image 3. Immunohistochemistry of paraffin-embedded mouse brain using ALDH1A1 antibody.

Please check the [product details page](#) for more images. Overall 11 images are available for ABIN3022573.