

Datasheet for ABIN3022687
anti-MCM6 antibody (AA 562-821)[Go to Product page](#)

7 Images

Overview

Quantity:	100 µL
Target:	MCM6
Binding Specificity:	AA 562-821
Reactivity:	Human
Host:	Rabbit
Clonality:	Polyclonal
Conjugate:	This MCM6 antibody is un-conjugated
Application:	Western Blotting (WB), Immunofluorescence (IF), Immunoprecipitation (IP)

Product Details

Immunogen:	Recombinant fusion protein containing a sequence corresponding to amino acids 562-821 of human MCM6 (NP_005906.2).
Sequence:	SIDRVYSLDD IRRYLLFARQ FKPKISKESE DFIVEQYKHL RQRDGSQVTK SSWRITVRQL ESMIRLSEAM ARMHCCDEVQ PKHVKEAFRL LNKSIIRVET PDVNLQEEEE IQMEVDEGAG GINGHADSPA PVNGINGYNE DINQESAPKA SLRLGFSEYC RISNLIVLHL RKVEEEEDES ALKRSELVNW YLKEIESEID SEEELINKKR IIEKVIHRLT HYDHVLIET QAGLKGSTEG SESYEEDPYL VVNPNYLLED
Isotype:	IgG
Cross-Reactivity:	Human, Mouse, Rat
Characteristics:	Polyclonal Antibodies

Target Details

Target:	MCM6
Alternative Name:	MCM6 (MCM6 Products)
Background:	<p>The protein encoded by this gene is one of the highly conserved mini-chromosome maintenance proteins (MCM) that are essential for the initiation of eukaryotic genome replication. The hexameric protein complex formed by the MCM proteins is a key component of the pre-replication complex (pre_RC) and may be involved in the formation of replication forks and in the recruitment of other DNA replication related proteins. The MCM complex consisting of this protein and MCM2, 4 and 7 proteins possesses DNA helicase activity, and may act as a DNA unwinding enzyme. The phosphorylation of the complex by CDC2 kinase reduces the helicase activity, suggesting a role in the regulation of DNA replication. Single nucleotide polymorphisms in the intron regions of this gene are associated with differential transcriptional activation of the promoter of the neighboring lactase gene and, thereby, influence lactose intolerance in early adulthood.,MCM6,MCG40308,Mis5,P105MCM,Epigenetics & Nuclear Signaling,MCM6</p>
Molecular Weight:	92 kDa
Gene ID:	4175
UniProt:	Q14566
Pathways:	DNA Damage Repair , Mitotic G1-G1/S Phases , DNA Replication , Synthesis of DNA

Application Details

Application Notes:	WB,1:500 - 1:2000,IF,1:50 - 1:200,IP,1:50 - 1:200
Restrictions:	For Research Use only

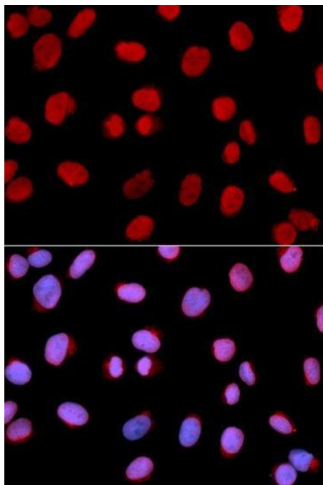
Handling

Format:	Liquid
Buffer:	PBS with 0.02 % sodium azide,50 % glycerol, pH 7.3.
Preservative:	Sodium azide
Precaution of Use:	This product contains Sodium azide: a POISONOUS AND HAZARDOUS SUBSTANCE which should be handled by trained staff only.
Handling Advice:	Avoid freeze / thaw cycles
Storage:	-20 °C

Handling

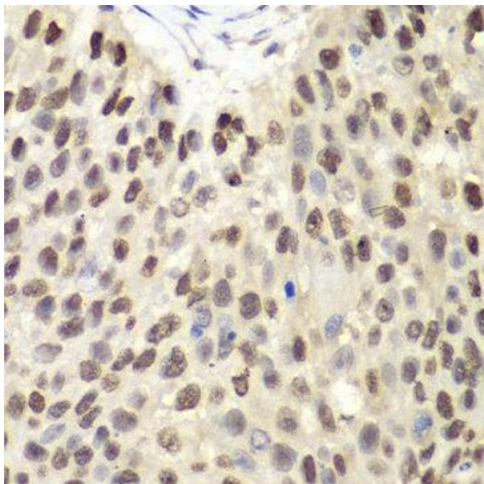
Storage Comment: Store at -20°C. Avoid freeze / thaw cycles.

Images



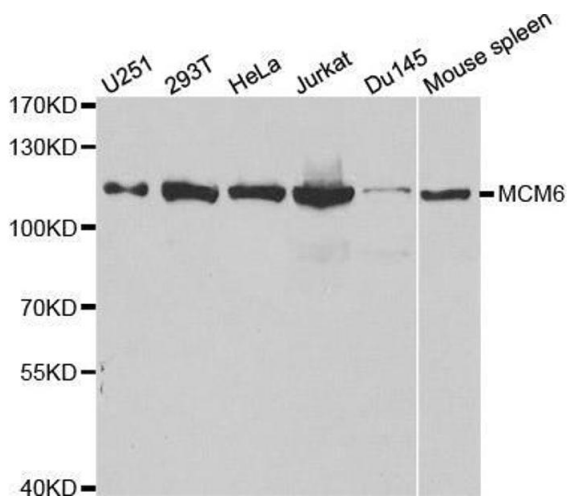
Immunofluorescence

Image 1.



Immunohistochemistry

Image 2.



Western Blotting

Image 3. Western blot analysis of extracts of various cell lines, using MCM6 antibody.

Please check the [product details page](#) for more images. Overall 7 images are available for ABIN3022687.