

Datasheet for ABIN3022693  
**anti-SMARCC2 antibody (AA 150-250)**[Go to Product page](#)

## 4 Images

## Overview

Quantity:	100 µL
Target:	SMARCC2
Binding Specificity:	AA 150-250
Reactivity:	Human
Host:	Rabbit
Clonality:	Polyclonal
Conjugate:	This SMARCC2 antibody is un-conjugated
Application:	Western Blotting (WB)

## Product Details

Immunogen:	A synthetic peptide corresponding to a sequence within amino acids 150-250 of human SMARCC2 (NP_620706.1).
Sequence:	PKLLGKLKDI IKRHQGTVTE DKNNASHVVY PVPGNLEEEE WVRPVMKRDK QVLLHWGYYP DSYDTWIPAS EIEASVEDAP TPEKPRKVHA KWILDTDTFN E
Isotype:	IgG
Cross-Reactivity:	Human, Mouse, Rat
Characteristics:	Polyclonal Antibodies

## Target Details

Target:	SMARCC2
---------	---------

## Target Details

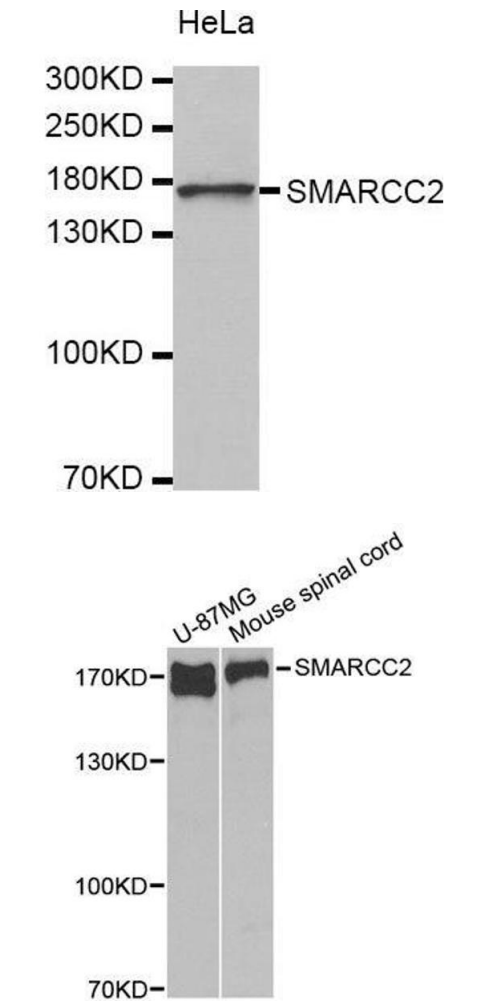
Alternative Name:	SMARCC2 ( <a href="#">SMARCC2 Products</a> )
Background:	The protein encoded by this gene is a member of the SWI/SNF family of proteins, whose members display helicase and ATPase activities and which are thought to regulate transcription of certain genes by altering the chromatin structure around those genes. The encoded protein is part of the large ATP-dependent chromatin remodeling complex SNF/SWI and contains a predicted leucine zipper motif typical of many transcription factors. Alternatively spliced transcript variants encoding different isoforms have been found for this gene.,SMARCC2,BAF170,CRACC2,Rsc8,Epigenetics & Nuclear Signaling,Chromatin Remodeling,SMARCC2
Molecular Weight:	124 kDa/126 kDa/132 kDa
Gene ID:	6601
UniProt:	<a href="#">Q8TAQ2</a>

## Application Details

Application Notes:	WB,1:200 - 1:2000
Restrictions:	For Research Use only

## Handling

Buffer:	PBS with 0.02 % sodium azide,50 % glycerol, pH 7.3.
Preservative:	Sodium azide
Precaution of Use:	This product contains Sodium azide: a POISONOUS AND HAZARDOUS SUBSTANCE which should be handled by trained staff only.
Storage:	-20 °C
Storage Comment:	Store at -20°C. Avoid freeze / thaw cycles.

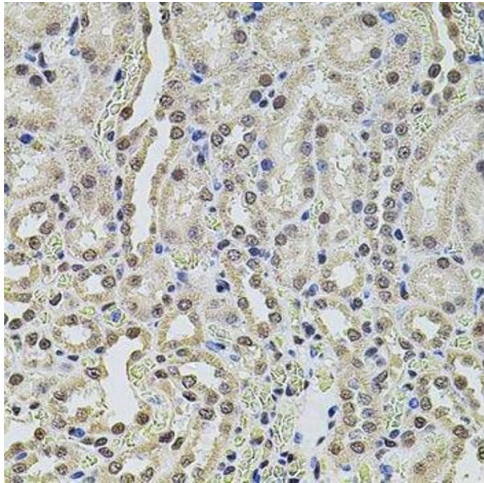


Western Blotting

Image 1.

Western Blotting

Image 2. Western blot analysis of extracts of various cell lines, using SMARCC2 antibody.



Immunohistochemistry (Paraffin-embedded Sections)

Image 3. Immunohistochemistry of paraffin-embedded rat kidney using SMARCC2 antibody.

Please check the [product details page](#) for more images. Overall 4 images are available for ABIN3022693.