

Datasheet for ABIN3022699

**anti-Phospholipase C beta 1 antibody (AA 917-1216)**[Go to Product page](#)

## 3 Images

## Overview

Quantity:	100 µL
Target:	Phospholipase C beta 1 (PLCB1)
Binding Specificity:	AA 917-1216
Reactivity:	Human
Host:	Rabbit
Clonality:	Polyclonal
Conjugate:	This Phospholipase C beta 1 antibody is un-conjugated
Application:	Western Blotting (WB), Immunohistochemistry (IHC)

## Product Details

Immunogen:	Recombinant fusion protein containing a sequence corresponding to amino acids 917-1216 of human PLCB1 (NP_056007.1).
Sequence:	KSFVKLQKKH YKEMKDLVKR HHKKTDLIK EHTTKYNEIQ NDYLRRRAAL EKSAKKDSKK KSEPSSPDHG SSTIEQDLAA LDAEMTQKLI DLKDKQQQL LNLRQEYYS EKYQKREHIK LLIQKLTDVA EECQNNQLKK LKEICEKEKK ELKKKMDKKR QEKITEAKSK DKSQMEEEEK EMIRSYIQEV VQYIKRLEEA QSKRQEKLVE KHKEIRQQIL DEKPKLQVEL EQEYQDKFKR LPLEILEFVQ EAMKGGKISED SNHGSAPLSL SSDPGKVNHK TPSSEELGGD IPGKEFDTPL
Isotype:	IgG
Cross-Reactivity:	Human, Mouse, Rat
Characteristics:	Polyclonal Antibodies

## Target Details

---

Target:	Phospholipase C beta 1 (PLCB1)
Alternative Name:	PLCB1 ( <a href="#">PLCB1 Products</a> )
Background:	<p>The protein encoded by this gene catalyzes the formation of inositol 1,4,5-trisphosphate and diacylglycerol from phosphatidylinositol 4,5-bisphosphate. This reaction uses calcium as a cofactor and plays an important role in the intracellular transduction of many extracellular signals. This gene is activated by two G-protein alpha subunits, alpha-q and alpha-11. Two transcript variants encoding different isoforms have been found for this gene.,PLCB1,EIEE12,PI-PLC,PLC-154,PLC-I,PLC-beta-1,PLC154,PLCB1A,PLCB1B,Signal Transduction,G protein signaling,G2/M DNA Damage Checkpoint,Cell Biology &amp; Developmental Biology,Cytoskeleton,Actins,Endocrine &amp; Metabolism,Lipid Metabolism,AMPK Signaling Pathway,Neuroscience,Neurodegenerative Diseases,PLCB1</p>
Molecular Weight:	133 kDa/138 kDa
Gene ID:	23236
UniProt:	<a href="#">Q9NQ66</a>
Pathways:	<a href="#">WNT Signaling</a> , <a href="#">AMPK Signaling</a> , <a href="#">Thyroid Hormone Synthesis</a> , <a href="#">Inositol Metabolic Process</a> , <a href="#">Regulation of Muscle Cell Differentiation</a> , <a href="#">Regulation of G-Protein Coupled Receptor Protein Signaling</a> , <a href="#">Proton Transport</a> , <a href="#">Skeletal Muscle Fiber Development</a> , <a href="#">CXCR4-mediated Signaling Events</a> , <a href="#">G-protein mediated Events</a>

## Application Details

---

Application Notes:	WB,1:500 - 1:2000,IHC,1:50 - 1:200
Restrictions:	For Research Use only

## Handling

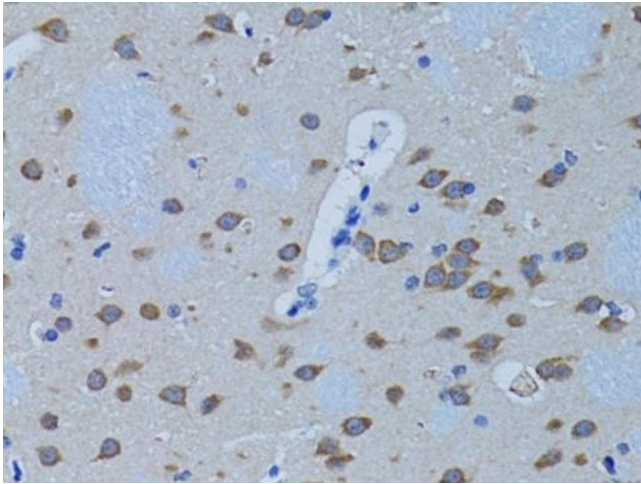
---

Format:	Liquid
Buffer:	PBS with 0.02 % sodium azide,50 % glycerol, pH 7.3.
Preservative:	Sodium azide
Precaution of Use:	This product contains Sodium azide: a POISONOUS AND HAZARDOUS SUBSTANCE which should be handled by trained staff only.
Handling Advice:	Avoid freeze / thaw cycles
Storage:	-20 °C

## Handling

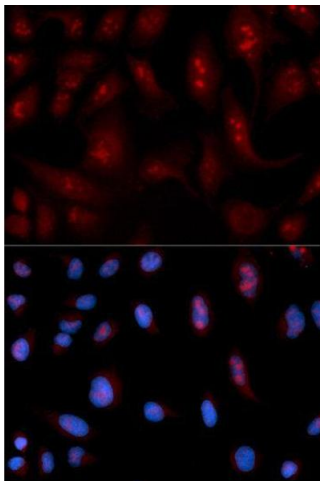
Storage Comment: Store at -20°C. Avoid freeze / thaw cycles.

## Images



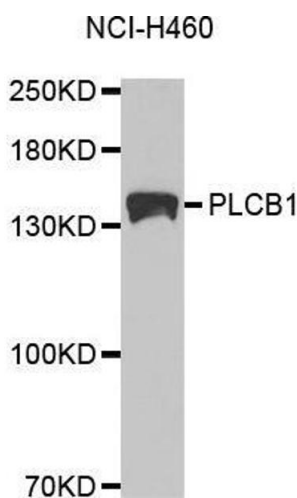
### Immunohistochemistry

**Image 1.** Immunohistochemistry of paraffin-embedded rat brain using PLCB1 antibody (ABIN3022698, ABIN3022699, ABIN3022700, ABIN1513385 and ABIN6219126) at dilution of 1:100 (40x lens). Perform microwave antigen retrieval with 10 mM PBS buffer pH 7.2 before commencing with IHC staining protocol.



### Immunofluorescence

**Image 2.** Immunofluorescence analysis of U2OS cell using PLCB1 antibody. Blue: DAPI for nuclear staining.



### Western Blotting

**Image 3.** Western blot analysis of extracts of NCI-H460 cell lines, using PLCB1 antibody.