

Datasheet for ABIN3022702
anti-PSMB5 antibody (AA 1-263)[Go to Product page](#)

7 Images

Overview

Quantity:	100 µL
Target:	PSMB5
Binding Specificity:	AA 1-263
Reactivity:	Human
Host:	Rabbit
Clonality:	Polyclonal
Conjugate:	This PSMB5 antibody is un-conjugated
Application:	Western Blotting (WB), Immunofluorescence (IF), Immunoprecipitation (IP)

Product Details

Immunogen:	Recombinant fusion protein containing a sequence corresponding to amino acids 1-263 of human PSMB5 (NP_002788.1).
Sequence:	MALASVLERP LPVNQRGFFG LGGRADLLDL GPGSLSDGLS LAAPGWGVPE EPGIEMLHGT TTLAFKFRHG VIVAADSRAT AGAYIASQTV KKVIEINPYL LGTMAGGAAD CSFWERLLAR QCRIYELRNK ERISVAAASK LLANMVYQYK GMGLSMGTMI CGWDKRG PGL YYVDSEGNRI SGATFSVGSG SVYAYGVMDR GYSYDLEVEQ AYDLARRAIY QATYRDAYSG GAVNLYHVRE DGWIRVSSDN VADLHEKYSG STP
Isotype:	IgG
Cross-Reactivity:	Human, Mouse, Rat
Characteristics:	Polyclonal Antibodies

Target Details

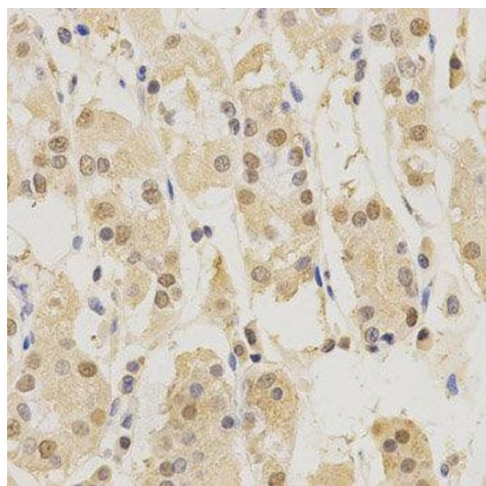
Target:	PSMB5
Alternative Name:	PSMB5 (PSMB5 Products)
Background:	<p>The proteasome is a multicatalytic proteinase complex with a highly ordered ring-shaped 20S core structure. The core structure is composed of 4 rings of 28 non-identical subunits, 2 rings are composed of 7 alpha subunits and 2 rings are composed of 7 beta subunits. Proteasomes are distributed throughout eukaryotic cells at a high concentration and cleave peptides in an ATP/ubiquitin-dependent process in a non-lysosomal pathway. An essential function of a modified proteasome, the immunoproteasome, is the processing of class I MHC peptides. This gene encodes a member of the proteasome B-type family, also known as the T1B family, that is a 20S core beta subunit in the proteasome. This catalytic subunit is not present in the immunoproteasome and is replaced by catalytic subunit 3i (proteasome beta 8 subunit). Multiple transcript variants encoding different isoforms have been found for this gene.,PSMB5,LMPX,MB1,X,Cell Biology & Developmental Biology,Ubiquitin,PSMB5</p>
Molecular Weight:	17 kDa/21 kDa/28 kDa
Gene ID:	5693
UniProt:	P28074
Pathways:	Mitotic G1-G1/S Phases , DNA Replication , Synthesis of DNA

Application Details

Application Notes:	WB,1:500 - 1:2000,IF,1:50 - 1:200,IP,1:50 - 1:100
Restrictions:	For Research Use only

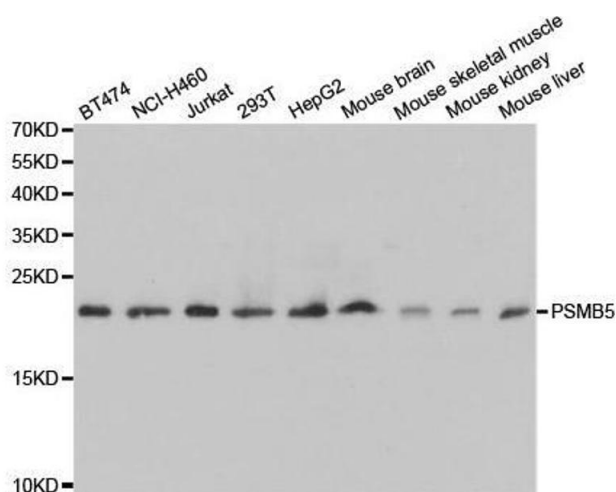
Handling

Buffer:	PBS with 0.02 % sodium azide,50 % glycerol, pH 7.3.
Preservative:	Sodium azide
Precaution of Use:	This product contains Sodium azide: a POISONOUS AND HAZARDOUS SUBSTANCE which should be handled by trained staff only.
Storage:	-20 °C
Storage Comment:	Store at -20°C. Avoid freeze / thaw cycles.



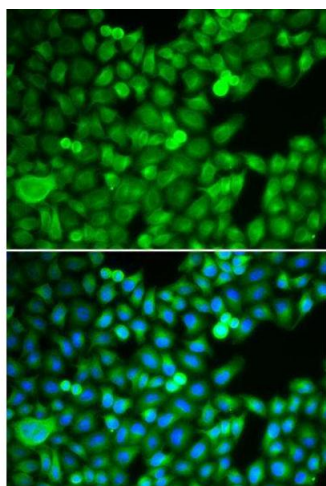
Immunohistochemistry

Image 1. Immunohistochemistry of paraffin-embedded human stomach using PSMB5 antibody at dilution of 1:200 (x400 lens).



Western Blotting

Image 2. Western blot analysis of extracts of various cell lines, using PSMB5 antibody.



Immunofluorescence

Image 3. Immunofluorescence analysis of MCF-7 cell using PSMB5 antibody. Blue: DAPI for nuclear staining.

Please check the [product details page](#) for more images. Overall 7 images are available for ABIN3022702.