

Datasheet for ABIN3022705  
**anti-PSMC3 antibody (AA 1-180)**

## 7 Images

[Go to Product page](#)

## Overview

Quantity:	100 µL
Target:	PSMC3
Binding Specificity:	AA 1-180
Reactivity:	Human
Host:	Rabbit
Clonality:	Polyclonal
Conjugate:	This PSMC3 antibody is un-conjugated
Application:	Western Blotting (WB), Immunohistochemistry (IHC)

## Product Details

Immunogen:	Recombinant fusion protein containing a sequence corresponding to amino acids 1-180 of human PSMC3 (NP_002799.3).
Sequence:	MEEGGRDKAP VQPQQSPAAA PGGTDEKPSG KERRDAGDKD KEQELSEEDK QLQDELEMLV ERLGEKDTSL YRPALEELRR QIRSTTSMT SVPKPLKFLR PHYGKLKEIY ENMAPGENKR FAADIISVLA MTMSGERECL KYRLVGSQEE LASWGHEYVR HLAGEVAKEW QELDDAEKVQ
Isotype:	IgG
Cross-Reactivity:	Human, Mouse, Rat
Characteristics:	Polyclonal Antibodies

## Target Details

Target:	PSMC3
---------	-------

## Target Details

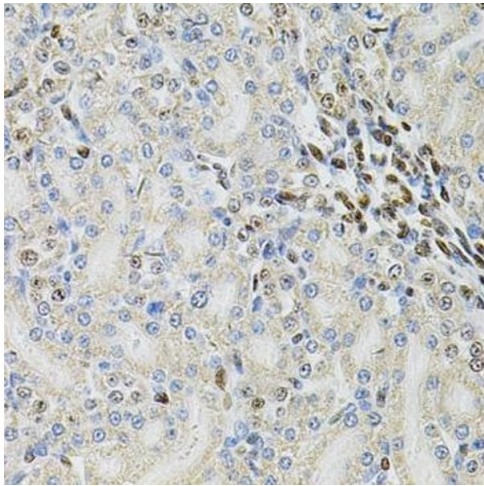
Alternative Name:	PSMC3 ( <a href="#">PSMC3 Products</a> )
Background:	<p>The 26S proteasome is a multicatalytic proteinase complex with a highly ordered structure composed of 2 complexes, a 20S core and a 19S regulator. The 20S core is composed of 4 rings of 28 non-identical subunits, 2 rings are composed of 7 alpha subunits and 2 rings are composed of 7 beta subunits. The 19S regulator is composed of a base, which contains 6 ATPase subunits and 2 non-ATPase subunits, and a lid, which contains up to 10 non-ATPase subunits. Proteasomes are distributed throughout eukaryotic cells at a high concentration and cleave peptides in an ATP/ubiquitin-dependent process in a non-lysosomal pathway. An essential function of a modified proteasome, the immunoproteasome, is the processing of class I MHC peptides. This gene encodes one of the ATPase subunits, a member of the triple-A family of ATPases that have chaperone-like activity. This subunit may compete with PSMC2 for binding to the HIV tat protein to regulate the interaction between the viral protein and the transcription complex. A pseudogene has been identified on chromosome 9.,PSMC3,TBP1,ATPase 3,Cell Biology &amp; Developmental Biology,Ubiquitin,PSMC3</p>
Molecular Weight:	49 kDa
Gene ID:	5702
UniProt:	<a href="#">P17980</a>
Pathways:	<a href="#">Mitotic G1-G1/S Phases</a> , <a href="#">DNA Replication</a> , <a href="#">Synthesis of DNA</a> , <a href="#">Ubiquitin Proteasome Pathway</a>

## Application Details

Application Notes:	WB,1:500 - 1:2000,IHC,1:50 - 1:200
Restrictions:	For Research Use only

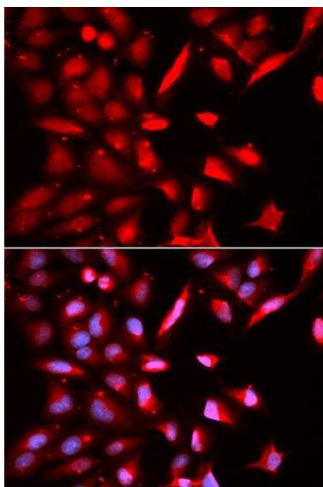
## Handling

Buffer:	PBS with 0.02 % sodium azide,50 % glycerol, pH 7.3.
Preservative:	Sodium azide
Precaution of Use:	This product contains Sodium azide: a POISONOUS AND HAZARDOUS SUBSTANCE which should be handled by trained staff only.
Storage:	-20 °C
Storage Comment:	Store at -20°C. Avoid freeze / thaw cycles.



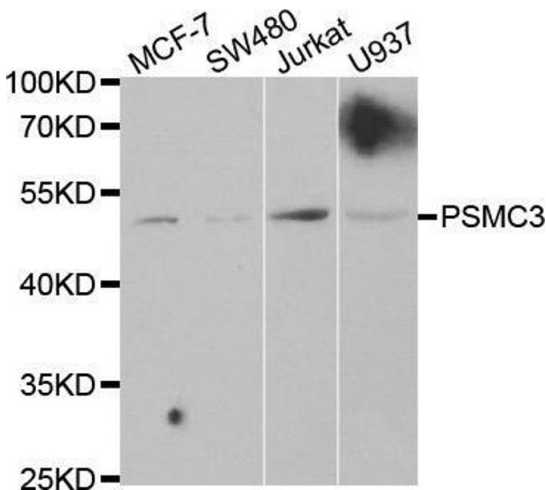
### Immunohistochemistry

**Image 1.** Immunohistochemistry of paraffin-embedded rat kidney using PSMC3 Antibody (ABIN3022704, ABIN3022705, ABIN3022706 and ABIN6219146) at dilution of 1:100 (40x lens). Perform microwave antigen retrieval with 10 mM PBS buffer pH 7.2 before commencing with IHC staining protocol.



### Immunofluorescence

**Image 2.** Immunofluorescence analysis of U2OS cell using PSMC3 antibody. Blue: DAPI for nuclear staining.



### Western Blotting

**Image 3.** Western blot analysis of extracts of various cell lines, using PSMC3 antibody.

Please check the [product details page](#) for more images. Overall 7 images are available for ABIN3022705.