

Datasheet for ABIN3022763  
**anti-CD94 antibody (AA 32-179)**



[Go to Product page](#)

5 Images

Overview

Quantity:	100 µL
Target:	CD94 (KLRD1)
Binding Specificity:	AA 32-179
Reactivity:	Human
Host:	Rabbit
Clonality:	Polyclonal
Conjugate:	This CD94 antibody is un-conjugated
Application:	Western Blotting (WB)

Product Details

Immunogen:	Recombinant fusion protein containing a sequence corresponding to amino acids 32-179 of human KLRD1 (NP_002253.1).
Sequence:	KNSFTKLSIE PAFTPGPNIE LQKSDCCSC QEKWVGYRCN CYFISSEQKT WNESRHLCAS QKSSLLQLQN TDELDFMSSS QQFYWIGLSY SEEHTAWLWE NGSALSQYLF PSFETFNTKN CIAYNPNGNA LDESCEDKNR YICKQQLI
Isotype:	IgG
Cross-Reactivity:	Human, Mouse
Characteristics:	Polyclonal Antibodies

Target Details

Target:	CD94 (KLRD1)
---------	--------------

## Target Details

---

Alternative Name:	KLRD1 ( <a href="#">KLRD1 Products</a> )
Background:	Natural killer (NK) cells are a distinct lineage of lymphocytes that mediate cytotoxic activity and secrete cytokines upon immune stimulation. Several genes of the C-type lectin superfamily, including members of the NKG2 family, are expressed by NK cells and may be involved in the regulation of NK cell function. KLRD1 (CD94) is an antigen preferentially expressed on NK cells and is classified as a type II membrane protein because it has an external C terminus. Three transcript variants encoding two different isoforms have been found for this gene.,KLRD1,CD94,Immunology & Inflammation,CD markers,KLRD1
Molecular Weight:	17 kDa/20 kDa
Gene ID:	3824
UniProt:	<a href="#">Q13241</a>

## Application Details

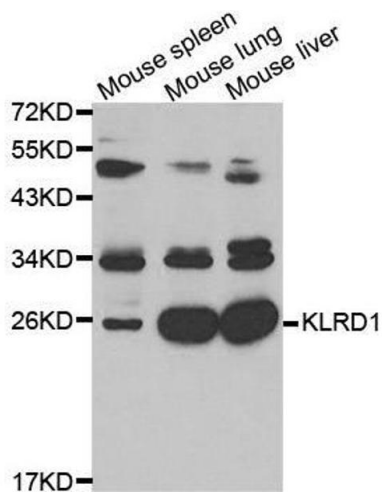
---

Application Notes:	WB,1:500 - 1:2000
Restrictions:	For Research Use only

## Handling

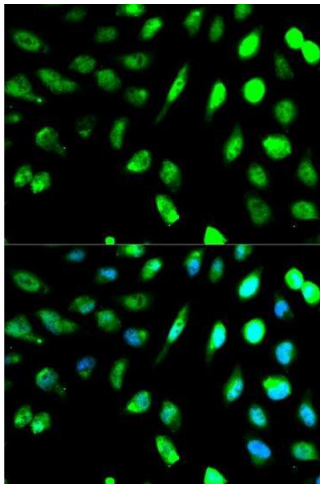
---

Format:	Liquid
Buffer:	PBS with 0.02 % sodium azide,50 % glycerol, pH 7.3.
Preservative:	Sodium azide
Precaution of Use:	This product contains Sodium azide: a POISONOUS AND HAZARDOUS SUBSTANCE which should be handled by trained staff only.
Handling Advice:	Avoid freeze / thaw cycles
Storage:	-20 °C
Storage Comment:	Store at -20°C. Avoid freeze / thaw cycles.



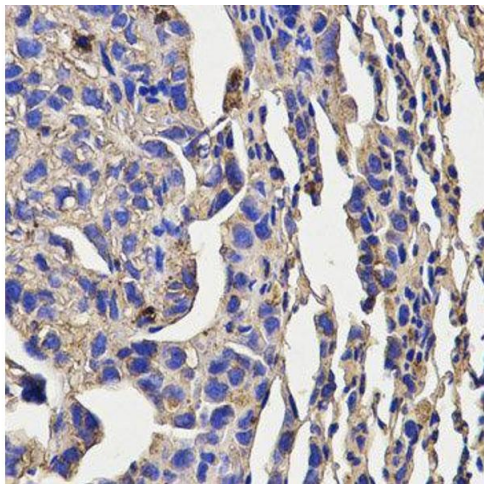
### Western Blotting

**Image 1.** Western blot analysis of extracts of K562 cell lines, using KLRD1 antibody.



### Immunofluorescence

**Image 2.** Immunofluorescence analysis of MCF7 cell using KLRD1 antibody. Blue: DAPI for nuclear staining.



### Immunohistochemistry

**Image 3.**

Please check the [product details page](#) for more images. Overall 5 images are available for ABIN3022763.