

Datasheet for ABIN3022778  
**anti-LHX8 antibody (AA 1-220)**[Go to Product page](#)

## 2 Images

## Overview

Quantity:	100 µL
Target:	LHX8
Binding Specificity:	AA 1-220
Reactivity:	Human
Host:	Rabbit
Clonality:	Polyclonal
Conjugate:	This LHX8 antibody is un-conjugated
Application:	Western Blotting (WB)

## Product Details

Immunogen:	Recombinant fusion protein containing a sequence corresponding to amino acids 1-220 of human LHX8 (NP_001001933.1).
Sequence:	MQILSRCQGL MSEECGRTTA LAAGRTRKGA GEEGLVSPEG AGDEDESCSSS APLSPSSSPR SMASGSGCPP GKVCNCSGL EIVDKYLLKV NDLCWHVRCL SCSVCRTSLG RHTSCYIKDK DIFCKLDYFR RYGTRCSRCL RHIHSTDWVR RAKGNVYHLA CFACFCKRQ LSTGEFALV EEKVLCRVHY DCMLDNLKRE VENGNGISVE GALLTEQDVN
Isotype:	IgG
Cross-Reactivity:	Mouse, Rat
Characteristics:	Polyclonal Antibodies

## Target Details

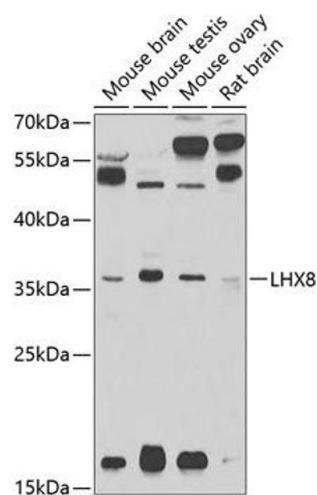
Target:	LHX8
Alternative Name:	LHX8 ( <a href="#">LHX8 Products</a> )
Background:	<p>The protein encoded by this gene is a member of the LIM homeobox family of proteins, which are involved in patterning and differentiation of various tissue types. These proteins contain two tandemly repeated cysteine-rich double-zinc finger motifs known as LIM domains, in addition to a DNA-binding homeodomain. This family member is a transcription factor that plays a role in tooth morphogenesis. It is also involved in oogenesis and in neuronal differentiation. This gene is a candidate gene for cleft palate, and it is also associated with odontoma formation.</p> <p>Alternative splicing of this gene results in multiple transcript variants.,LHX8,LHX7,Epigenetics &amp; Nuclear Signaling,Transcription Factors,Cell Biology &amp; Developmental Biology,Stem Cells,Germline Stem Cells,LHX8</p>
Molecular Weight:	38 kDa/39 kDa
Gene ID:	431707
UniProt:	<a href="#">Q68G74</a>

## Application Details

Application Notes:	WB,1:500 - 1:2000
Restrictions:	For Research Use only

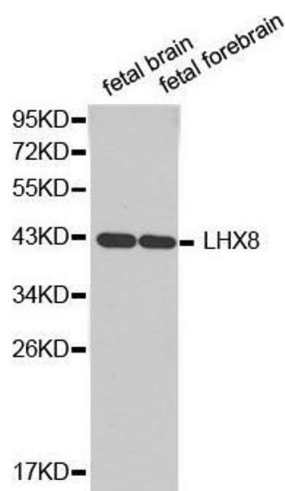
## Handling

Format:	Liquid
Buffer:	PBS with 0.02 % sodium azide,50 % glycerol, pH 7.3.
Preservative:	Sodium azide
Precaution of Use:	This product contains Sodium azide: a POISONOUS AND HAZARDOUS SUBSTANCE which should be handled by trained staff only.
Handling Advice:	Avoid freeze / thaw cycles
Storage:	-20 °C
Storage Comment:	Store at -20°C. Avoid freeze / thaw cycles.



#### Western Blotting

**Image 1.** Western blot analysis of extracts of various cell lines, using LHX8 antibody (ABIN3022777, ABIN3022778, ABIN3022779 and ABIN6219224) at 1:1000 dilution. Secondary antibody: HRP Goat Anti-Rabbit IgG (H+L) (ABIN1684268 and ABIN3020597) at 1:10000 dilution. Lysates/proteins: 25 µg per lane. Blocking buffer: 3 % nonfat dry milk in TBST. Detection: ECL Enhanced Kit (RM00021). Exposure time: 90s.



#### Western Blotting

**Image 2.** Western blot analysis of extracts of various cell lines, using LHX8 antibody.