



[Go to Product page](#)

Datasheet for ABIN3022816
anti-CD33 antibody (AA 49-259)

6 Images

Overview

Quantity:	100 µL
Target:	CD33
Binding Specificity:	AA 49-259
Reactivity:	Human
Host:	Rabbit
Clonality:	Polyclonal
Conjugate:	This CD33 antibody is un-conjugated
Application:	Western Blotting (WB), Immunofluorescence (IF), Immunohistochemistry (IHC)

Product Details

Immunogen:	Recombinant fusion protein containing a sequence corresponding to amino acids 49-259 of human SIGLEC3/CD33 (NP_001763.3).
Sequence:	YYDKNSPVHG YWFREGAII RDSPVATNKL DQEVQEETQG RFRL LGDPSR NNCSLSIVDA RRRDNGSYFF RMRGSKTKYS YKSPQLSVHV TDLTHRPKIL IPGTLEPGHS KNLTCSVSWA CEQGTPIIFS WLSAAPTSLG PRTHSSVLI ITPRPQDHGT NLTCQVKFAG AGVTTERTIQ LNVTYVPQNP TTGIFPGDGS GKQETRAGVV H
Isotype:	IgG
Cross-Reactivity:	Human, Mouse, Rat
Characteristics:	Polyclonal Antibodies
Purification:	Affinity purification

Target Details

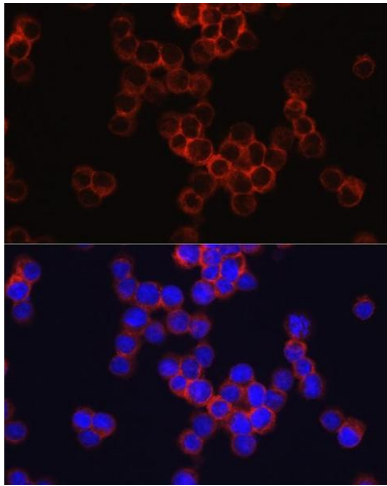
Target:	CD33
Alternative Name:	CD33 (CD33 Products)
Background:	<p>Myeloid cell surface antigen CD33 also known as Sialic acid binding Ig-like lectin 3, CD33 antigen or Siglec-3, is a member of the immunoglobulin superfamily and SIGLEC (sialic acid binding Ig-like lectin) family. This Single-pass type I membrane protein contains 1 Ig-like C2-type (immunoglobulin-like) domain and 1 Ig-like V-type (immunoglobulin-like) domain. CD33/Siglec-3 induces apoptosis in acute myeloid leukemia (in vitro). CD33/Siglec-3 can function as a sialic acid-dependent cell adhesion molecule and that binding can be modulated by endogenous sialoglycoconjugates when CD33 is expressed in a plasma membrane.,CD33,SIGLEC-3,SIGLEC3,p67,Immunology & Inflammation,CD markers,Stem Cells,Hematopoietic Progenitors,CD33</p>
Molecular Weight:	25 kDa/33 kDa/39 kDa
Gene ID:	945
UniProt:	P20138

Application Details

Application Notes:	WB,1:500 - 1:2000,IHC,1:50 - 1:200,IF,1:50 - 1:200
Restrictions:	For Research Use only

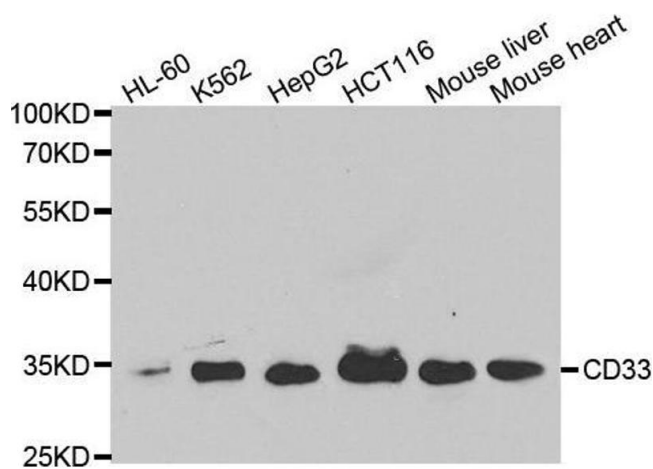
Handling

Format:	Liquid
Buffer:	PBS with 0.02 % sodium azide,50 % glycerol, pH 7.3.
Preservative:	Sodium azide
Precaution of Use:	This product contains Sodium azide: a POISONOUS AND HAZARDOUS SUBSTANCE which should be handled by trained staff only.
Handling Advice:	Avoid freeze / thaw cycles
Storage:	-20 °C
Storage Comment:	Store at -20°C. Avoid freeze / thaw cycles.



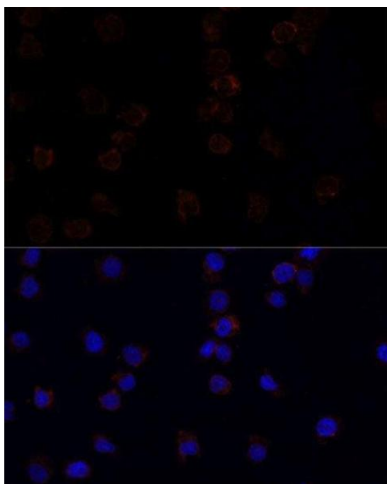
Immunofluorescence

Image 1. Immunofluorescence analysis of TF-1 cells using SIGLEC3/CD33 Rabbit pAb (ABIN3022815, ABIN3022816, ABIN3022817, ABIN1512703 and ABIN6219241) at dilution of 1:150 (40x lens). Blue: DAPI for nuclear staining.



Western Blotting

Image 2. Western blot analysis of extracts of various cell lines, using CD33 antibody.



Immunofluorescence

Image 3. Immunofluorescence analysis of THP-1 cells using CD33 antibody.

Please check the [product details page](#) for more images. Overall 6 images are available for ABIN3022816.