

Datasheet for ABIN3022819
anti-CDKN1C antibody (AA 1-100)

2 Images

[Go to Product page](#)

Overview

Quantity:	100 µL
Target:	CDKN1C
Binding Specificity:	AA 1-100
Reactivity:	Human
Host:	Rabbit
Clonality:	Polyclonal
Conjugate:	This CDKN1C antibody is un-conjugated
Application:	Western Blotting (WB)

Product Details

Immunogen:	A synthetic peptide corresponding to a sequence within amino acids 1-100 of human CDKN1C/p57 Kip2 (NP_000067.1).
Sequence:	MSDASLRSTS TMERLVARGT FPVLVRTSAC RSLFGPVDHE ELSRELQARL AELNAEDQNR WDYDFQQDMP LRGPGRQLQWT EVDSDSVPAF YRETVQVGRC
Isotype:	IgG
Cross-Reactivity:	Human, Mouse, Rat
Characteristics:	Polyclonal Antibodies
Purification:	Affinity purification

Target Details

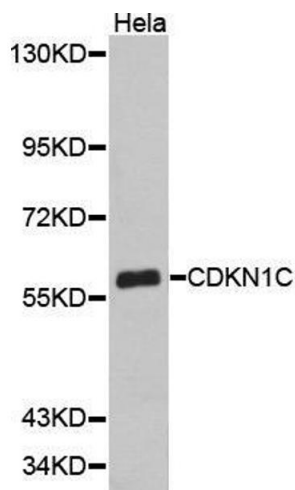
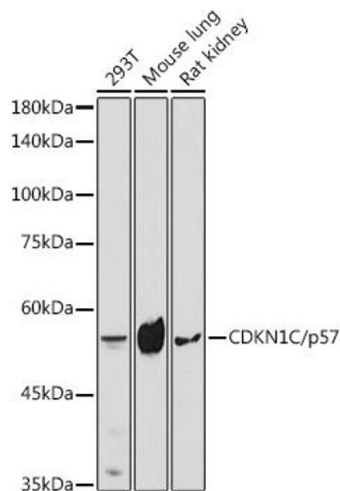
Target:	CDKN1C
Alternative Name:	CDKN1C (CDKN1C Products)
Background:	<p>This gene is imprinted, with preferential expression of the maternal allele. The encoded protein is a tight-binding, strong inhibitor of several G1 cyclin/Cdk complexes and a negative regulator of cell proliferation. Mutations in this gene are implicated in sporadic cancers and Beckwith-Wiedemann syndrome, suggesting that this gene is a tumor suppressor candidate. Three transcript variants encoding two different isoforms have been found for this gene.,CDKN1C,BWCR,BWS,KIP2,WBS,p57,p57Kip2,Epigenetics & Nuclear Signaling,Cancer,Signal Transduction,Kinase,Cell Biology & Developmental Biology,Cell Cycle,Cell cycle inhibitors,CDKN1C</p>
Molecular Weight:	31 kDa/32 kDa
Gene ID:	1028
UniProt:	P49918
Pathways:	Cell Division Cycle , Dopaminergic Neurogenesis

Application Details

Application Notes:	WB,1:500 - 1:2000
Restrictions:	For Research Use only

Handling

Format:	Liquid
Buffer:	PBS with 0.02 % sodium azide,50 % glycerol, pH 7.3.
Preservative:	Sodium azide
Precaution of Use:	This product contains Sodium azide: a POISONOUS AND HAZARDOUS SUBSTANCE which should be handled by trained staff only.
Handling Advice:	Avoid freeze / thaw cycles
Storage:	-20 °C
Storage Comment:	Store at -20°C. Avoid freeze / thaw cycles.



Western Blotting

Image 1. Western blot analysis of extracts of various cell lines, using CDKN1C/p57 Kip2 antibody (ABIN3022818, ABIN3022819, ABIN3022820, ABIN1512749 and ABIN6219243) at 1:1000 dilution. Secondary antibody: HRP Goat Anti-Rabbit IgG (H+L) (ABIN1684268 and ABIN3020597) at 1:10000 dilution. Lysates/proteins: 25 µg per lane. Blocking buffer: 3 % nonfat dry milk in TBST. Detection: ECL Basic Kit (RM00020). Exposure time: 180s.

Western Blotting

Image 2.