



Datasheet for ABIN3022843
anti-EEF2 antibody (AA 1-290)



[Go to Product page](#)

3 Images

Overview

Quantity:	100 µL
Target:	EEF2
Binding Specificity:	AA 1-290
Reactivity:	Human
Host:	Rabbit
Clonality:	Polyclonal
Conjugate:	This EEF2 antibody is un-conjugated
Application:	Western Blotting (WB)

Product Details

Immunogen:	Recombinant fusion protein containing a sequence corresponding to amino acids 1-290 of human eEF2 (NP_001952.1).
Sequence:	MVNFTVDQIR AIMDKKANIR NMSVIAHVDH GKSTLTDSLK CKAGIASAR AGETRFTDTR KDEQERCITI KSTAI SLFYE LSENDLNFIK QSKDGAGFLI NLIDSPGHVD FSSEVTAALR VTDGALVVVD CVSGVCVQTE TVLRQAIAER IKPVLMMNMK DRALLELQLE PEELYQTFQR IVENVNVIIS TYGEGESGPM GNIMIDPVLG TVGFGSGLHG WAFTLKQFAE MYVAKFAAKG EGQLGPAERA KKVEDMMKKL WGDYFDPAN GKFSKSATSP EGKKLPRFTFC
Isotype:	IgG
Cross-Reactivity:	Human
Characteristics:	Polyclonal Antibodies
Purification:	Affinity purification

Target Details

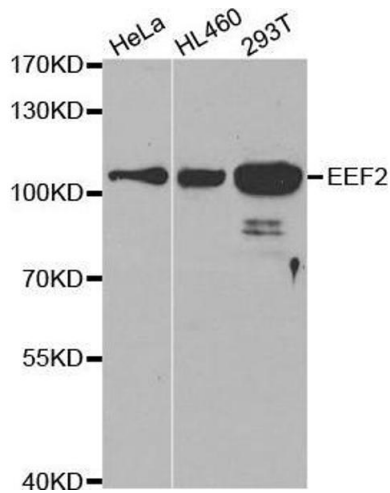
Target:	EEF2
Alternative Name:	EEF2 (EEF2 Products)
Background:	This gene encodes a member of the GTP-binding translation elongation factor family. This protein is an essential factor for protein synthesis. It promotes the GTP-dependent translocation of the nascent protein chain from the A-site to the P-site of the ribosome. This protein is completely inactivated by EF-2 kinase phosphorylation.,EEF2,EEF-2,EF-2,EF2,SCA26,Epigenetics & Nuclear Signaling,RNA Binding,Translation Control,Endocrine & Metabolism,AMPK Signaling Pathway,EEF2
Molecular Weight:	95 kDa
Gene ID:	1938
UniProt:	P13639
Pathways:	AMPK Signaling

Application Details

Application Notes:	WB,1:500 - 1:2000
Restrictions:	For Research Use only

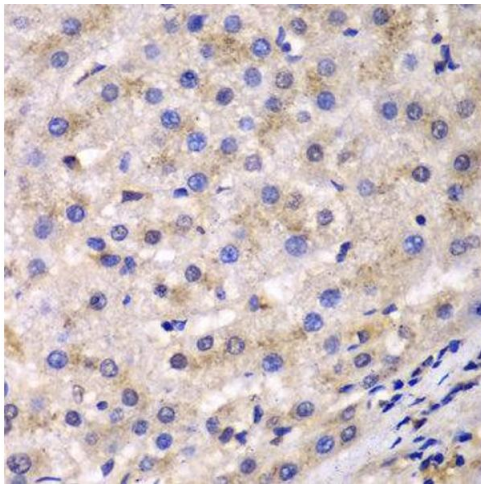
Handling

Format:	Liquid
Buffer:	PBS with 0.02 % sodium azide,50 % glycerol, pH 7.3.
Preservative:	Sodium azide
Precaution of Use:	This product contains Sodium azide: a POISONOUS AND HAZARDOUS SUBSTANCE which should be handled by trained staff only.
Handling Advice:	Avoid freeze / thaw cycles
Storage:	-20 °C
Storage Comment:	Store at -20°C. Avoid freeze / thaw cycles.



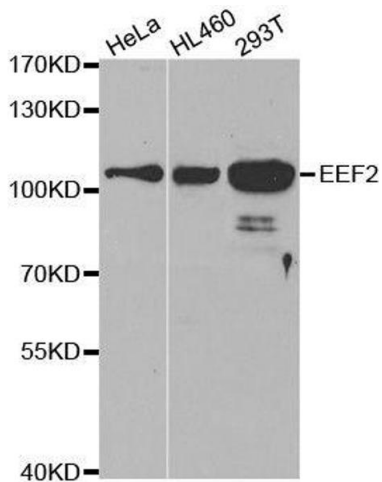
Western Blotting

Image 1. Western blot analysis of extracts of various cell lines, using EEF2 antibody.



Immunohistochemistry

Image 2.



Western Blotting

Image 3. Western blot analysis of extracts of various cell lines, using EEF2 antibody.