



[Go to Product page](#)

Datasheet for ABIN3022846
anti-EPHX1 antibody (AA 20-320)

3 Images

Overview

Quantity:	100 µL
Target:	EPHX1
Binding Specificity:	AA 20-320
Reactivity:	Human
Host:	Rabbit
Clonality:	Polyclonal
Conjugate:	This EPHX1 antibody is un-conjugated
Application:	Western Blotting (WB)

Product Details

Immunogen:	Recombinant fusion protein containing a sequence corresponding to amino acids 20-320 of human EPHX1 (NP_000111.1).
Sequence:	SRDKEETLPL EDGWWGPGTR SAAREDDSIR PFKVETSDEE IHDLHQRIDK FRFTPPLEDS CFHYGFNSNY LKKVISYWRN EFDWKKQVEI LNRYPHFKTK IEGLDIHFIH VKPPQLPAGH TPKPLLMVHG WPGSFYEFYK IIPLLTDPKN HGLSDEHVFE VICPSIPGYG FSEASSKKGF NSVATARIFY KLMLRLGFQE FYIQGGDWGS LICTNMAQLV PSHVKGLHLN MALVLSNFST LTLGLGQRFQ RFLGLTERDV ELLYPVKEKV FYSLMRESGY MHIQCTKPDV VGSALNDSPV G
Isotype:	IgG
Cross-Reactivity:	Human, Mouse
Characteristics:	Polyclonal Antibodies
Purification:	Affinity purification

Target Details

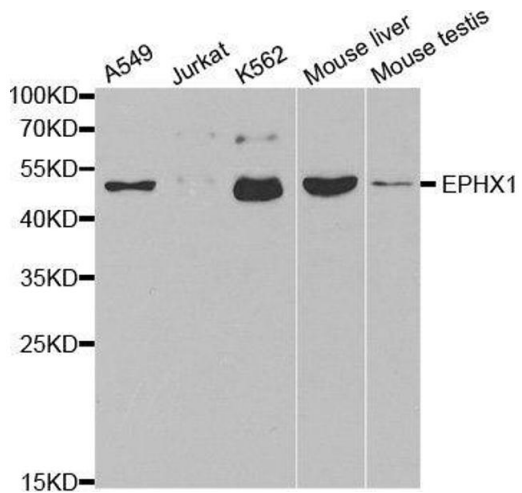
Target:	EPHX1
Alternative Name:	EPHX1 (EPHX1 Products)
Background:	Epoxide hydrolase is a critical biotransformation enzyme that converts epoxides from the degradation of aromatic compounds to trans-dihydrodiols which can be conjugated and excreted from the body. Epoxide hydrolase functions in both the activation and detoxification of epoxides. Mutations in this gene cause preeclampsia, epoxide hydrolase deficiency or increased epoxide hydrolase activity. Alternatively spliced transcript variants encoding the same protein have been found for this gene.,EPHX1,EPHX,EPOX,HYL1,MEH,Cell Biology & Developmental Biology,Endocrine & Metabolism,EPHX1
Molecular Weight:	52 kDa
Gene ID:	2052
UniProt:	P07099

Application Details

Application Notes:	WB,1:500 - 1:2000
Restrictions:	For Research Use only

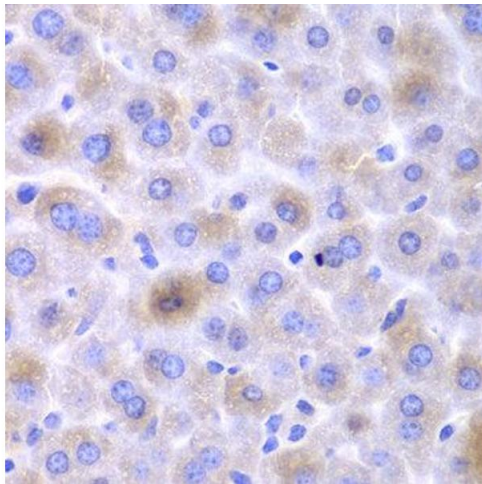
Handling

Format:	Liquid
Buffer:	PBS with 0.02 % sodium azide,50 % glycerol, pH 7.3.
Preservative:	Sodium azide
Precaution of Use:	This product contains Sodium azide: a POISONOUS AND HAZARDOUS SUBSTANCE which should be handled by trained staff only.
Handling Advice:	Avoid freeze / thaw cycles
Storage:	-20 °C
Storage Comment:	Store at -20°C. Avoid freeze / thaw cycles.



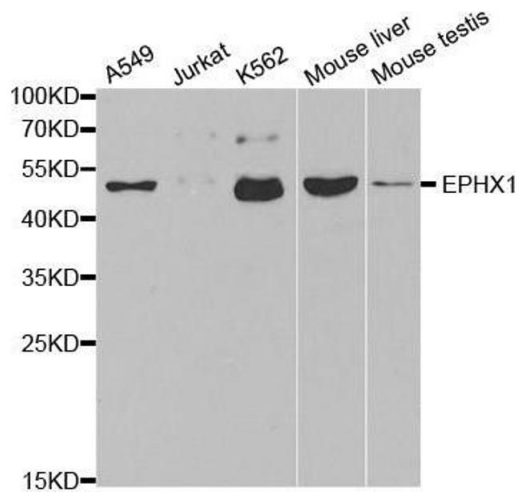
Western Blotting

Image 1. Western blot analysis of extracts of various cell lines, using EPHX1 antibody.



Immunohistochemistry

Image 2.



Western Blotting

Image 3. Western blot analysis of extracts of various cell lines, using EPHX1 antibody.