

Datasheet for ABIN3022855  
**anti-FGFR2 antibody (AA 1-100)**

## 7 Images

[Go to Product page](#)

## Overview

Quantity:	100 µL
Target:	FGFR2
Binding Specificity:	AA 1-100
Reactivity:	Human
Host:	Rabbit
Clonality:	Polyclonal
Conjugate:	This FGFR2 antibody is un-conjugated
Application:	Immunohistochemistry (IHC)

## Product Details

Immunogen:	A synthetic peptide corresponding to a sequence within amino acids 1-100 of human FGFR2 (NP_000132.3).
Sequence:	MVSWGRFICL VVVTMATLSL ARPSFSLVED TTLEPEEPPT KYQISQPEVY VAAPGESLEV RCLKDAAVI SWTKDGVHLG PNNRTVLIGE YLQIKGATPR
Isotype:	IgG
Cross-Reactivity:	Human, Mouse, Rat
Characteristics:	Polyclonal Antibodies
Purification:	Affinity purification

## Target Details

Target:	FGFR2
Alternative Name:	FGFR2 ( <a href="#">FGFR2 Products</a> )
Background:	<p>The protein encoded by this gene is a member of the fibroblast growth factor receptor family, where amino acid sequence is highly conserved between members and throughout evolution. FGFR family members differ from one another in their ligand affinities and tissue distribution. A full-length representative protein consists of an extracellular region, composed of three immunoglobulin-like domains, a single hydrophobic membrane-spanning segment and a cytoplasmic tyrosine kinase domain. The extracellular portion of the protein interacts with fibroblast growth factors, setting in motion a cascade of downstream signals, ultimately influencing mitogenesis and differentiation. This particular family member is a high-affinity receptor for acidic, basic and/or keratinocyte growth factor, depending on the isoform. Mutations in this gene are associated with Crouzon syndrome, Pfeiffer syndrome, Craniosynostosis, Apert syndrome, Jackson-Weiss syndrome, Beare-Stevenson cutis gyrata syndrome, Saethre-Chotzen syndrome, and syndromic craniosynostosis. Multiple alternatively spliced transcript variants encoding different isoforms have been noted for this gene.,BBDS,BEK,BFR-1,CD332,CEK3,CFD1,ECT1,JWS,K-SAM,KGFR,TK14,TK25,FGFR2,Cancer,Signal Transduction,Kinase,Tyrosine kinases,Cell Biology &amp; Developmental Biology,Growth factor,ESC Pluripotency and Differentiation,Immunology &amp; Inflammation,CD markers,Neuroscience,Stem Cells,Cardiovascular,Angiogenesis,FGFR2</p>
Molecular Weight:	28 kDa/40 kDa/76-92 kDa
Gene ID:	2263
UniProt:	<a href="#">P21802</a>
Pathways:	<a href="#">RTK Signaling</a> , <a href="#">Fc-epsilon Receptor Signaling Pathway</a> , <a href="#">EGFR Signaling Pathway</a> , <a href="#">Neurotrophin Signaling Pathway</a> , <a href="#">Regulation of Muscle Cell Differentiation</a> , <a href="#">Skeletal Muscle Fiber Development</a> , <a href="#">Growth Factor Binding</a>

## Application Details

Application Notes:	IHC,1:50 - 1:200
Restrictions:	For Research Use only

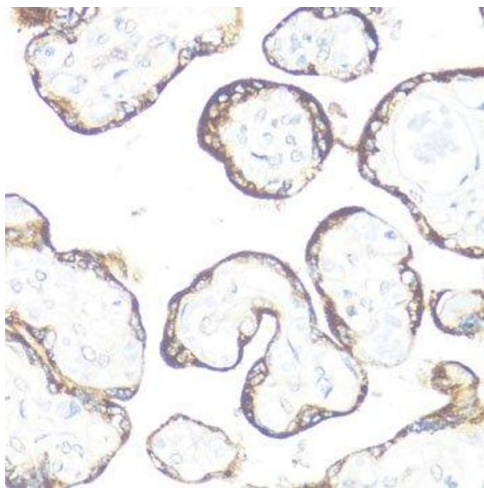
## Handling

Format:	Liquid
---------	--------

## Handling

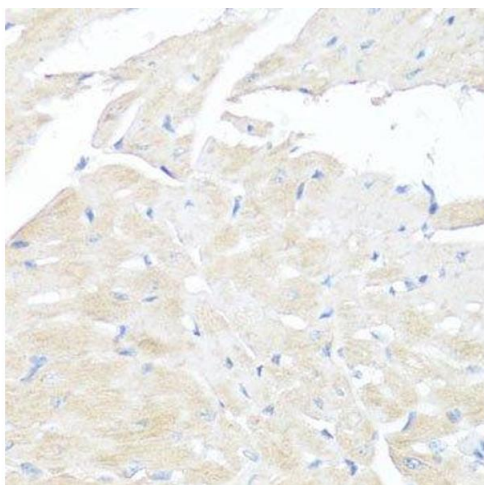
Buffer:	PBS with 0.02 % sodium azide, 50 % glycerol, pH 7.3.
Preservative:	Sodium azide
Precaution of Use:	This product contains Sodium azide: a POISONOUS AND HAZARDOUS SUBSTANCE which should be handled by trained staff only.
Handling Advice:	Avoid freeze / thaw cycles
Storage:	-20 °C
Storage Comment:	Store at -20°C. Avoid freeze / thaw cycles.

## Validation report #101403 for Immunofluorescence (IF)



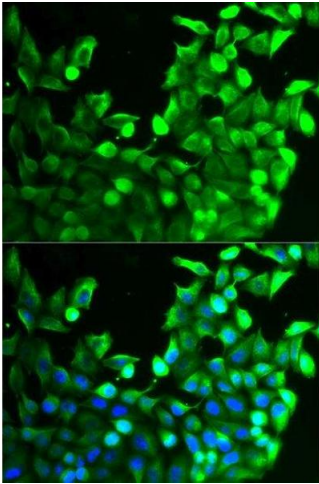
### Immunohistochemistry (Paraffin-embedded Sections)

**Image 1.** Immunohistochemistry of paraffin-embedded human placenta using FGFR2 antibody.



### Immunohistochemistry (Paraffin-embedded Sections)

**Image 2.** Immunohistochemistry of paraffin-embedded mouse heart using FGFR2 antibody.



#### Immunofluorescence

**Image 3.** Immunofluorescence analysis of MCF-7 cells using FGFR2 antibody.

Please check the [product details page](#) for more images. Overall 7 images are available for ABIN3022855.