

Datasheet for ABIN3022930  
**anti-PIN1 antibody (AA 1-163)**[Go to Product page](#)

## 4 Images

## Overview

Quantity:	100 µL
Target:	PIN1
Binding Specificity:	AA 1-163
Reactivity:	Human
Host:	Rabbit
Clonality:	Polyclonal
Conjugate:	This PIN1 antibody is un-conjugated
Application:	Western Blotting (WB)

## Product Details

Immunogen:	Recombinant fusion protein containing a sequence corresponding to amino acids 1-163 of human PIN1 (NP_006212.1).
Sequence:	MADEEKLPPG WEKMSRSSG RVEYFNHITN ASQWERPSGN SSSGGKNGQG EPARVRCSHL LVKHSQSRRP SSWRQEKITR TKEEALILIN GYIQIKSGE EDFESLASQF SDCSSAKARG DLGAFSRGQM QKPFEDASFA LRTGEMSGPV FTDSGIHIL RTE
Isotype:	IgG
Cross-Reactivity:	Human, Mouse, Rat
Characteristics:	Polyclonal Antibodies

## Target Details

Target:	PIN1
---------	------

## Target Details

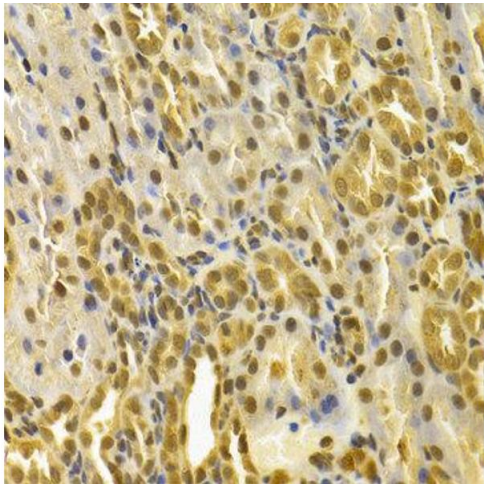
Alternative Name:	PIN1 ( <a href="#">PIN1 Products</a> )
Background:	Peptidyl-prolyl cis/trans isomerases (PPlases) catalyze the cis/trans isomerization of peptidyl-prolyl peptide bonds. This gene encodes one of the PPlases, which specifically binds to phosphorylated ser/thr-pro motifs to catalytically regulate the post-phosphorylation conformation of its substrates. The conformational regulation catalyzed by this PPlase has a profound impact on key proteins involved in the regulation of cell growth, genotoxic and other stress responses, the immune response, induction and maintenance of pluripotency, germ cell development, neuronal differentiation, and survival. This enzyme also plays a key role in the pathogenesis of Alzheimer's disease and many cancers. Multiple alternatively spliced transcript variants have been found for this gene.,PIN1,DOD,UBL5,Cell Biology & Developmental Biology,Cell Cycle,Neuroscience,Neurodegenerative Diseases,Amyloid Plaque and Neurofibrillary Tangle Formation in Alzheimer's Disease,PIN1
Molecular Weight:	18 kDa
Gene ID:	5300
UniProt:	<a href="#">Q13526</a>

## Application Details

Application Notes:	WB,1:500 - 1:2000
Restrictions:	For Research Use only

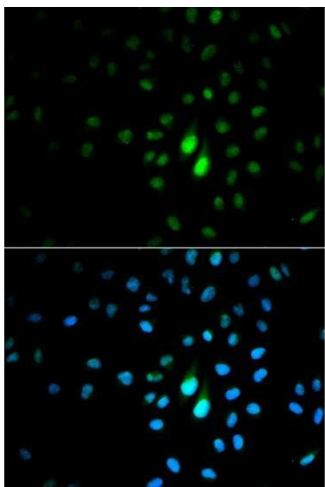
## Handling

Format:	Liquid
Buffer:	PBS with 0.02 % sodium azide,50 % glycerol, pH 7.3.
Preservative:	Sodium azide
Precaution of Use:	This product contains Sodium azide: a POISONOUS AND HAZARDOUS SUBSTANCE which should be handled by trained staff only.
Handling Advice:	Avoid freeze / thaw cycles
Storage:	-20 °C
Storage Comment:	Store at -20°C. Avoid freeze / thaw cycles.



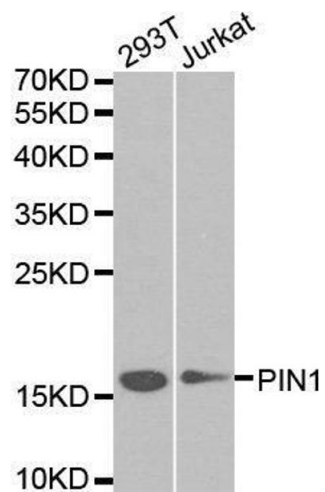
Immunohistochemistry

Image 1.



Immunofluorescence

Image 2. Immunofluorescence analysis of MCF7 cell using PIN1 antibody. Blue: DAPI for nuclear staining.



Western Blotting

Image 3. Western blot analysis of extracts of various cell lines, using PIN1 antibody.

Please check the [product details page](#) for more images. Overall 4 images are available for ABIN3022930.