



[Go to Product page](#)

Datasheet for ABIN3022942

anti-PKC epsilon antibody (AA 488-737)

7 Images

Overview

Quantity:	100 µL
Target:	PKC epsilon (PRKCE)
Binding Specificity:	AA 488-737
Reactivity:	Human
Host:	Rabbit
Clonality:	Polyclonal
Conjugate:	This PKC epsilon antibody is un-conjugated
Application:	Western Blotting (WB), Immunohistochemistry (IHC)

Product Details

Immunogen:	Recombinant fusion protein containing a sequence corresponding to amino acids 488-737 of human PKC epsilon (NP_005391.1).
Sequence:	YVNGGDLMFQ IQRSRKFDEP RSRFYAAEVT SALMFLHQHG VIYRDLKLDN ILLDAEGHCK LADFGMCKEG ILNGVTTTTF CGTPDYIAPE ILQELEYGPS VDWWALGVLM YEMMAGQPPF EADNEDDLFE SILHDDVLYP VWLSKEAVSI LKAFMTKNPH KRLGCVASQN GEDAIKQHPF FKEIDWVLE QKKIKPPFKP RIKTKRDVNN FDQDFTREEP VLTLVDEAIV KQINQEEFKG FSYFGEDLMP
Isotype:	IgG
Cross-Reactivity:	Human, Mouse, Rat
Characteristics:	Polyclonal Antibodies

Target Details

Target: PKC epsilon (PRKCE)

Alternative Name: PRKCE ([PRKCE Products](#))

Background: Protein kinase C (PKC) is a family of serine- and threonine-specific protein kinases that can be activated by calcium and the second messenger diacylglycerol. PKC family members phosphorylate a wide variety of protein targets and are known to be involved in diverse cellular signaling pathways. PKC family members also serve as major receptors for phorbol esters, a class of tumor promoters. Each member of the PKC family has a specific expression profile and is believed to play a distinct role in cells. The protein encoded by this gene is one of the PKC family members. This kinase has been shown to be involved in many different cellular functions, such as neuron channel activation, apoptosis, cardioprotection from ischemia, heat shock response, as well as insulin exocytosis. Knockout studies in mice suggest that this kinase is important for lipopolysaccharide (LPS)-mediated signaling in activated macrophages and may also play a role in controlling anxiety-like behavior.,PRKCE,PKCE,nPKC-epsilon,Signal Transduction,G protein signaling,G2/M DNA Damage Checkpoint,Kinase,Serine/threonine kinases,Phospholipase Signaling Pathway,ErbB-HER Signaling Pathway,MAPK-Erk Signaling Pathway,Cell Biology & Developmental Biology,Apoptosis,Mitochondrial Control of Apoptosis,Inhibition of Apoptosis,TGF-b-Smad Signaling Pathway,Immunology & Inflammation,B Cell Receptor Signaling Pathway,PRKCE

Molecular Weight: 83 kDa

Gene ID: 5581

UniProt: [Q02156](#)

Pathways: [TCR Signaling](#), [EGFR Signaling Pathway](#), [Neurotrophin Signaling Pathway](#), [Positive Regulation of Peptide Hormone Secretion](#), [Activation of Innate immune Response](#), [Cellular Response to Molecule of Bacterial Origin](#), [Regulation of Actin Filament Polymerization](#), [Myometrial Relaxation and Contraction](#), [Regulation of Carbohydrate Metabolic Process](#), [Interaction of EGFR with phospholipase C-gamma](#), [Thromboxane A2 Receptor Signaling](#)

Application Details

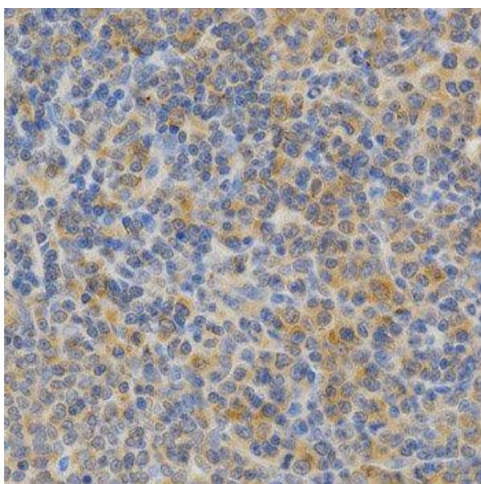
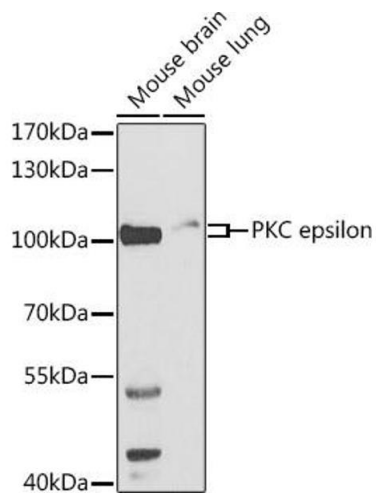
Application Notes: WB,1:500 - 1:2000,IHC,1:50 - 1:200

Restrictions: For Research Use only

Handling

Format:	Liquid
Buffer:	PBS with 0.02 % sodium azide, 50 % glycerol, pH 7.3.
Preservative:	Sodium azide
Precaution of Use:	This product contains Sodium azide: a POISONOUS AND HAZARDOUS SUBSTANCE which should be handled by trained staff only.
Handling Advice:	Avoid freeze / thaw cycles
Storage:	-20 °C
Storage Comment:	Store at -20°C. Avoid freeze / thaw cycles.

Validation report #101403 for Immunofluorescence (IF)

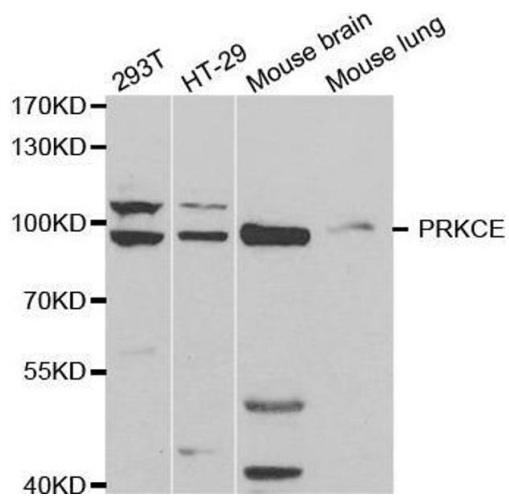


Western Blotting

Image 1. Western blot analysis of extracts of various cell lines, using PKC epsilon antibody (ABIN3022941, ABIN3022942, ABIN3022943 and ABIN6219308) at 1:500 dilution. Secondary antibody: HRP Goat Anti-Rabbit IgG (H+L) (ABIN1684268 and ABIN3020597) at 1:10000 dilution. Lysates/proteins: 25 µg per lane. Blocking buffer: 3 % nonfat dry milk in TBST.

Immunohistochemistry

Image 2.



Western Blotting

Image 3. Western blot analysis of extracts of various cell lines, using PRKCE antibody.

Please check the [product details page](#) for more images. Overall 7 images are available for ABIN3022942.