

Datasheet for ABIN3022945
anti-MAPK7 antibody (AA 1-310)

6 Images

[Go to Product page](#)

Overview

Quantity:	100 µL
Target:	MAPK7
Binding Specificity:	AA 1-310
Reactivity:	Human
Host:	Rabbit
Clonality:	Polyclonal
Conjugate:	This MAPK7 antibody is un-conjugated
Application:	Western Blotting (WB), Immunohistochemistry (IHC), Immunofluorescence (IF)

Product Details

Immunogen:	Recombinant fusion protein containing a sequence corresponding to amino acids 1-310 of human ERK5 (NP_002740.2).
Sequence:	MAEPLKEEDG EDGSAEPPGP VKAEPAAHTAA SVAAKNLALL KARSFDVTFD VGDEYEIIET IGNGAYGVVS SARRRLTGQQ VAIKKIPNAF DVVTNAKRTL RELKILKHFK HDNIIAIKDI LRPTVPYGEF KSVYVVLDM ESDLHQIIHS SQPLTLEHVR YFLYQLLRGL KYMHSAQVIH RDLKPSNLLV NENCELKIGD FGMARGLCTS PAEHQYFMTE YVATRWRAP ELMLSLHEYT QAIDLWSVGC IFGEMLARRQ LFPGKNYVHQ LQLIMMVLGT PSPAVIQAVG AERVRAIYQS LPPRQVPWE
Isotype:	IgG
Cross-Reactivity:	Human, Mouse, Rat
Characteristics:	Polyclonal Antibodies

Target Details

Target:	MAPK7
Alternative Name:	MAPK7 (MAPK7 Products)
Background:	<p>The protein encoded by this gene is a member of the MAP kinase family. MAP kinases act as an integration point for multiple biochemical signals, and are involved in a wide variety of cellular processes such as proliferation, differentiation, transcription regulation and development. This kinase is specifically activated by mitogen-activated protein kinase kinase 5 (MAP2K5/MEK5). It is involved in the downstream signaling processes of various receptor molecules including receptor type kinases, and G protein-coupled receptors. In response to extracellular signals, this kinase translocates to cell nucleus, where it regulates gene expression by phosphorylating, and activating different transcription factors. Four alternatively spliced transcript variants of this gene encoding two distinct isoforms have been reported.,MAPK7,BMK1,ERK4,ERK5,PRKM7,Epigenetics & Nuclear Signaling,Translation Control,Regulation of eIF4 and p70 S6 Kinase,Signal Transduction,G protein signaling,G2/M DNA Damage Checkpoint,Kinase,Serine/threonine kinases,mTOR Signaling Pathway,ErbB-HER Signaling Pathway,Cell Biology & Developmental Biology,Microtubules,Immunology & Inflammation,IL-6 Receptor Signaling Pathway,Neuroscience,Cardiovascular,Angiogenesis,MAPK7</p>
Molecular Weight:	50 kDa/59 kDa/73 kDa/88 kDa
Gene ID:	5598
UniProt:	Q13164
Pathways:	MAPK Signaling , Neurotrophin Signaling Pathway , Activation of Innate immune Response , cAMP Metabolic Process , Toll-Like Receptors Cascades , Negative Regulation of intrinsic apoptotic Signaling

Application Details

Application Notes:	WB,1:500 - 1:2000,IHC,1:50 - 1:200,IF,1:50 - 1:200
Restrictions:	For Research Use only

Handling

Format:	Liquid
Buffer:	PBS with 0.02 % sodium azide,50 % glycerol, pH 7.3.
Preservative:	Sodium azide

Handling

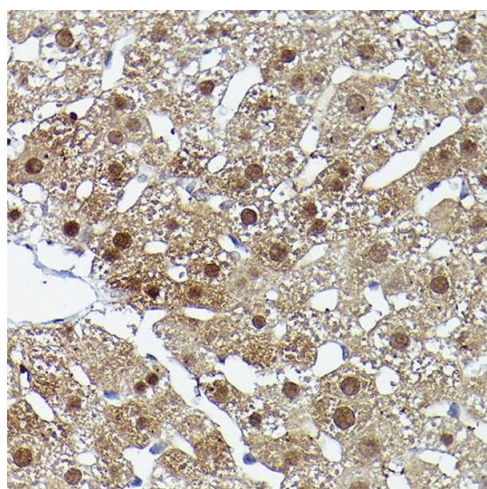
Precaution of Use: This product contains Sodium azide: a POISONOUS AND HAZARDOUS SUBSTANCE which should be handled by trained staff only.

Handling Advice: Avoid freeze / thaw cycles

Storage: -20 °C

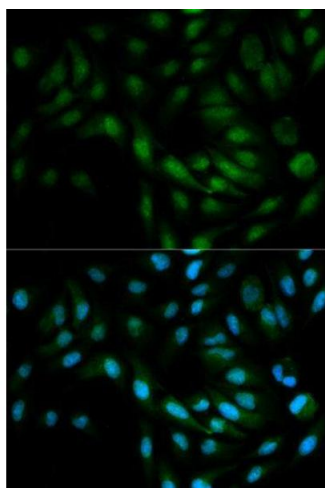
Storage Comment: Store at -20°C. Avoid freeze / thaw cycles.

Images



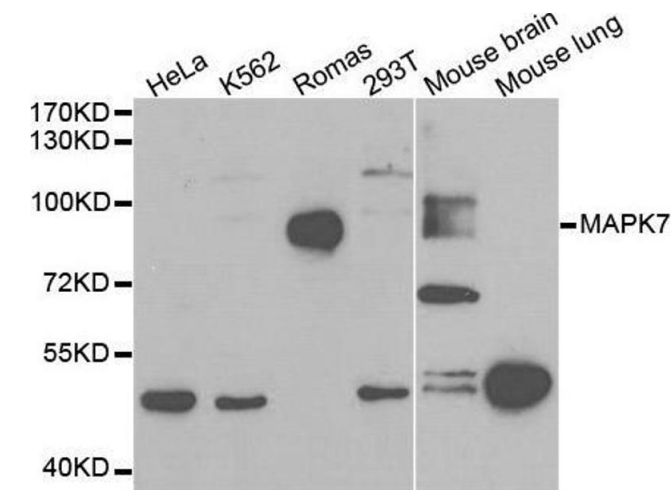
Immunohistochemistry

Image 1. Immunohistochemistry of paraffin-embedded rat liver using ERK5 Rabbit pAb (ABIN3022944, ABIN3022945, ABIN3022946 and ABIN6219309) at dilution of 1:50 (40x lens). Perform high pressure antigen retrieval with 10 mM citrate buffer pH 6.0 before commencing with IHC staining protocol.



Immunofluorescence

Image 2. Immunofluorescence analysis of MCF7 cell using MAPK7 antibody. Blue: DAPI for nuclear staining.



Western Blotting

Image 3. Western blot analysis of extracts of various cell lines, using MAPK7 antibody.

Please check the [product details page](#) for more images. Overall 6 images are available for ABIN3022945.