



[Go to Product page](#)

Datasheet for ABIN3022948

## anti-MAPK10 antibody (AA 175-464)

### 4 Images

#### Overview

Quantity:	100 µL
Target:	MAPK10
Binding Specificity:	AA 175-464
Reactivity:	Human
Host:	Rabbit
Clonality:	Polyclonal
Conjugate:	This MAPK10 antibody is un-conjugated
Application:	Western Blotting (WB)

#### Product Details

Immunogen:	Recombinant fusion protein containing a sequence corresponding to amino acids 175-464 of human JNK3 (NP_620448.1).
Sequence:	CGIKHLHSAG IHRDLKPSN IVKSDCTLK ILDFGLARTA GTSFMMPYV VTRYRPEV ILGMGYKENV DIWSVGCIMG EMVRHKILFP GRDYIDQWNK VIEQLGTPCP EFMKKLQPTV RNYVENRPKY AGLTFPKLFP DSLFPADSEH NKLKASQARD LLSKMLVIDP AKRISVDDAL QHPYINVWYD PAEVEAPPQ IYDKQLDERE HTIEEWKELI YKEVMNSEEK TKNQVVKGQP SPSGAAVNSS ESLPSSSVN DISSMSTDQT LASDTSLE ASAGPLGCCR
Isotype:	IgG
Cross-Reactivity:	Mouse
Characteristics:	Polyclonal Antibodies

## Target Details

---

Target: MAPK10

Alternative Name: MAPK10 ([MAPK10 Products](#))

Background: The protein encoded by this gene is a member of the MAP kinase family. MAP kinases act as integration points for multiple biochemical signals and are involved in a wide variety of cellular processes, such as proliferation, differentiation, transcription regulation and development. This kinase is specifically expressed in a subset of neurons in the nervous system and is activated by threonine and tyrosine phosphorylation. Targeted deletion of this gene in mice suggests that it may have a role in stress-induced neuronal apoptosis. Alternatively spliced transcript variants encoding different isoforms have been described for this gene. A recent study provided evidence for translational readthrough in this gene and expression of an additional C-terminally extended isoform via the use of an alternative in-frame translation termination codon.,JNK3,JNK3A,PRKM10,SAPK1b,p493F12,p54bSAPK,MAPK10,Cancer,Signal Transduction,G protein signaling,G2/M DNA Damage Checkpoint,Kinase,Serine/threonine kinases,ErbB-HER Signaling Pathway,MAPK-JNK Signaling Pathway,Cell Biology & Developmental Biology,Apoptosis,Mitochondrial Control of Apoptosis,Inhibition of Apoptosis,Death Receptor Signaling Pathway,TGF-b-Smad Signaling Pathway,Endocrine & Metabolism,Insulin Receptor Signaling Pathway,Immunology & Inflammation,B Cell Receptor Signaling Pathway,T Cell Receptor Signaling Pathway,NF-kB Signaling Pathway,Toll-like Receptor Signaling Pathway,Neuroscience,Neurodegenerative Diseases,Dopamine Signaling in Parkinson's Disease,MAPK10

Molecular Weight: 48 kDa/52 kDa

Gene ID: 5602

UniProt: [P53779](#)

Pathways: [MAPK Signaling](#), [WNT Signaling](#), [TLR Signaling](#), [Fc-epsilon Receptor Signaling Pathway](#), [Activation of Innate immune Response](#), [Hepatitis C](#), [Toll-Like Receptors Cascades](#)

## Application Details

---

Application Notes: WB,1:500 - 1:2000

Restrictions: For Research Use only

## Handling

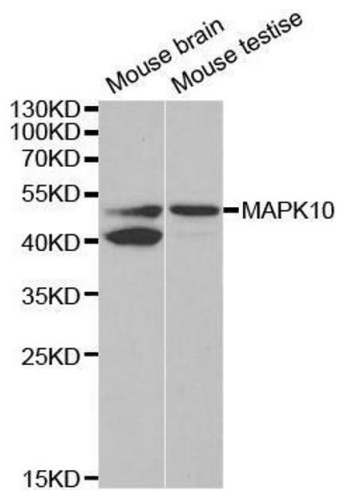
---

Format: Liquid

## Handling

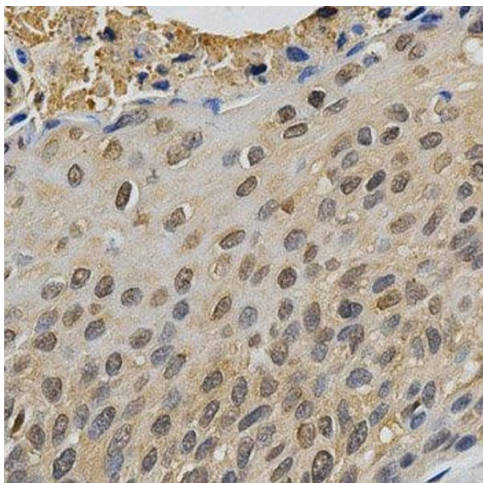
Buffer:	PBS with 0.02 % sodium azide, 50 % glycerol, pH 7.3.
Preservative:	Sodium azide
Precaution of Use:	This product contains Sodium azide: a POISONOUS AND HAZARDOUS SUBSTANCE which should be handled by trained staff only.
Handling Advice:	Avoid freeze / thaw cycles
Storage:	-20 °C
Storage Comment:	Store at -20°C. Avoid freeze / thaw cycles.

## Images



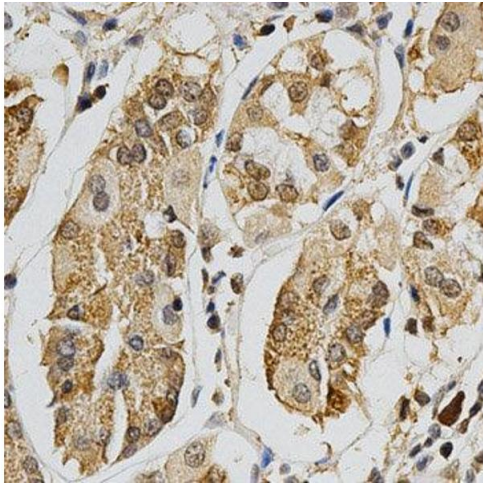
### Western Blotting

**Image 1.** Western blot analysis of extracts of various cell lines, using MAPK10 antibody.



### Immunohistochemistry

**Image 2.**



### Immunohistochemistry

**Image 3.** Immunohistochemistry of paraffin-embedded human stomach using MAPK10 antibody at dilution of 1:200 (x400 lens)

Please check the [product details page](#) for more images. Overall 4 images are available for ABIN3022948.