



[Go to Product page](#)

Datasheet for ABIN3023041
anti-LETMD1 antibody (AA 161-360)

7 Images

Overview

Quantity:	100 µL
Target:	LETMD1
Binding Specificity:	AA 161-360
Reactivity:	Human
Host:	Rabbit
Clonality:	Polyclonal
Conjugate:	This LETMD1 antibody is un-conjugated
Application:	Immunohistochemistry (IHC), Western Blotting (WB), Immunofluorescence (IF)

Product Details

Immunogen:	Recombinant fusion protein containing a sequence corresponding to amino acids 161-360 of human LETMD1 (NP_056231.3).
Sequence:	FPRQLLIRHF WTPKQQTDFL DIYHAFRKQS HPEIISYLEK VIPLISDAGL RWRLTDLCTK IQRGTHPAIH DILALRECFS NHPLGMNQLQ ALHVKALSRA MLLTSYLP PP LLRHRLKTH T TVIHQLDKAL AKLGIGQLTA QEVKSACYLR GLNSTHIGED RCRTWLGEWL QISCSLKEAE LSLLLHNVL LSTNYLGTRR
Isotype:	IgG
Cross-Reactivity:	Human, Mouse, Rat
Characteristics:	Polyclonal Antibodies

Target Details

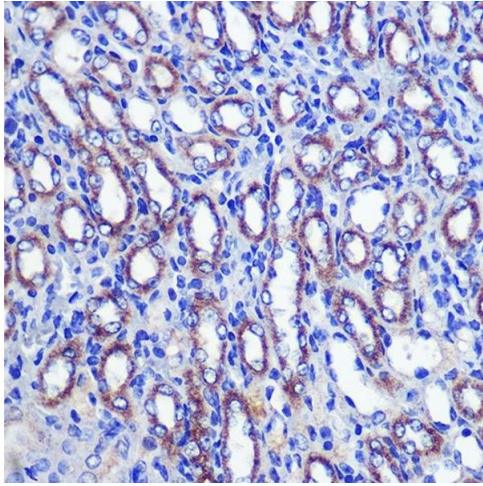
Target:	LETMD1
Alternative Name:	LETMD1 (LETMD1 Products)
Background:	This gene encodes a mitochondrial outer membrane protein. It has a potential role in tumorigenesis, which may result from negative regulation of the p53 tumor suppressor gene. Alternatively spliced transcript variants have been noted for this gene.,LETMD1,1110019013Rik,HCCR,HCCR-1,HCCR-2,HCCR1,HCCR2,HCRR-2,Cancer,Tumor biomarkers,LETMD1
Molecular Weight:	11 kDa/17 kDa/23 kDa/35 kDa/41 kDa/43 kDa
Gene ID:	25875
UniProt:	Q6P1Q0

Application Details

Application Notes:	WB,1:500 - 1:2000,IHC,1:50 - 1:200,IF,1:50 - 1:200
Restrictions:	For Research Use only

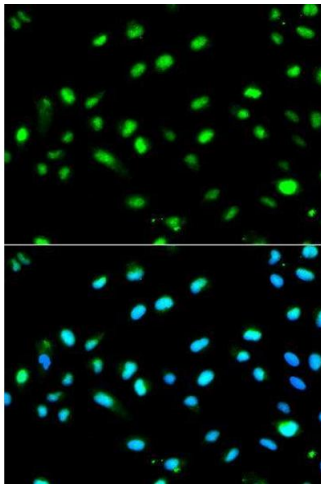
Handling

Format:	Liquid
Buffer:	PBS with 0.02 % sodium azide,50 % glycerol, pH 7.3.
Preservative:	Sodium azide
Precaution of Use:	This product contains Sodium azide: a POISONOUS AND HAZARDOUS SUBSTANCE which should be handled by trained staff only.
Handling Advice:	Avoid freeze / thaw cycles
Storage:	-20 °C
Storage Comment:	Store at -20°C. Avoid freeze / thaw cycles.



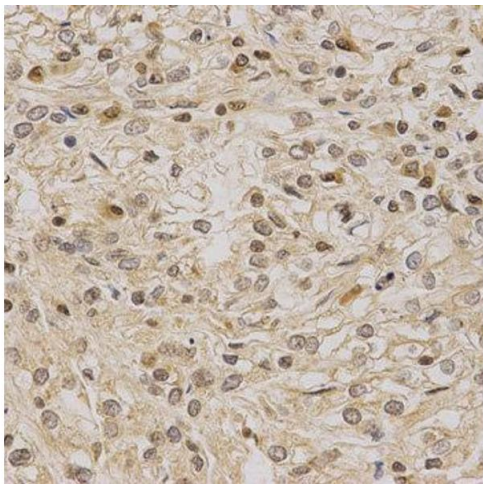
Immunohistochemistry

Image 1. Immunohistochemistry of paraffin-embedded Mouse kidney using LETMD1 Rabbit pAb (ABIN3023040, ABIN3023041, ABIN3023042, ABIN1513151 and ABIN6219360) at dilution of 1:100 (40x lens). Perform microwave antigen retrieval with 10 mM PBS buffer pH 7.2 before commencing with IHC staining protocol.



Immunofluorescence

Image 2. Immunofluorescence analysis of MCF7 cell using LETMD1 antibody. Blue: DAPI for nuclear staining.



Immunohistochemistry

Image 3. Immunohistochemistry of paraffin-embedded human kidney cancer using LETMD1 antibody at dilution of 1:200 (x400 lens)

Please check the [product details page](#) for more images. Overall 7 images are available for ABIN3023041.