



[Go to Product page](#)

Datasheet for ABIN3023044
anti-SCCPDH antibody (AA 1-270)

1 Image

Overview

Quantity:	100 µL
Target:	SCCPDH
Binding Specificity:	AA 1-270
Reactivity:	Human
Host:	Rabbit
Clonality:	Polyclonal
Conjugate:	This SCCPDH antibody is un-conjugated
Application:	Western Blotting (WB)

Product Details

Immunogen:	Recombinant fusion protein containing a sequence corresponding to amino acids 1-270 of human SCCPDH (NP_057086.2).
Sequence:	MATEQRPFHL VVFGASGFTG QFVTEEVARE QVDPERSSRL PWAVAGRSRE KLQRVLEKAA LKLGRPTLSS EVGIIICDIA NPASLDEMAK QATVVLNCGV PYRFYGEPVI KACIENGASC IDISGEPQFL ELMQLKYHEK AADKGVYIIG SSGFDSIPAD LGVIYTRNKM NGTLTAVESF LTIHSGPEGL SIHDGTWKSA IYGFQDQSNL RKLNRVSNLK PVPLIGPKLK RRWPISYCRE LKGYSIPFMG SDVSVVVRTQ RYLYENLEES
Isotype:	IgG
Cross-Reactivity:	Human, Mouse
Characteristics:	Polyclonal Antibodies

Target Details

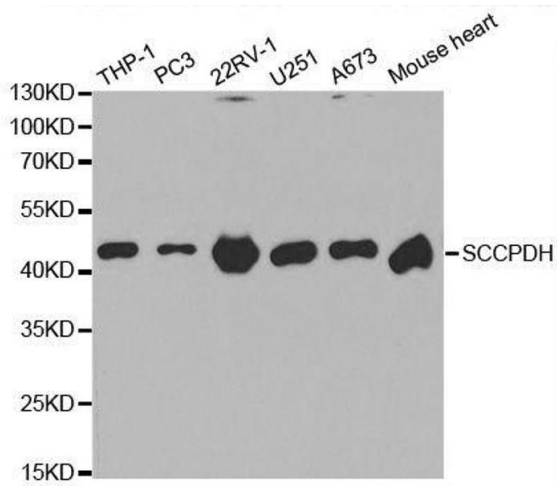
Target:	SCCPDH
Alternative Name:	SCCPDH (SCCPDH Products)
Background:	SCCPDH,CGI-49,NET11,Signal Transduction,Endocrine & Metabolism,Amino acid metabolism,SCCPDH
Molecular Weight:	47 kDa
Gene ID:	51097
UniProt:	Q8NBX0
Pathways:	SARS-CoV-2 Protein Interactome

Application Details

Application Notes:	WB,1:500 - 1:2000
Restrictions:	For Research Use only

Handling

Format:	Liquid
Buffer:	PBS with 0.02 % sodium azide,50 % glycerol, pH 7.3.
Preservative:	Sodium azide
Precaution of Use:	This product contains Sodium azide: a POISONOUS AND HAZARDOUS SUBSTANCE which should be handled by trained staff only.
Handling Advice:	Avoid freeze / thaw cycles
Storage:	-20 °C
Storage Comment:	Store at -20°C. Avoid freeze / thaw cycles.



Western Blotting

Image 1. Western blot analysis of extracts of various cell lines, using SCCPDH antibody.