

Datasheet for ABIN3023047
anti-Eppin antibody (AA 22-133)

2 Images

[Go to Product page](#)

Overview

Quantity:	100 µL
Target:	Eppin (SPINLW1)
Binding Specificity:	AA 22-133
Reactivity:	Human
Host:	Rabbit
Clonality:	Polyclonal
Conjugate:	This Eppin antibody is un-conjugated
Application:	Western Blotting (WB)

Product Details

Immunogen:	Recombinant fusion protein containing a sequence corresponding to amino acids 22-133 of human EPPIN (NP_065131.1).
Sequence:	PGLTDWLFPR RCPKIREECE FQERDVCTKD RQCQDNKKCC VFSCGKKCLD LKQDVCEMPK ETGPCLAYFL HWWYDKKDNT CSMFVYGGCQ GNNNNFQSKA NCLNTCKNKR FP
Isotype:	IgG
Cross-Reactivity:	Human, Mouse, Rat
Characteristics:	Polyclonal Antibodies
Purification:	Affinity purification

Target Details

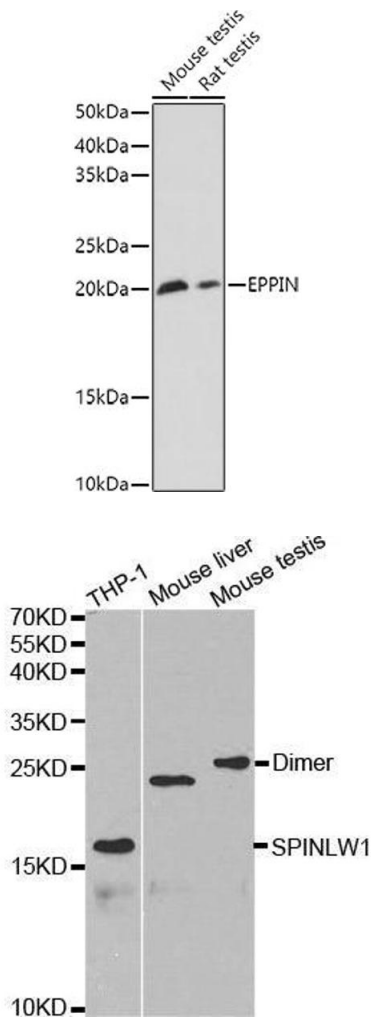
Target:	Eppin (SPINLW1)
Alternative Name:	EPPIN (SPINLW1 Products)
Background:	<p>This gene encodes an epididymal protease inhibitor, which contains both kunitz-type and WAP-type four-disulfide core (WFDC) protease inhibitor consensus sequences. Most WFDC genes are localized to chromosome 20q12-q13 in two clusters: centromeric and telomeric. This gene is a member of the WFDC gene family and belongs to the telomeric cluster. The protein can inhibit human sperm motility and exhibits antimicrobial activity against E. coli, and polymorphisms in this gene are associated with male infertility. Read-through transcription also exists between this gene and the downstream WFDC6 (WAP four-disulfide core domain 6) gene. Two transcript variants encoding different isoforms have been found for this gene.,EPPIN,CT71,CT72,SPINLW1,WAP7,WFDC7,dJ461P17.2,eppin,Cell Biology & Developmental Biology,Ubiquitin,EPPIN</p>
Molecular Weight:	13 kDa/15 kDa/20 kDa
Gene ID:	57119
UniProt:	O95925

Application Details

Application Notes:	WB,1:500 - 1:2000
Restrictions:	For Research Use only

Handling

Format:	Liquid
Buffer:	PBS with 0.02 % sodium azide,50 % glycerol, pH 7.3.
Preservative:	Sodium azide
Precaution of Use:	This product contains Sodium azide: a POISONOUS AND HAZARDOUS SUBSTANCE which should be handled by trained staff only.
Handling Advice:	Avoid freeze / thaw cycles
Storage:	-20 °C
Storage Comment:	Store at -20°C. Avoid freeze / thaw cycles.



Western Blotting

Image 1. Western blot analysis of extracts of various cell lines, using EPPIN antibody (ABIN3023046, ABIN3023047, ABIN3023048 and ABIN6219363) at 1:1000 dilution. Secondary antibody: HRP Goat Anti-Rabbit IgG (H+L) (ABIN1684268 and ABIN3020597) at 1:10000 dilution. Lysates/proteins: 25 µg per lane. Blocking buffer: 3 % nonfat dry milk in TBST. Detection: ECL Basic Kit (RM00020). Exposure time: 180s.

Western Blotting

Image 2. Western blot analysis of extracts of various cell lines, using SPINLW1 antibody.