



[Go to Product page](#)

Datasheet for ABIN3023053
anti-ELSPBP1 antibody (AA 1-223)

2 Images

Overview

Quantity:	100 µL
Target:	ELSPBP1
Binding Specificity:	AA 1-223
Reactivity:	Human
Host:	Rabbit
Clonality:	Polyclonal
Conjugate:	This ELSPBP1 antibody is un-conjugated
Application:	Western Blotting (WB)

Product Details

Immunogen:	Recombinant fusion protein containing a sequence corresponding to amino acids 1-223 of human ELSPBP1 (NP_071425.3).
Sequence:	MTRWSSYLLG WTTFLLYSYE SSGGMHEECV FPFTYKGSVY FTCTHIHSLP PWCATRAVYN GQWKYQCSED YPRCIFPIY RGKAYNSCIS QGSFLGSLWC SVTSVFDEKQ QWKFCETNEY GGNSLRKPCI FPSIYRNNVV SDCMEDES NK LWCPTTENMD KDGKWSFCAD TRISALVPGF PCHF PFNYKN KNYFNCTNEG SKENLVWCAT SYNYDQDHTW VYC
Isotype:	IgG
Cross-Reactivity:	Human
Characteristics:	Polyclonal Antibodies
Purification:	Affinity purification

Target Details

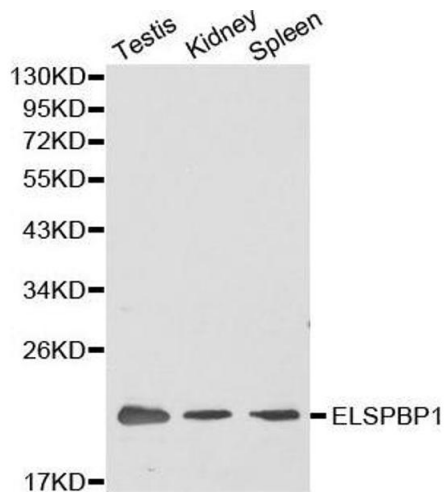
Target:	ELSPBP1
Alternative Name:	ELSPBP1 (ELSPBP1 Products)
Background:	The protein encoded by this gene belongs to the sperm-coating protein family of epididymal origin. This protein and its canine homolog are the first known examples of proteins with four tandemly arranged fibronectin type 2 (Fn2) domains in the Fn2-module protein family.,ELSPBP1,E12,EDDM12,EL149,HE12,Cell Biology & Developmental Biology,ELSPBP1
Molecular Weight:	26 kDa
Gene ID:	64100
UniProt:	Q96BH3

Application Details

Application Notes:	WB,1:500 - 1:2000
Restrictions:	For Research Use only

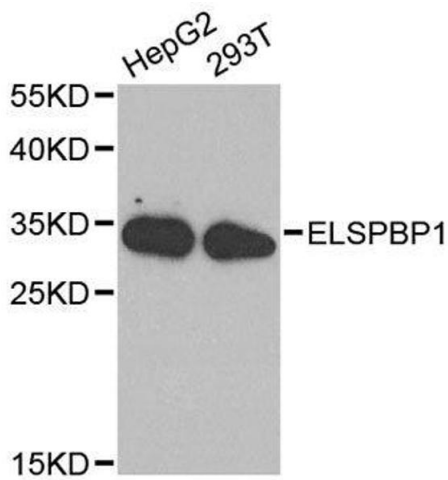
Handling

Format:	Liquid
Buffer:	PBS with 0.02 % sodium azide,50 % glycerol, pH 7.3.
Preservative:	Sodium azide
Precaution of Use:	This product contains Sodium azide: a POISONOUS AND HAZARDOUS SUBSTANCE which should be handled by trained staff only.
Handling Advice:	Avoid freeze / thaw cycles
Storage:	-20 °C
Storage Comment:	Store at -20°C. Avoid freeze / thaw cycles.



Western Blotting

Image 1. Western blot analysis of extracts of various cell lines, using ELSPBP1 antibody.



Western Blotting

Image 2. Western blot analysis of extracts of various cell lines, using ELSPBP1 antibody.