



[Go to Product page](#)

Datasheet for ABIN3023056
anti-KBTBD3 antibody (AA 410-607)

2 Images

Overview

Quantity:	100 µL
Target:	KBTBD3
Binding Specificity:	AA 410-607
Reactivity:	Mouse
Host:	Rabbit
Clonality:	Polyclonal
Conjugate:	This KBTBD3 antibody is un-conjugated
Application:	Western Blotting (WB)

Product Details

Immunogen:	Recombinant fusion protein containing a sequence corresponding to amino acids 410-607 of mouse KBTBD3 (NP_081238.2).
Sequence:	GSQDIKSLLD VESYNPLSRE WTSVSPLPRG IYYPEASACQ NIIYVLGSEV EIADAFNPSL DCFFKYNATT DQWSELVAEF GQFFHATLIK AVPVNCTLYI CDLSTYKVYS FCPDTCVWKG EGSFECAGFN AGAIGIEDKI YILGGDYAPD EITDEVQVYH SSRSEWEEVS PMPRALTEFY CQVIQFNKYR DPWYSNHF
Isotype:	IgG
Cross-Reactivity:	Human
Characteristics:	Polyclonal Antibodies

Target Details

Target:	KBTBD3
Alternative Name:	KBTBD3 (KBTBD3 Products)
Background:	KBTBD3,BKLHD3,Cell Biology & Developmental Biology,KBTBD3
Molecular Weight:	69 kDa
Gene ID:	69149

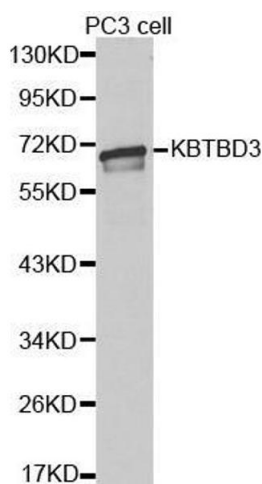
Application Details

Application Notes:	WB,1:500 - 1:2000
Restrictions:	For Research Use only

Handling

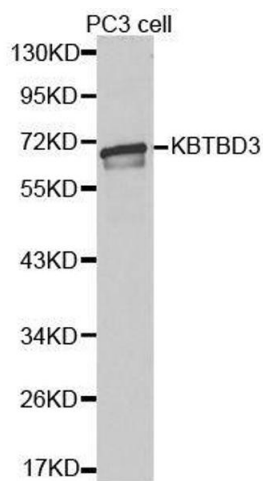
Format:	Liquid
Buffer:	PBS with 0.02 % sodium azide,50 % glycerol, pH 7.3.
Preservative:	Sodium azide
Precaution of Use:	This product contains Sodium azide: a POISONOUS AND HAZARDOUS SUBSTANCE which should be handled by trained staff only.
Handling Advice:	Avoid freeze / thaw cycles
Storage:	-20 °C
Storage Comment:	Store at -20°C. Avoid freeze / thaw cycles.

Validation report #101403 for Immunofluorescence (IF)



Western Blotting

Image 1. Western blot analysis of extracts of PC3 cell lines, using KBTBD3 antibody.



Western Blotting

Image 2. Western blot analysis of extracts of PC-3 cells, using KBTBD3 antibody.