



[Go to Product page](#)

Datasheet for ABIN3023059  
**anti-SPDYA antibody (AA 1-313)**

3 Images

Overview

Quantity:	100 µL
Target:	SPDYA
Binding Specificity:	AA 1-313
Reactivity:	Human
Host:	Rabbit
Clonality:	Polyclonal
Conjugate:	This SPDYA antibody is un-conjugated
Application:	Western Blotting (WB)

Product Details

Immunogen:	Recombinant fusion protein containing a sequence corresponding to amino acids 1-313 of human SPDYA (NP_877433.2).
Sequence:	MRHNQMCET PPTVTVVYVKS GSNRSHQPKK PITLKRICK DNWQAFEKNT HNNNKSRRPK GPCLVIQRQD MTAFFKLFDD DLIQDFLWMD CCKIADKYL LAMTFVYFKR AKFTISEHTR INFFIALYLA NTVEEDEEET KYEIFPWALG KNWRKLFPNF LKLRDQLWDR IDYRAIVSRR CCEEVMAIAP THYIWQRERS VHHSGAVRNY NRDEVQLPRG PSATPVDCSL CGKKRRYVRL GLSSSSSLSS HTAGVTEKHS QDSYNSLSMD IIGDPSQAYT GSEVNDHQS NKGKKTNFLK KDKSMEWFTG SEE
Isotype:	IgG
Cross-Reactivity:	Human, Mouse, Rat
Characteristics:	Polyclonal Antibodies

## Target Details

---

Target:	SPDYA
Alternative Name:	SPDYA ( <a href="#">SPDYA Products</a> )
Background:	Regulates the G1/S phase transition of the cell cycle by binding and activating CDK1 and CDK2. Contributes to CDK2 activation without promoting CDK2 phosphorylation, by inducing a conformation change of the CDK2 T-loop that obstructs the substrate-binding cleft prior to kinase activation. Mediates cell survival during the DNA damage process through activation of CDK2,SPDYA,RINGO3,RINGOA,SPDY1,SPY1,Epigenetics & Nuclear Signaling,DNA Damage & Repair,Kinase,Cell Biology & Developmental Biology,Apoptosis,Cell Cycle,SPDYA
Molecular Weight:	33 kDa/36 kDa
Gene ID:	245711
UniProt:	<a href="#">Q5MJ70</a>

## Application Details

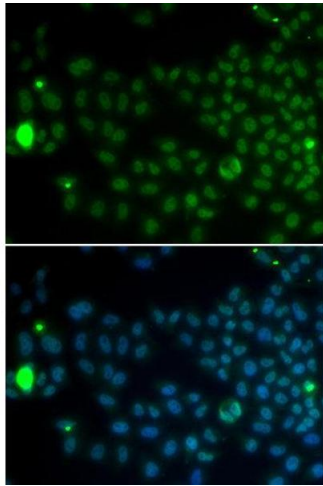
---

Application Notes:	WB,1:500 - 1:2000
Restrictions:	For Research Use only

## Handling

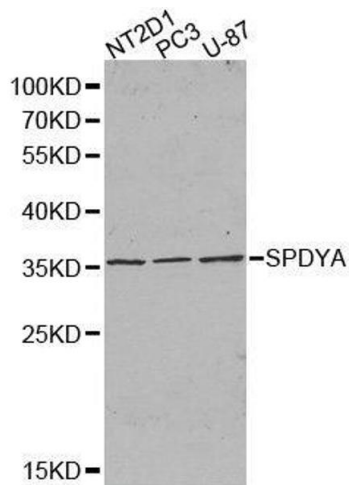
---

Format:	Liquid
Buffer:	PBS with 0.02 % sodium azide,50 % glycerol, pH 7.3.
Preservative:	Sodium azide
Precaution of Use:	This product contains Sodium azide: a POISONOUS AND HAZARDOUS SUBSTANCE which should be handled by trained staff only.
Handling Advice:	Avoid freeze / thaw cycles
Storage:	-20 °C
Storage Comment:	Store at -20°C. Avoid freeze / thaw cycles.



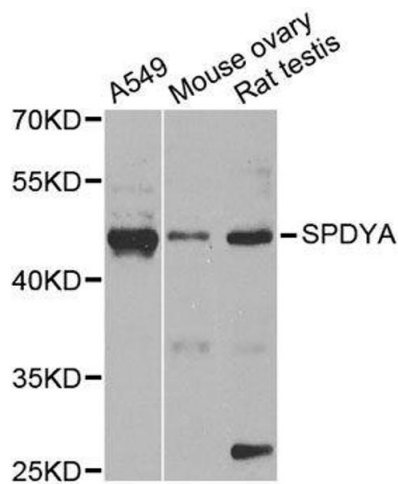
### Immunofluorescence

**Image 1.** Immunofluorescence analysis of MCF7 cell using SPDYA antibody. Blue: DAPI for nuclear staining.



### Western Blotting

**Image 2.** Western blot analysis of extracts of various cell lines, using SPDYA antibody.



### Western Blotting

**Image 3.** Western blot analysis of extracts of various cell lines, using SPDYA antibody.