

Datasheet for ABIN3023079
anti-CYP2E1 antibody (AA 234-493)

4 Images

1 Publication

[Go to Product page](#)

Overview

Quantity:	100 µL
Target:	CYP2E1
Binding Specificity:	AA 234-493
Reactivity:	Human
Host:	Rabbit
Clonality:	Polyclonal
Conjugate:	This CYP2E1 antibody is un-conjugated
Application:	Western Blotting (WB), Immunohistochemistry (IHC)

Product Details

Immunogen:	Recombinant fusion protein containing a sequence corresponding to amino acids 234-493 of human CYP2E1 (NP_000764.1).
Sequence:	KVIKNVAEVK EYVSERVKEH HQSLDPNCPR DLTDCLLVEM EKEKHSERL YTM DGITVTV ADLFFAGTET TSTTLRYGLL ILMKYPEIEE KLHEEIDRVI GPSRIPAIDK RQEMPYMDAV VHEIQRFITL VPSNLPHEAT RDTIFRGYLI PKGTWVPTL DSVLYDNQEF PDPEKFKPEH FLNENGKFKY SDYFKPFSTG KRV CAGEGLA RMELFLLLCA ILQHFNLKPL VDPKDIDLSP IHIGFGCIPP RYKLCVIPRS
Isotype:	IgG
Cross-Reactivity:	Human, Mouse, Rat
Characteristics:	Polyclonal Antibodies
Purification:	Affinity purification

Target Details

Target:	CYP2E1
Alternative Name:	CYP2E1 (CYP2E1 Products)
Background:	<p>This gene encodes a member of the cytochrome P450 superfamily of enzymes. The cytochrome P450 proteins are monooxygenases which catalyze many reactions involved in drug metabolism and synthesis of cholesterol, steroids and other lipids. This protein localizes to the endoplasmic reticulum and is induced by ethanol, the diabetic state, and starvation. The enzyme metabolizes both endogenous substrates, such as ethanol, acetone, and acetal, as well as exogenous substrates including benzene, carbon tetrachloride, ethylene glycol, and nitrosamines which are premutagens found in cigarette smoke. Due to its many substrates, this enzyme may be involved in such varied processes as gluconeogenesis, hepatic cirrhosis, diabetes, and cancer.</p> <p>CYP2E1,CPE1,CYP2E,P450-J,P450C2E,Cancer,Signal Transduction,Endocrine & Metabolism,Mitochondrial metabolism,Cytochromes,Lipid Metabolism,Cytochromes,Lipases,Drug metabolism,Cardiovascular,Lipids,CYP2E1</p>
Molecular Weight:	56 kDa
Gene ID:	1571
UniProt:	P05181

Application Details

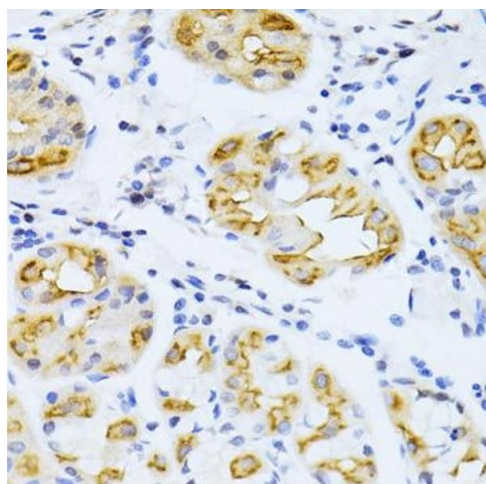
Application Notes:	WB,1:500 - 1:2000,IHC,1:50 - 1:100
Restrictions:	For Research Use only

Handling

Format:	Liquid
Buffer:	PBS with 0.02 % sodium azide,50 % glycerol, pH 7.3.
Preservative:	Sodium azide
Precaution of Use:	This product contains Sodium azide: a POISONOUS AND HAZARDOUS SUBSTANCE which should be handled by trained staff only.
Handling Advice:	Avoid freeze / thaw cycles
Storage:	-20 °C
Storage Comment:	Store at -20°C. Avoid freeze / thaw cycles.

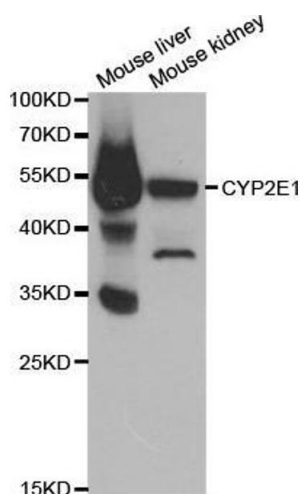
Product cited in: Zhou, Jiang, Dong, Yan, You, Su, Gong: "The proteins interacting with C-terminal of μ receptor are identified by bacterial two-hybrid system from brain cDNA library in morphine-dependent rats." in: **Life sciences**, Vol. 143, pp. 156-67, (2016) ([PubMed](#)).

Images



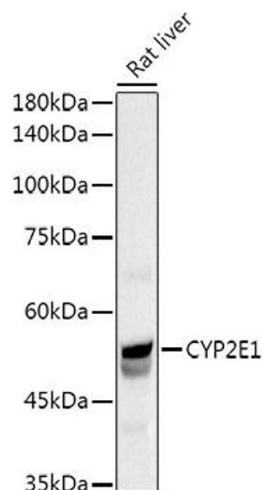
Immunohistochemistry

Image 1. Immunohistochemistry of paraffin-embedded human stomach using CYP2E1 antibody (ABIN3023078, ABIN3023079, ABIN3023080 and ABIN6219379) at dilution of 1:100 (40x lens). Perform microwave antigen retrieval with 10 mM PBS buffer pH 7.2 before commencing with IHC staining protocol.



Western Blotting

Image 2. Western blot analysis of extracts of various cell lines, using CYP2E1 antibody.



Western Blotting

Image 3. Western blot analysis of extracts of Rat liver, using CYP2E1 Rabbit pAb antibody (ABIN3023078, ABIN3023079, ABIN3023080 and ABIN6219379) at 1:1000 dilution. Secondary antibody: HRP Goat Anti-Rabbit IgG (H+L) (ABIN1684268 and ABIN3020597) at 1:10000 dilution. Lysates/proteins: 25 μ g per lane. Blocking buffer: 3 % nonfat dry milk in TBST. Detection: ECL Basic Kit (RM00020). Exposure time: 0.5s.

Images

Please check the [product details page](#) for more images. Overall 4 images are available for ABIN3023079.