

Datasheet for ABIN3023100  
**anti-HLA-A antibody (AA 35-285)**

## 6 Images

[Go to Product page](#)

## Overview

Quantity:	100 µL
Target:	HLA-A
Binding Specificity:	AA 35-285
Reactivity:	Human
Host:	Rabbit
Clonality:	Polyclonal
Conjugate:	This HLA-A antibody is un-conjugated
Application:	Western Blotting (WB), Immunohistochemistry (IHC)

## Product Details

Immunogen:	Recombinant fusion protein containing a sequence corresponding to amino acids 35-285 of human HLA-A (NP_001229687.1).
Sequence:	SVSRPGRGEP RFIAGVYVDD TQFVRFDSDA ASQKMEPRAP WIEQEGPEYW DQETRNMKAH SQTDRANLGT LRGYYNQSED GSHTIQIMYG CDVGPDGRFL RGYRQDAYDG KDYIALNEDL RSWTAADMAA QITKRKWEAV HAAEQRRVYL EGRCVDGLRR YLENGKETLQ RTDPPKTHMT HHPISDHEAT LRCWALGFYP AEITLTWQRD GEDQTQDTEL VETRPAGDGT FQKWAAVVVP SGEEQRYTCH V
Isotype:	IgG
Cross-Reactivity:	Human, Mouse, Rat
Characteristics:	Polyclonal Antibodies
Purification:	Affinity purification

## Target Details

Target:	HLA-A
Alternative Name:	HLA-A ( <a href="#">HLA-A Products</a> )
Background:	<p>HLA-A belongs to the HLA class I heavy chain paralogues. This class I molecule is a heterodimer consisting of a heavy chain and a light chain (beta-2 microglobulin). The heavy chain is anchored in the membrane. Class I molecules play a central role in the immune system by presenting peptides derived from the endoplasmic reticulum lumen. They are expressed in nearly all cells. The heavy chain is approximately 45 kDa and its gene contains 8 exons. Exon 1 encodes the leader peptide, exons 2 and 3 encode the alpha1 and alpha2 domains, which both bind the peptide, exon 4 encodes the alpha3 domain, exon 5 encodes the transmembrane region, and exons 6 and 7 encode the cytoplasmic tail. Polymorphisms within exon 2 and exon 3 are responsible for the peptide binding specificity of each class one molecule. Typing for these polymorphisms is routinely done for bone marrow and kidney transplantation. Hundreds of HLA-A alleles have been described.,HLAA,HLA-A,Immunology &amp; Inflammation,HLA-A</p>
Molecular Weight:	40 kDa
Gene ID:	3105
UniProt:	<a href="#">P04439</a> , <a href="#">P30443</a>
Pathways:	<a href="#">TCR Signaling</a> , <a href="#">Regulation of Leukocyte Mediated Immunity</a> , <a href="#">Positive Regulation of Immune Effector Process</a> , <a href="#">Cancer Immune Checkpoints</a> , <a href="#">Human Leukocyte Antigen (HLA) in Adaptive Immune Response</a>

## Application Details

Application Notes:	WB,1:500 - 1:2000,IHC,1:50 - 1:200
Restrictions:	For Research Use only

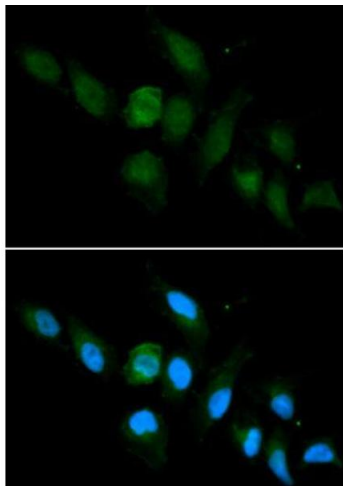
## Handling

Format:	Liquid
Buffer:	PBS with 0.02 % sodium azide,50 % glycerol, pH 7.3.
Preservative:	Sodium azide
Precaution of Use:	This product contains Sodium azide: a POISONOUS AND HAZARDOUS SUBSTANCE which should be handled by trained staff only.
Handling Advice:	Avoid freeze / thaw cycles

Handling

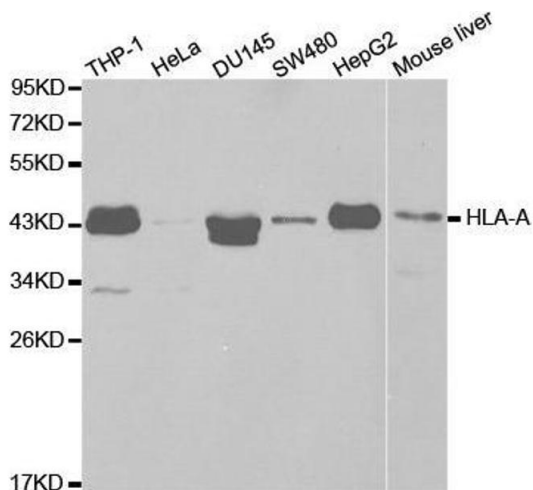
Storage:	-20 °C
Storage Comment:	Store at -20°C. Avoid freeze / thaw cycles.

Images



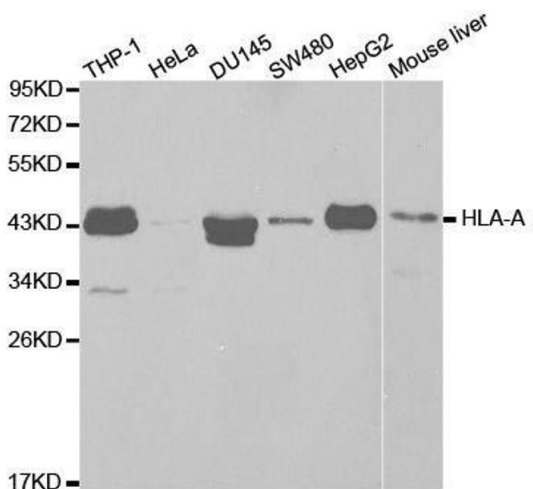
**Immunofluorescence**

**Image 1.** Immunofluorescence analysis of U2OS cell using HLA-A antibody. Blue: DAPI for nuclear staining



**Western Blotting**

**Image 2.** Western blot analysis of extracts of various cell lines, using HLA-A antibody.



**Western Blotting**

**Image 3.** Western blot analysis of extracts of various cell lines, using HLA-A antibody.

Please check the [product details page](#) for more images. Overall 6 images are available for ABIN3023100.