

Datasheet for ABIN3023136  
**anti-NPPB antibody (AA 1-134)**[Go to Product page](#)

## 8 Images

## Overview

Quantity:	100 µL
Target:	NPPB
Binding Specificity:	AA 1-134
Reactivity:	Human
Host:	Rabbit
Clonality:	Polyclonal
Conjugate:	This NPPB antibody is un-conjugated
Application:	Western Blotting (WB), Immunofluorescence (IF)

## Product Details

Immunogen:	Recombinant fusion protein containing a sequence corresponding to amino acids 1-134 of human BNP (NP_002512.1).
Sequence:	MDPQTAPSRA LLLLLFLHLA FLGGRSHPLG SPGSASDLET SGLQEQRNHL QGKLSELQVE QTSLEPLQES PRPTGVWKS R EVATEGIRGH RKMVLYTLRA PRSPKMVQGS GCFGRKMDRI SSSSGLGCKV LRRH
Isotype:	IgG
Cross-Reactivity:	Human, Mouse, Rat
Characteristics:	Polyclonal Antibodies

## Target Details

Target:	NPPB
---------	------

## Target Details

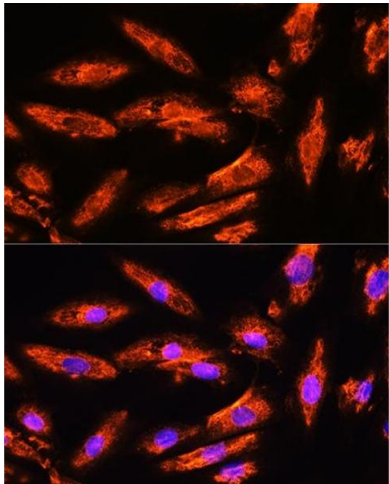
Alternative Name:	NPPB ( <a href="#">NPPB Products</a> )
Background:	This gene is a member of the natriuretic peptide family and encodes a secreted protein which functions as a cardiac hormone. The protein undergoes two cleavage events, one within the cell and a second after secretion into the blood. The protein's biological actions include natriuresis, diuresis, vasorelaxation, inhibition of renin and aldosterone secretion, and a key role in cardiovascular homeostasis. A high concentration of this protein in the bloodstream is indicative of heart failure. The protein also acts as an antimicrobial peptide with antibacterial and antifungal activity. Mutations in this gene have been associated with postmenopausal osteoporosis.,NPPB,BNP,Signal Transduction,Cell Biology & Developmental Biology,Growth factor,Cardiovascular,Angiogenesis,Blood,Blood Pressure regulation,Heart,Hypertrophy,NPPB
Molecular Weight:	14 kDa
Gene ID:	4879
UniProt:	<a href="#">P16860</a>
Pathways:	<a href="#">Hormone Activity</a>

## Application Details

Application Notes:	WB,1:500 - 1:2000,IF,1:50 - 1:200
Restrictions:	For Research Use only

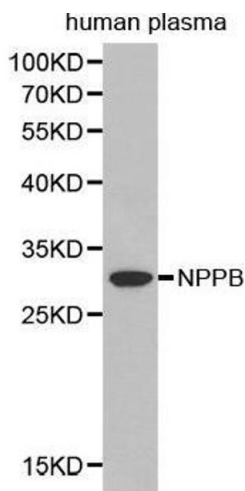
## Handling

Format:	Liquid
Buffer:	PBS with 0.02 % sodium azide,50 % glycerol, pH 7.3.
Preservative:	Sodium azide
Precaution of Use:	This product contains Sodium azide: a POISONOUS AND HAZARDOUS SUBSTANCE which should be handled by trained staff only.
Handling Advice:	Avoid freeze / thaw cycles
Storage:	-20 °C
Storage Comment:	Store at -20°C. Avoid freeze / thaw cycles.



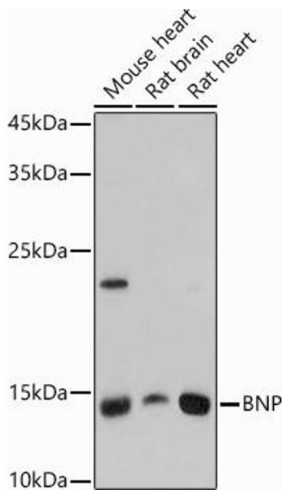
### Immunofluorescence

**Image 1.** Immunofluorescence analysis of H9C2 cells using BNP Rabbit pAb (ABIN3023135, ABIN3023136, ABIN3023137, ABIN1513273 and ABIN6219406) at dilution of 1:100. Blue: DAPI for nuclear staining.



### Western Blotting

**Image 2.**



### Western Blotting

**Image 3.** Western blot analysis of extracts of various cell lines, using BNP antibody (ABIN3023135, ABIN3023136, ABIN3023137, ABIN1513273 and ABIN6219406) at 1:1000 dilution. Secondary antibody: HRP Goat Anti-Rabbit IgG (H+L) (ABIN1684268 and ABIN3020597) at 1:10000 dilution. Lysates/proteins: 25 µg per lane. Blocking buffer: 3 % nonfat dry milk in TBST. Detection: ECL Basic Kit (RM00020). Exposure time: 15s.

Please check the [product details page](#) for more images. Overall 8 images are available for ABIN3023136.