



[Go to Product page](#)

Datasheet for ABIN3023190  
**anti-DLGAP5 antibody (AA 547-846)**

7 Images

Overview

Quantity:	100 µL
Target:	DLGAP5
Binding Specificity:	AA 547-846
Reactivity:	Human
Host:	Rabbit
Clonality:	Polyclonal
Conjugate:	This DLGAP5 antibody is un-conjugated
Application:	Western Blotting (WB), Immunofluorescence (IF)

Product Details

Immunogen:	Recombinant fusion protein containing a sequence corresponding to amino acids 547-846 of human DLGAP5 (NP_055565.3).
Sequence:	KNVFRKKVVS GIASKPKQDD AGRIAARNRL AAIKNAMRER IRQECAETA VSVIPKEVDK IVFDAGFFRV ESPVKLFSGS SVSSEGPSQR LGTPKSVNKA VSQSRNEMGI PQQTTSPENA GPQNTKSEHV KKTFLFSIPE SRSSIEDAQG PGLPDLIEEN HVVNKTDLKV DCLSSERMSL PLLAGGVADD INTNKKEGIS DVVEGMELNS SITSQDVLMS SPEKNTASQN SILEEGETKI SQSELFDNKS LTTECHLLDS PGLNCSNPFT QLERRHQEHA RHISFGGNLI TFSPLQPGEF
Isotype:	IgG
Cross-Reactivity:	Human
Characteristics:	Polyclonal Antibodies
Purification:	Affinity purification

## Target Details

---

Target:	DLGAP5
Alternative Name:	DLGAP5 ( <a href="#">DLGAP5 Products</a> )
Background:	Potential cell cycle regulator that may play a role in carcinogenesis of cancer cells. Mitotic phosphoprotein regulated by the ubiquitin-proteasome pathway. Key regulator of adherens junction integrity and differentiation that may be involved in CDH1-mediated adhesion and signaling in epithelial cells.,DLGAP5,DLG7,HURP,Cancer,Cell Biology & Developmental Biology,Cell Cycle,DLGAP5
Molecular Weight:	85 kDa/94 kDa/95 kDa
Gene ID:	9787
UniProt:	<a href="#">Q15398</a>
Pathways:	<a href="#">M Phase</a>

## Application Details

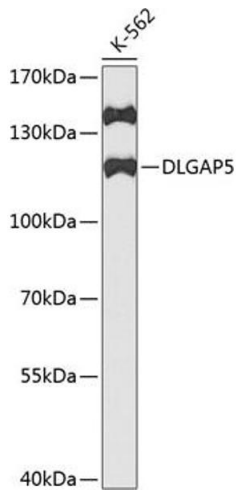
---

Application Notes:	WB,1:500 - 1:2000,IF,1:50 - 1:200
Restrictions:	For Research Use only

## Handling

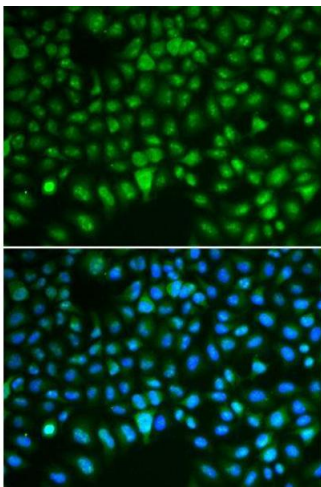
---

Format:	Liquid
Buffer:	PBS with 0.02 % sodium azide,50 % glycerol, pH 7.3.
Preservative:	Sodium azide
Precaution of Use:	This product contains Sodium azide: a POISONOUS AND HAZARDOUS SUBSTANCE which should be handled by trained staff only.
Handling Advice:	Avoid freeze / thaw cycles
Storage:	-20 °C
Storage Comment:	Store at -20°C. Avoid freeze / thaw cycles.



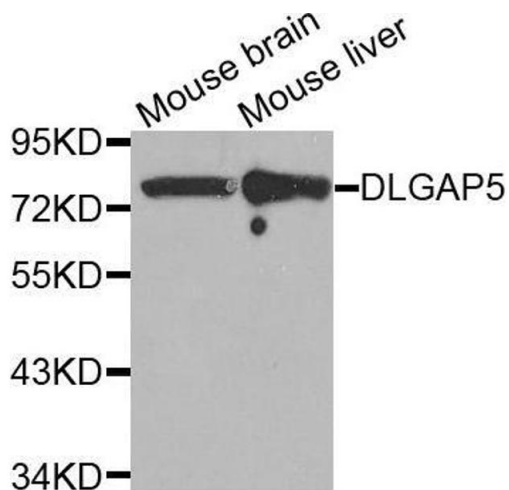
### Western Blotting

**Image 1.** Western blot analysis of extracts of K562 cells, using DLG antibody (ABIN3023189, ABIN3023190, ABIN3023191 and ABIN6219430) at 1:1000 dilution. Secondary antibody: HRP Goat Anti-Rabbit IgG (H+L) (ABIN1684268 and ABIN3020597) at 1:10000 dilution. Lysates/proteins: 25 µg per lane. Blocking buffer: 3 % nonfat dry milk in TBST. Detection: ECL Basic Kit (RM00020). Exposure time: 90s.



### Immunofluorescence

**Image 2.**



### Western Blotting

**Image 3.** Western blot analysis of extracts of various tissues, using DLGAP5 antibody.

Please check the [product details page](#) for more images. Overall 7 images are available for ABIN3023190.