



[Go to Product page](#)

Datasheet for ABIN3023196
anti-RAPGEF3 antibody (AA 1-200)

3 Images

Overview

Quantity:	100 µL
Target:	RAPGEF3
Binding Specificity:	AA 1-200
Reactivity:	Human
Host:	Rabbit
Clonality:	Polyclonal
Conjugate:	This RAPGEF3 antibody is un-conjugated
Application:	Western Blotting (WB)

Product Details

Immunogen:	Recombinant fusion protein containing a sequence corresponding to amino acids 1-200 of human Epac1/Epac1/RAPGEF3 (NP_001092002.1).
Sequence:	MVLRRMHRPR SCSYQLLLEH QRPSCIQLR WTPLTNSEES LDFSESLEQA STERVLRAGR QLHRHLLATC PNLIRDRKYH LRLYRQCCSG RELVDGILAL GLGVHSRSQV VGICQVLLDE GALCHVKHDW AFQDRDAQFY RFPGPEPEPV GTHEMEEELA EAVALLSQRG PDALLTVALR KPPGQRTDEE LDLIFEELLH
Isotype:	IgG
Cross-Reactivity:	Human, Mouse
Characteristics:	Polyclonal Antibodies

Target Details

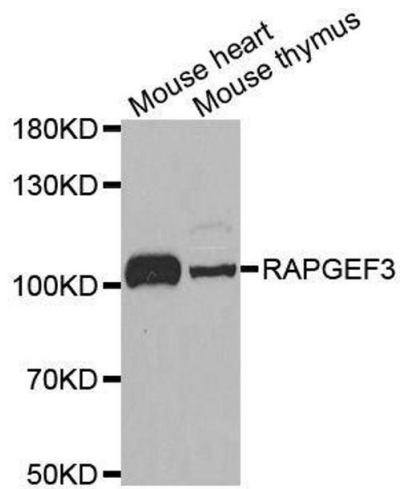
Target:	RAPGEF3
Alternative Name:	RAPGEF3 (RAPGEF3 Products)
Background:	<p>Guanine nucleotide exchange factor (GEF for RAP1A and RAP2A small GTPases that is activated by binding cAMP. Through simultaneous binding of PDE3B to RAPGEF3 and PIK3R6 is assembled in a signaling complex in which it activates the PI3K gamma complex and which is involved in angiogenesis. Plays a role in the modulation of the cAMP-induced dynamic control of endothelial barrier function through a pathway that is independent on Rho-mediated signaling. Required for the actin rearrangement at cell-cell junctions, such as stress fibers and junctional actin.,RAPGEF3,CAMP-GEFI,EPAC,EPAC1,HSU79275,bcm910,Signal Transduction,G protein signaling,G2/M DNA Damage Checkpoint,MAPK-Erk Signaling Pathway,Endocrine & Metabolism,Immunology & Inflammation,RAPGEF3</p>
Molecular Weight:	66 kDa/99 kDa/103 kDa
Gene ID:	10411
UniProt:	O95398
Pathways:	cAMP Metabolic Process

Application Details

Application Notes:	WB,1:500 - 1:2000
Restrictions:	For Research Use only

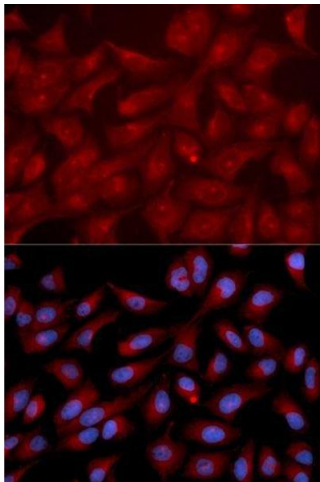
Handling

Format:	Liquid
Buffer:	PBS with 0.02 % sodium azide,50 % glycerol, pH 7.3.
Preservative:	Sodium azide
Precaution of Use:	This product contains Sodium azide: a POISONOUS AND HAZARDOUS SUBSTANCE which should be handled by trained staff only.
Handling Advice:	Avoid freeze / thaw cycles
Storage:	-20 °C
Storage Comment:	Store at -20°C. Avoid freeze / thaw cycles.



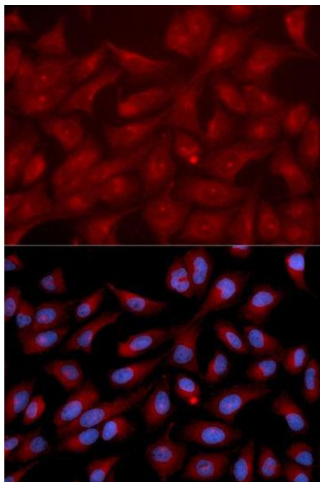
Western Blotting

Image 1. Western blot analysis of extracts of various cell lines, using RAPGEF3 antibody.



Immunofluorescence

Image 2. Immunofluorescence analysis of U2OS cells using RAPGEF3 antibody.



Immunofluorescence

Image 3. Immunofluorescence analysis of U2OS cell using RAPGEF3 antibody. Blue: DAPI for nuclear staining.