



[Go to Product page](#)

Datasheet for ABIN3023307
anti-AP2M1 antibody (AA 134-433)

2 Images

Overview

Quantity:	100 µL
Target:	AP2M1
Binding Specificity:	AA 134-433
Reactivity:	Human
Host:	Rabbit
Clonality:	Polyclonal
Conjugate:	This AP2M1 antibody is un-conjugated
Application:	Western Blotting (WB)

Product Details

Immunogen:	Recombinant fusion protein containing a sequence corresponding to amino acids 134-433 of human AP2M1 (NP_001020376.1).
Sequence:	TQQGIKSQTK EEQSQITSQV TGQIGWRREG IKYRRNELFL DVLESVNLLM SPQGQVLSAH VSGRVVMKSY LSGMPECKFG MNDKIVIEKQ GKGTADETSK SGKQSIADD CTFHQCVRLS KFDSEISIF IPPDGEFELM RYRTTKDIIL PFRVIPLVRE VGRTKLEVKV VIKSNFKPSL LAQKIEVRIP TPLNTSGVQV ICMKGKAKYK ASENIVWKI KRMAGMKESQ ISAEIELLPT NDKKKWARPP ISMNFEVPFA PSGLKVRYLK VFEPKLNYS DHDVIKWVRYI GRSGIYETRC
Isotype:	IgG
Cross-Reactivity:	Human
Characteristics:	Polyclonal Antibodies
Purification:	Affinity purification

Target Details

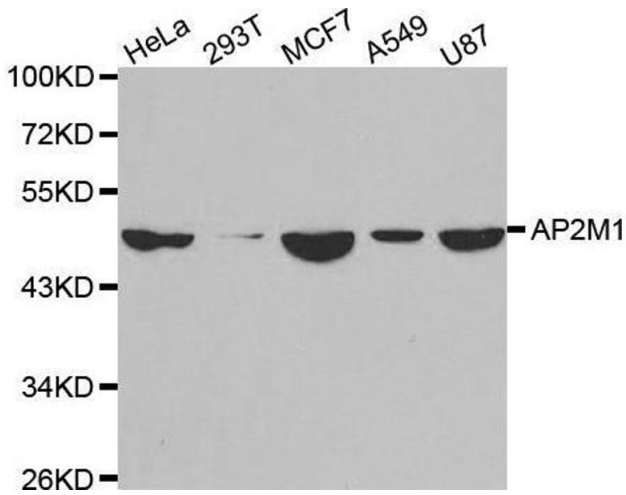
Target:	AP2M1
Alternative Name:	AP2M1 (AP2M1 Products)
Background:	<p>This gene encodes a subunit of the heterotetrameric coat assembly protein complex 2 (AP2), which belongs to the adaptor complexes medium subunits family. The encoded protein is required for the activity of a vacuolar ATPase, which is responsible for proton pumping occurring in the acidification of endosomes and lysosomes. The encoded protein may also play an important role in regulating the intracellular trafficking and function of CTLA-4 protein. Three transcript variants encoding different isoforms have been found for this gene.,AP2M1,AP50,CLAPM1,mu2,Signal Transduction,Neuroscience,Neurodegenerative Diseases,AP2M1</p>
Molecular Weight:	49 kDa
Gene ID:	1173
UniProt:	Q96CW1
Pathways:	EGFR Signaling Pathway , Neurotrophin Signaling Pathway , EGFR Downregulation , SARS-CoV-2 Protein Interactome

Application Details

Application Notes:	WB,1:500 - 1:2000
Restrictions:	For Research Use only

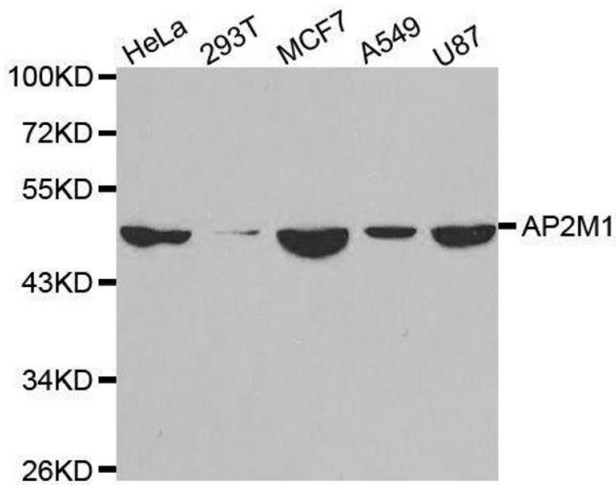
Handling

Format:	Liquid
Buffer:	PBS with 0.02 % sodium azide,50 % glycerol, pH 7.3.
Preservative:	Sodium azide
Precaution of Use:	This product contains Sodium azide: a POISONOUS AND HAZARDOUS SUBSTANCE which should be handled by trained staff only.
Handling Advice:	Avoid freeze / thaw cycles
Storage:	-20 °C
Storage Comment:	Store at -20°C. Avoid freeze / thaw cycles.



Western Blotting

Image 1. Western blot analysis of extracts of various cell lines, using AP2M1 antibody.



Western Blotting

Image 2. Western blot analysis of extracts of various cell lines, using AP2M1 antibody.