

Datasheet for ABIN3023343
anti-RPS3 antibody (AA 1-243)

9 Images

[Go to Product page](#)

Overview

Quantity:	100 µL
Target:	RPS3
Binding Specificity:	AA 1-243
Reactivity:	Human
Host:	Rabbit
Clonality:	Polyclonal
Conjugate:	This RPS3 antibody is un-conjugated
Application:	Western Blotting (WB), Immunohistochemistry (IHC), Immunofluorescence (IF)

Product Details

Immunogen:	Recombinant fusion protein containing a sequence corresponding to amino acids 1-243 of human RPS3 (NP_000996.2).
Sequence:	MAVQISKRRK FVADGIFKAE LNEFLTRELA EDGYSGVEVR VTPTRTEIII LATRTQNVLG EKGRRIRELT AVVQKRFGFP EGSVELYAEK VATRGLCAIA QAESLRYKLL GGLAVRRACY GVLRFIMESG AKGCEVVVSG KLRGQRAKSM KFVDGLMIHS GDPVNYVVDV AVRHVLLRQG VLGIKVKIML PWDPTGKIGP KKPLPDHVS IVEPKDEILPT TPISQKGGK PEPPAMPQPV PTA
Isotype:	IgG
Cross-Reactivity:	Human, Mouse, Rat
Characteristics:	Polyclonal Antibodies

Target Details

Target:	RPS3
Alternative Name:	RPS3 (RPS3 Products)
Background:	<p>Ribosomes, the organelles that catalyze protein synthesis, consist of a small 40S subunit and a large 60S subunit. Together these subunits are composed of 4 RNA species and approximately 80 structurally distinct proteins. This gene encodes a ribosomal protein that is a component of the 40S subunit, where it forms part of the domain where translation is initiated. The protein belongs to the S3P family of ribosomal proteins. Studies of the mouse and rat proteins have demonstrated that the protein has an extraribosomal role as an endonuclease involved in the repair of UV-induced DNA damage. The protein appears to be located in both the cytoplasm and nucleus but not in the nucleolus. Higher levels of expression of this gene in colon adenocarcinomas and adenomatous polyps compared to adjacent normal colonic mucosa have been observed. This gene is co-transcribed with the small nucleolar RNA genes U15A and U15B, which are located in its first and fifth introns, respectively. As is typical for genes encoding ribosomal proteins, there are multiple processed pseudogenes of this gene dispersed through the genome. Multiple alternatively spliced transcript variants encoding different isoforms have been found for this gene.,RPS3,S3,Epigenetics & Nuclear Signaling,DNA Damage & Repair,RNA Binding,Cell Biology & Developmental Biology,Apoptosis,RPS3</p>
Molecular Weight:	26 kDa/28 kDa
Gene ID:	6188
UniProt:	P23396
Pathways:	Positive Regulation of Endopeptidase Activity

Application Details

Application Notes:	WB,1:500 - 1:2000,IHC,1:50 - 1:200,IF,1:50 - 1:200
Restrictions:	For Research Use only

Handling

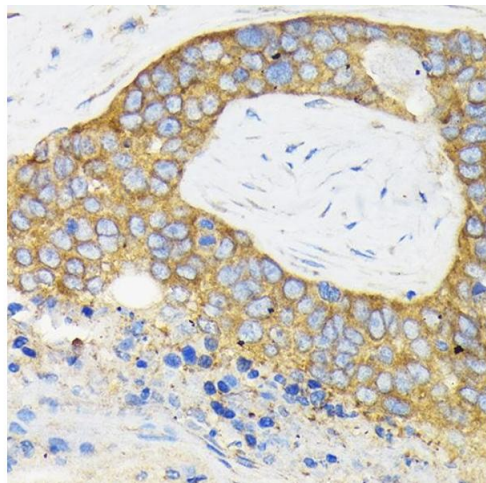
Buffer:	PBS with 0.02 % sodium azide,50 % glycerol, pH 7.3.
Preservative:	Sodium azide
Precaution of Use:	This product contains Sodium azide: a POISONOUS AND HAZARDOUS SUBSTANCE which should be handled by trained staff only.

Handling

Storage: -20 °C

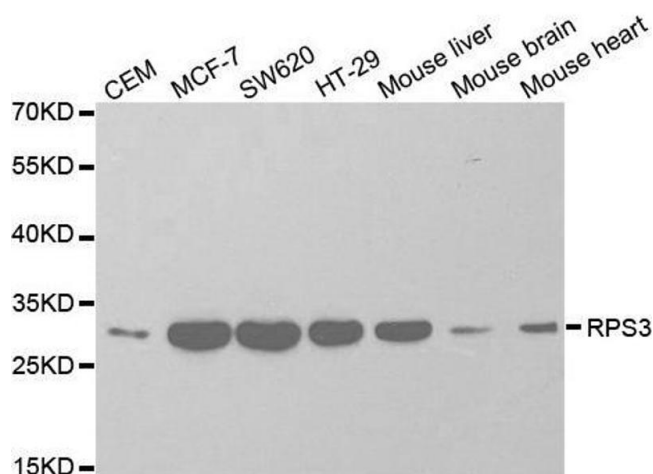
Storage Comment: Store at -20°C. Avoid freeze / thaw cycles.

Images



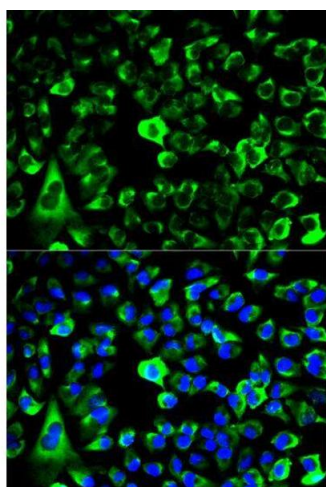
Immunohistochemistry

Image 1. Immunohistochemistry of paraffin-embedded human esophageal cancer using RPS3 Rabbit pAb (ABIN3023342, ABIN3023343, ABIN3023344 and ABIN6219623) at dilution of 1:100 (40x lens). Perform microwave antigen retrieval with 10 mM Tris/EDTA buffer pH 9.0 before commencing with IHC staining protocol.



Western Blotting

Image 2. Western blot analysis of extracts of various cell lines, using RPS3 antibody.



Immunofluorescence

Image 3. Immunofluorescence analysis of HeLa cell using RPS3 antibody. Blue: DAPI for nuclear staining.

Please check the [product details page](#) for more images. Overall 9 images are available for ABIN3023343.