



[Go to Product page](#)

Datasheet for ABIN3023448

anti-KLF5 antibody (AA 1-250)

3 Images

Overview

Quantity:	100 µL
Target:	KLF5
Binding Specificity:	AA 1-250
Reactivity:	Human
Host:	Rabbit
Clonality:	Polyclonal
Conjugate:	This KLF5 antibody is un-conjugated
Application:	Western Blotting (WB), Immunohistochemistry (IHC)

Product Details

Immunogen:	Recombinant fusion protein containing a sequence corresponding to amino acids 1-250 of human KLF5 (NP_001721.2).
Sequence:	MATRVLSMSA RLGPVPQPPA PQDEPVFAQL KPVLGAANPA RDAALFPGEE LKHAHHRPQA QPAPAQAPQP AQPPATGPRL PPEDLVQTRC EMEKYLTPQL PPVPIPEHK KYRRDSASVV DQFFTDTEGL PYSINMNVFL PDITHLRTGL YKSQRPCVTH IKTEPVVAIFS HQSETTAPPP APTQALPEFT SIFSSHQTAA PEVNNIFIKQ ELPTPDLHLS VPTQQGHLYQ LLNTPDLDMP SSTNQTAAMD
Isotype:	IgG
Cross-Reactivity:	Human, Mouse
Characteristics:	Polyclonal Antibodies

Target Details

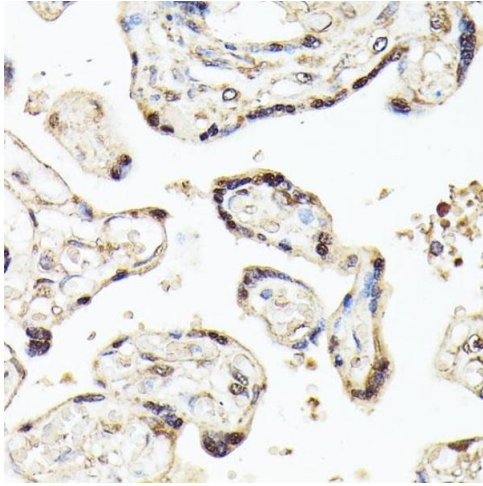
Target:	KLF5
Alternative Name:	KLF5 (KLF5 Products)
Background:	<p>This gene encodes a member of the Kruppel-like factor subfamily of zinc finger proteins. The encoded protein is a transcriptional activator that binds directly to a specific recognition motif in the promoters of target genes. This protein acts downstream of multiple different signaling pathways and is regulated by post-translational modification. It may participate in both promoting and suppressing cell proliferation. Expression of this gene may be changed in a variety of different cancers and in cardiovascular disease. Alternative splicing results in multiple transcript variants.,KLF5,BTEB2,CKLF,IKLF,Epigenetics & Nuclear Signaling,Transcription Factors,Cancer,Tumor suppressors,p53 pathway,Cell Biology & Developmental Biology,Apoptosis,Stem Cells,Mesenchymal Stem Cells,Cardiovascular,Angiogenesis,Heart,Hypertrophy,KLF5</p>
Molecular Weight:	18 kDa/33 kDa/41 kDa/50 kDa
Gene ID:	688
UniProt:	Q13887

Application Details

Application Notes:	WB,1:200 - 1:1000,IHC,1:50 - 1:200
Restrictions:	For Research Use only

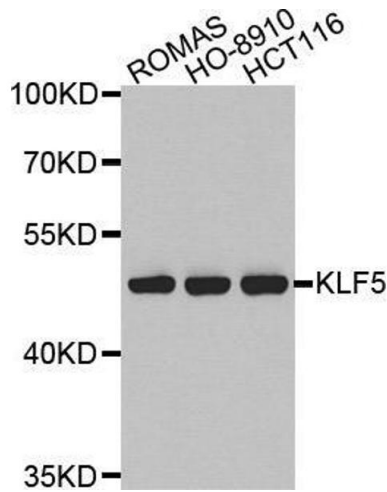
Handling

Buffer:	PBS with 0.02 % sodium azide,50 % glycerol, pH 7.3.
Preservative:	Sodium azide
Precaution of Use:	This product contains Sodium azide: a POISONOUS AND HAZARDOUS SUBSTANCE which should be handled by trained staff only.
Storage:	-20 °C
Storage Comment:	Store at -20°C. Avoid freeze / thaw cycles.



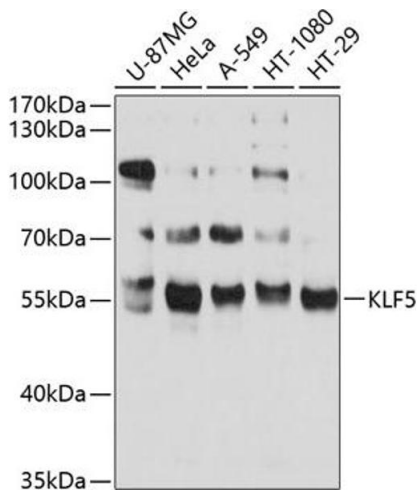
Immunohistochemistry

Image 1. Immunohistochemistry of paraffin-embedded human placenta using KLF5 antibody (ABIN3023447, ABIN3023448, ABIN3023449 and ABIN6219969) at dilution of 1:100 (40x lens). Perform microwave antigen retrieval with 10 mM PBS buffer pH 7.2 before commencing with IHC staining protocol.



Western Blotting

Image 2. Western blot analysis of extracts of various cell lines, using KLF5 antibody. (1: ROMAS cell lysate 2: HO-8910 cell lysate 3: HCT116 cell lysate)



Western Blotting

Image 3. Western blot analysis of extracts of various cell lines, using KLF5 antibody (ABIN3023447, ABIN3023448, ABIN3023449 and ABIN6219969) at 1:1000 dilution. Secondary antibody: HRP Goat Anti-Rabbit IgG (H+L) (ABIN1684268 and ABIN3020597) at 1:10000 dilution. Lysates/proteins: 25 µg per lane. Blocking buffer: 3 % nonfat dry milk in TBST. Detection: ECL Basic Kit (RM00020). Exposure time: 15s.