

Datasheet for ABIN3023673
anti-RCAS1 antibody (AA 28-213)



[Go to Product page](#)

2 Images

Overview

Quantity:	100 µL
Target:	RCAS1 (EBAG9)
Binding Specificity:	AA 28-213
Reactivity:	Human
Host:	Rabbit
Clonality:	Polyclonal
Conjugate:	This RCAS1 antibody is un-conjugated
Application:	Western Blotting (WB)

Product Details

Immunogen:	Recombinant fusion protein containing a sequence corresponding to amino acids 28-213 of human EBAG9 (NP_004206.1).
Sequence:	RSGRGRKLSG DQITLPTTVD YSSVPKQTDV EEWTSWDEDA PTSVKIEGGN GNVATQQNSL EQLEPDYFKD MTP TIRKTQK IVIKKREPLN FGIPDGSTGF SSRLAATQDL PFIHQSSSELG DLDTWQENTN AWEEEEEDAAW QAEEVLRQQK LADREKRAAE QQRKKMEKEA QRLMKKEQNK IGVKLS
Isotype:	IgG
Cross-Reactivity:	Human, Mouse
Characteristics:	Polyclonal Antibodies
Purification:	Affinity purification

Target Details

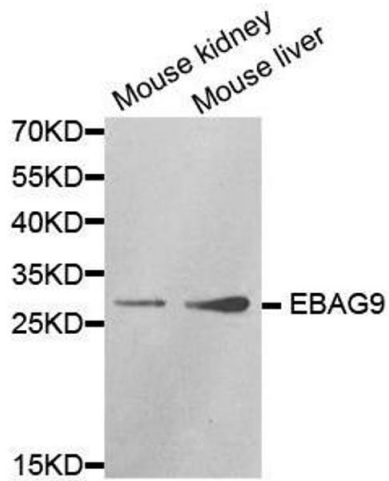
Target:	RCAS1 (EBAG9)
Alternative Name:	EBAG9 (EBAG9 Products)
Background:	<p>This gene was identified as an estrogen-responsive gene. Regulation of transcription by estrogen is mediated by estrogen receptor, which binds to the estrogen-responsive element found in the 5'-flanking region of this gene. The encoded protein is a tumor-associated antigen that is expressed at high frequency in a variety of cancers. Alternate splicing results in multiple transcript variants. A pseudogene of this gene has been defined on chromosome 10.,EBAG9,EB9,PDAF,Cancer,Tumor immunology,Tumor-associated antigens,Tumor biomarkers,Signal Transduction,Cell Biology & Developmental Biology,Apoptosis,Growth factor,Immunology & Inflammation,EBAG9</p>
Molecular Weight:	24 kDa/29 kDa
Gene ID:	9166
UniProt:	O00559

Application Details

Application Notes:	WB,1:500 - 1:2000
Restrictions:	For Research Use only

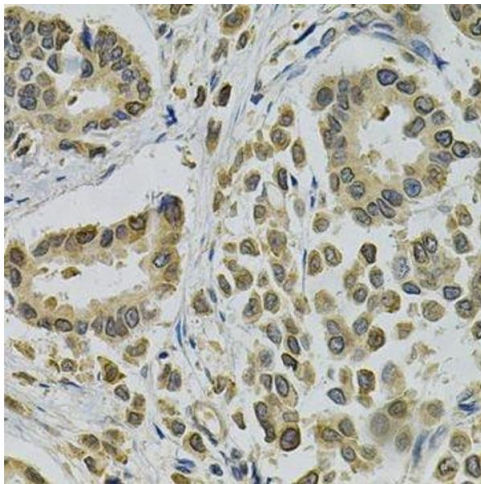
Handling

Buffer:	PBS with 0.02 % sodium azide,50 % glycerol, pH 7.3.
Preservative:	Sodium azide
Precaution of Use:	This product contains Sodium azide: a POISONOUS AND HAZARDOUS SUBSTANCE which should be handled by trained staff only.
Storage:	-20 °C
Storage Comment:	Store at -20°C. Avoid freeze / thaw cycles.



Western Blotting

Image 1. Western blot analysis of extracts of various cell lines, using EBAG9 antibody.



Immunohistochemistry (Paraffin-embedded Sections)

Image 2. Immunohistochemistry of paraffin-embedded human breast cancer using EBAG9 Antibody.