



[Go to Product page](#)

Datasheet for ABIN3023679

## anti-FOXM1 antibody (AA 1-350)

3 Images

2 Publications

### Overview

|                      |   |
|----------------------|---|
| Quantity:            | 100 µL  |
| Target:              | FOXM1   |
| Binding Specificity: | AA 1-350  |
| Reactivity:          | Human   |
| Host:                | Rabbit  |
| Clonality:           | Polyclonal  |
| Conjugate:           | This FOXM1 antibody is un-conjugated                        |
| Application:         | Western Blotting (WB), Chromatin Immunoprecipitation (ChIP) |

### Product Details

|                   |   |
|-------------------|---|
| Immunogen:        | Recombinant fusion protein containing a sequence corresponding to amino acids 1-350 of human FOXM1 (NP_973732.1).   |
| Sequence:         | MKTSPRRPLI LKRRRLPLPV QNAPSETSEE EPKRSPAQQE SNQAEASKEV AESNSCKFPA<br>GIKIINHPTM PNTQVVAIPN NANIHSIITA LTAKGKESGS SGPKNFILIS CGGAPTQPPG<br>LRPQTQTSYD AKRTEVTLET LGPKPAARDV NLPRPPGALC EQKRETCADG EAAGCTINNS<br>LSNIQWLRKM SSDGLGSRSI KQEMEEKENC HLEQRQVKVE EPSRPSASWQ NSVSERPPYS<br>YMAMIQFAIN STERKRMTLK DIYTWIEDHF PYFKHIAKPG WKNSIRHNLS LHDMFVRETS<br>ANGKVSFWTI HPSANRYLTL DQVFKQQKRP NPELRRNMTI KTELPLGARR |
| Isotype:          | IgG   |
| Cross-Reactivity: | Human, Mouse, Rat   |
| Characteristics:  | Polyclonal Antibodies   |

## Product Details

---

Purification: Affinity purification

## Target Details

---

Target: FOXM1

Alternative Name: FOXM1 ([FOXM1 Products](#))

Background: The protein encoded by this gene is a transcriptional activator involved in cell proliferation. The encoded protein is phosphorylated in M phase and regulates the expression of several cell cycle genes, such as cyclin B1 and cyclin D1. Several transcript variants encoding different isoforms have been found for this gene.,FKHL16,FOXM1B,HFH-11,HFH11,HNF-3,INS-1,MPHOSPH2,MPP-2,MPP2,PIG29,TRIDENT,FOXM1,Epigenetics & Nuclear Signaling,Transcription Factors,Cancer,FOXM1

Molecular Weight: 82 kDa/84 kDa/88 kDa

Gene ID: 2305

UniProt: [Q08050](#)

Pathways: [Positive Regulation of Response to DNA Damage Stimulus](#)

## Application Details

---

Application Notes: WB,1:500 - 1:2000,ChIP,1:20 - 1:200

Restrictions: For Research Use only

## Handling

---

Buffer: PBS with 0.02 % sodium azide,50 % glycerol, pH 7.3.

Preservative: Sodium azide

Precaution of Use: This product contains Sodium azide: a POISONOUS AND HAZARDOUS SUBSTANCE which should be handled by trained staff only.

Storage: -20 °C

Storage Comment: Store at -20°C. Avoid freeze / thaw cycles.

## Publications

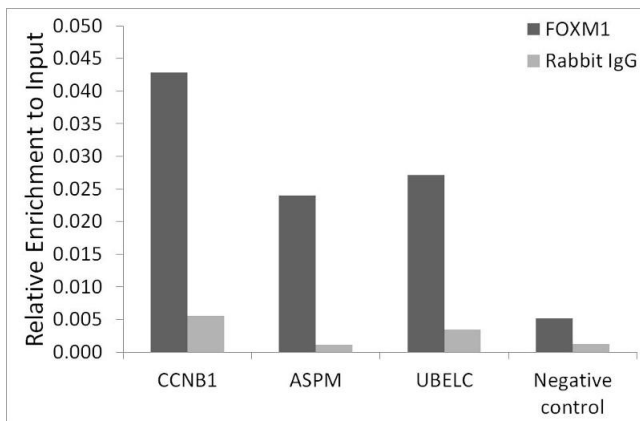
---

Product cited in: Li, Sun, Li, Lv, Semukunzi, Li, Yu, Yuan, Lin: "DT-13 synergistically enhanced vinorelbine-

mediated mitotic arrest through inhibition of FOXM1-BICD2 axis in non-small-cell lung cancer cells." in: **Cell death & disease**, Vol. 8, Issue 5, pp. e2810, (2018) ([PubMed](#)).

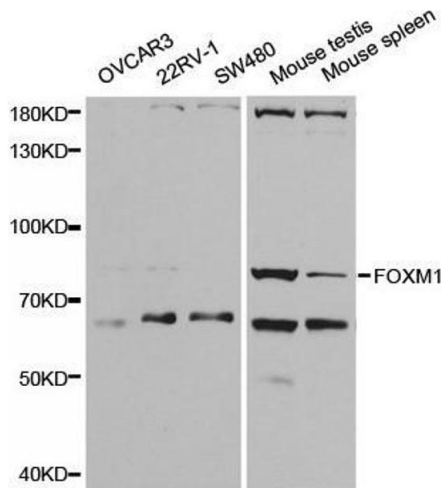
Jiang, Liao, He, Xin, Tu, Kong, Cui, Wang, Quan, Li, Zhang, Wang: "FoxM1 Directs STAT3 Expression Essential for Human Endometrial Stromal Decidualization." in: **Scientific reports**, Vol. 5, pp. 13735, (2016) ([PubMed](#)).

Images



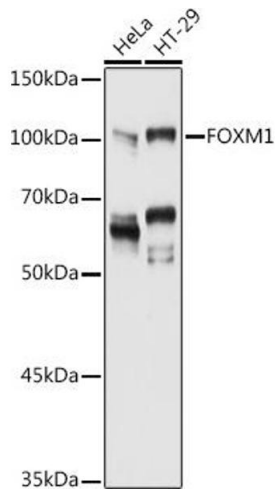
Chromatin Immunoprecipitation

**Image 1.** Chromatin immunoprecipitation analysis of extracts of 293T cells, using FOXM1 antibody (ABIN3023678, ABIN3023679, ABIN3023680, ABIN1679892 and ABIN6219567) and rabbit IgG. The amount of immunoprecipitated DNA was checked by quantitative PCR. Histogram was constructed by the ratios of the immunoprecipitated DNA to the input.



Western Blotting

**Image 2.** Western blot analysis of extracts of various cell lines, using FOXM1 antibody.



### Western Blotting

**Image 3.** Western blot analysis of extracts of various cell lines, using FOXM1 antibody (ABIN3023678, ABIN3023679, ABIN3023680, ABIN1679892 and ABIN6219567) at 1:1000 dilution. Secondary antibody: HRP Goat Anti-Rabbit IgG (H+L) (ABIN1684268 and ABIN3020597) at 1:10000 dilution. Lysates/proteins: 25 µg per lane. Blocking buffer: 3 % nonfat dry milk in TBST. Detection: ECL Basic Kit (RM00020). Exposure time: 90s.