



[Go to Product page](#)

Datasheet for ABIN3023703
anti-SIN3A antibody (AA 1-120)

5 Images

Overview

Quantity:	100 µL
Target:	SIN3A
Binding Specificity:	AA 1-120
Reactivity:	Human
Host:	Rabbit
Clonality:	Polyclonal
Conjugate:	This SIN3A antibody is un-conjugated
Application:	Western Blotting (WB), Immunofluorescence (IF), Immunoprecipitation (IP), Chromatin Immunoprecipitation (ChIP)

Product Details

Immunogen:	Recombinant fusion protein containing a sequence corresponding to amino acids 1-120 of human Sin3A (NP_056292.1).
Sequence:	MKRRLLDDQES PVYAAQRRRI PGSTEAFFPHQ HRVLAPAPPV YEAVSETMQS ATGIQYSVTP SYQVSAMPQS SGSHGPAIAA VHSSHHHPTA VQPHGGQVVQ SHAHPAPPVA PVQGQQQFQR
Isotype:	IgG
Cross-Reactivity:	Human, Mouse, Rat
Characteristics:	Polyclonal Antibodies

Target Details

Target:	SIN3A
---------	-------

Target Details

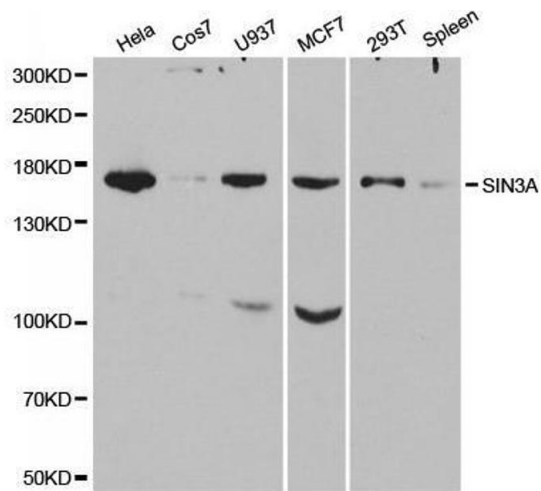
Alternative Name:	SIN3A (SIN3A Products)
Background:	The protein encoded by this gene is a transcriptional regulatory protein. It contains paired amphipathic helix (PAH) domains, which are important for protein-protein interactions and may mediate repression by the Mad-Max complex.,SIN3A,WITKOS,Epigenetics & Nuclear Signaling,Cancer,Endocrine & Metabolism,Lipid Metabolism,Neuroscience,Neurodegenerative Diseases,SIN3A
Molecular Weight:	145 kDa
Gene ID:	25942
UniProt:	Q96ST3
Pathways:	Activation of Innate immune Response , Carbohydrate Homeostasis , Chromatin Binding , Regulation of Lipid Metabolism by PPARAlpha

Application Details

Application Notes:	WB,1:500 - 1:2000,IF,1:50 - 1:200,IP,1:50 - 1:100,ChIP,1:20 - 1:100
Restrictions:	For Research Use only

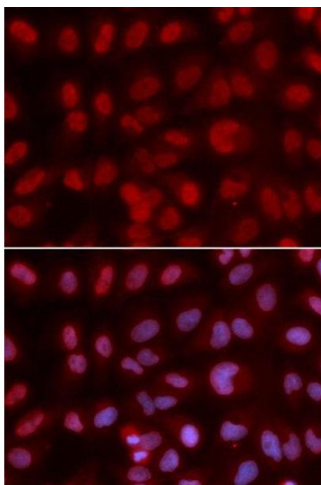
Handling

Buffer:	PBS with 0.02 % sodium azide,50 % glycerol, pH 7.3.
Preservative:	Sodium azide
Precaution of Use:	This product contains Sodium azide: a POISONOUS AND HAZARDOUS SUBSTANCE which should be handled by trained staff only.
Storage:	-20 °C
Storage Comment:	Store at -20°C. Avoid freeze / thaw cycles.



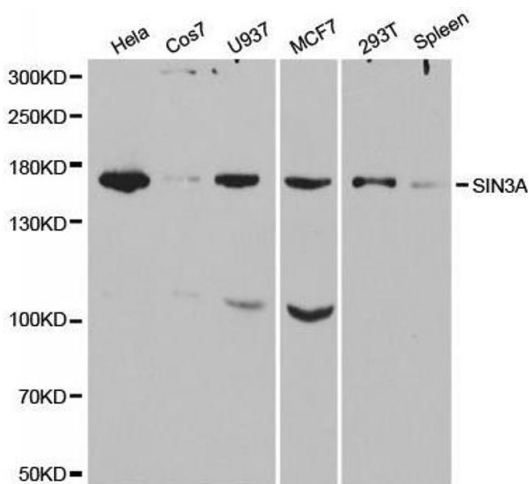
Western Blotting

Image 1. Western blot analysis of extracts of various cell lines, using SIN3A antibody.



Immunofluorescence

Image 2. Immunofluorescence analysis of U2OS cell using SIN3A antibody. Blue: DAPI for nuclear staining.



Western Blotting

Image 3. Western blot analysis of extracts of various cell lines, using SIN3A antibody.

Please check the [product details page](#) for more images. Overall 5 images are available for ABIN3023703.