

Datasheet for ABIN3023746  
**Rabbit IgG Isotype Control**



[Go to Product page](#)

2 Images

1 Publication

### Overview

Quantity:	100 µg
Target:	IgG
Host:	Rabbit
Clonality:	Polyclonal
Application:	Flow Cytometry (FACS), Immunohistochemistry (IHC), Immunofluorescence (IF)

### Product Details

Immunogen:	This is purified naive rabbit sera and as such there was no immunogen.
Isotype:	IgG
Purification:	Protein A purified IgG fraction

### Target Details

Target:	IgG
Abstract:	<a href="#">IgG Products</a>
Target Type:	Antibody
Background:	Isotype control antibodies are negative controls used to measure non-specific binding or background levels of a primary antibody in different cell types. They are not specific to any target in a cell, yet retain all non-specific characteristics of the antibodies they control.

### Application Details

Application Notes:	Generally to be used at the same concentration as the sample being controlled for.\. FACS:
--------------------	--

## Application Details

assay dependent,IHC: assay dependent,IF: assay dependent

Restrictions: For Research Use only

## Handling

Concentration: 0.5 mg/mL

Buffer: 0.5 mg/mL in 1X PBS with 0.05 % sodium azide

Preservative: Sodium azide

Precaution of Use: This product contains Sodium azide: a POISONOUS AND HAZARDOUS SUBSTANCE which should be handled by trained staff only.

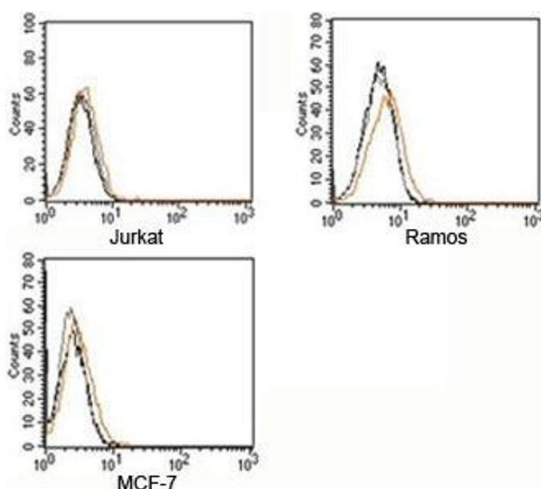
Storage: -20 °C

Storage Comment: Aliquot the rabbit antibody and store frozen at -20°C or colder to avoid repeated freeze-thaw cycles.

## Publications

Product cited in: Shan, Xu, Bleyer, Becker, Melbaum, Wemheuer, Hirschfeld, Wacker, Zhao, Schütz, Brenig: "Association of  $\alpha/\beta$ -Hydrolase D16B with Bovine Conception Rate and Sperm Plasma Membrane Lipid Composition." in: **International journal of molecular sciences**, Vol. 21, Issue 2, (2020) ([PubMed](#)).

## Validation report #104459 for Immunohistochemistry (IHC)



### Flow Cytometry

**Image 1.** FACS testing of Rabbit IgG isotype control antibody on human samples. Black=cells alone, gray=cells + secondary, orange=cells + isotype control antibody + secondary

## Flow Cytometry

**Image 2.** FACS testing of Rabbit IgG isotype control antibody on mouse samples. Black=cells alone, gray=cells + secondary, orange=cells + isotype control antibody + secondary

