



[Go to Product page](#)

Datasheet for ABIN3023747

Rabbit IgG isotype control (APC)

2 Images

Overview

Quantity:	100 µg
Target:	IgG
Host:	Rabbit
Clonality:	Polyclonal
Conjugate:	APC
Application:	Flow Cytometry (FACS), Immunohistochemistry (IHC), Immunofluorescence (IF)

Product Details

Immunogen:	This is purified naive rabbit sera and as such there was no immunogen.
Isotype:	IgG
Purification:	Protein A Affinity Chromatography

Target Details

Target:	IgG
Abstract:	IgG Products
Target Type:	Antibody
Background:	Isotype control antibodies are negative controls used to measure non-specific binding or background levels of a primary antibody in different cell types. They are not specific to any target in a cell, yet retain all non-specific characteristics of the antibodies they control.

Application Details

Application Notes: Generally to be used at the same concentration as the sample being controlled for.\. FACS: assay dependent,IHC: assay dependent,IF: assay dependent

Restrictions: For Research Use only

Handling

Concentration: 0.5 mg/mL

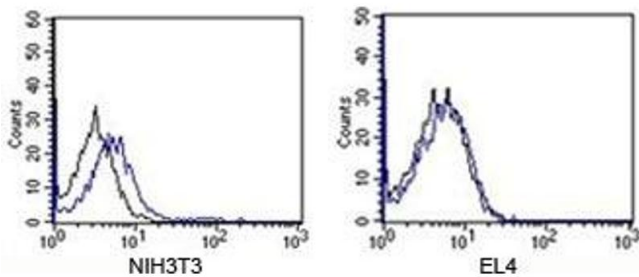
Buffer: 0.5 mg/mL in 1X PBS with 0.05 % sodium azide

Preservative: Sodium azide

Precaution of Use: This product contains Sodium azide: a POISONOUS AND HAZARDOUS SUBSTANCE which should be handled by trained staff only.

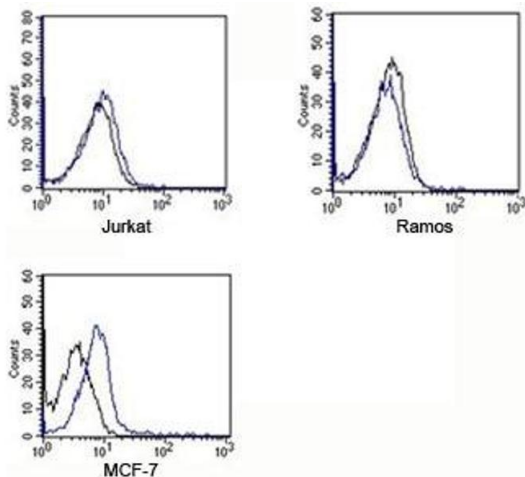
Storage Comment: Store the Rabbit IgG isotype control antibody at 4oC. Do not freeze, protect from light.

Images



Flow Cytometry

Image 1. FACS testing of Rabbit IgG isotype control antibody on mouse samples. Black=cells alone, blue=isotype control antibody



Flow Cytometry

Image 2. FACS testing of Rabbit IgG isotype control antibody on human samples. Black=cells alone, blue=isotype control antibody