



[Go to Product page](#)

Datasheet for ABIN3023748

Rabbit IgG isotype control (FITC)

2 Images

Overview

Quantity:	100 µg
Target:	IgG
Host:	Rabbit
Clonality:	Polyclonal
Conjugate:	FITC
Application:	Flow Cytometry (FACS), Immunohistochemistry (IHC), Immunofluorescence (IF)

Product Details

Immunogen:	This is purified naive rabbit sera and as such there was no immunogen.
Isotype:	IgG
Purification:	Protein A Affinity Chromatography

Target Details

Target:	IgG
Abstract:	IgG Products
Target Type:	Antibody
Background:	Isotype control antibodies are negative controls used to measure non-specific binding or background levels of a primary antibody in different cell types. They are not specific to any target in a cell, yet retain all non-specific characteristics of the antibodies they control.

Application Details

Application Notes: Generally to be used at the same concentration as the sample being controlled for. FACS: assay dependent, IHC: assay dependent, IF: assay dependent

Restrictions: For Research Use only

Handling

Concentration: 0.5 mg/mL

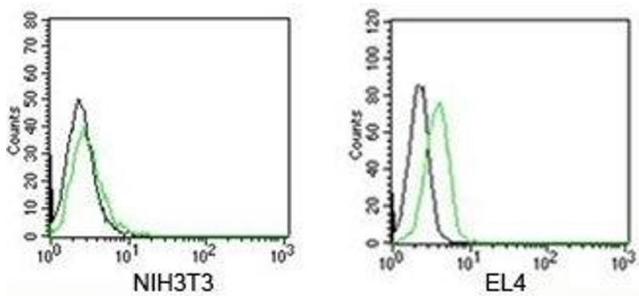
Buffer: 0.5 mg/mL in 1X PBS with 0.05 % sodium azide

Preservative: Sodium azide

Precaution of Use: This product contains Sodium azide: a POISONOUS AND HAZARDOUS SUBSTANCE which should be handled by trained staff only.

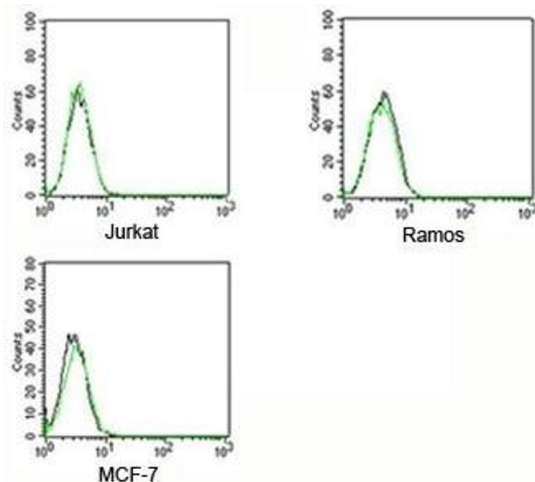
Storage Comment: Store the Rabbit IgG isotype control antibody at 4°C. Do not freeze, protect from light.

Images



Flow Cytometry

Image 1. FACS testing of Rabbit IgG isotype control antibody FITC conjugate on mouse samples. Black=cells alone, green= isotype control antibody



Flow Cytometry

Image 2. FACS testing of Rabbit IgG isotype control antibody FITC conjugate on human samples. Black=cells alone, green= isotype control antibody