

Datasheet for ABIN3023870

anti-LAMP3 antibody

3 Images

[Go to Product page](#)

Overview

Quantity:	100 µg
Target:	LAMP3
Reactivity:	Human
Host:	Mouse
Clonality:	Monoclonal
Conjugate:	This LAMP3 antibody is un-conjugated
Application:	Immunofluorescence (IF), Immunohistochemistry (Paraffin-embedded Sections) (IHC (p)), Flow Cytometry (FACS)

Product Details

Immunogen:	Recombinant human full-length protein was used as the immunogen for the LAMP3 antibody.
Clone:	LAMP3-968
Isotype:	IgG2a kappa
Characteristics:	<p>This mAb recognizes protein of 26 kDa-60 kDa, which is identified as CD63/LAMP3. Its epitope is different from that of mAb LAMP3/529. The tetraspanins are integral membrane proteins expressed on cell surface and granular membranes of hematopoietic cells and are components of multi-molecular complexes with specific integrins. The tetraspanin CD63/LAMP3 is a lysosomal membrane glycoprotein that translocates to the plasma membrane after platelet activation. It is expressed on activated platelets, monocytes and macrophages, and is weakly expressed on granulocytes, T cell and B cells. It is located on the basophilic granule membranes and on the plasma membranes of lymphocytes and granulocytes. CD63 is a member of the TM4 superfamily of leukocyte glycoproteins that includes CD9, CD37 and CD53,</p>

Product Details

which contain four transmembrane regions. CD63/LAMP3 may play a role in phagocytic and intracellular lysosome-phagosome fusion events. Deficiency is associated with Hermansky-Pudlak syndrome and is strongly expressed during the early stages of melanoma progression.

Purification: Protein G affinity chromatography

Target Details

Target: LAMP3

Alternative Name: LAMP3 ([LAMP3 Products](#))

Background: This mAb recognizes protein of 26 kDa-60 kDa, which is identified as CD63/LAMP3. Its epitope is different from that of mAb LAMP3/529. The tetraspanins are integral membrane proteins expressed on cell surface and granular membranes of hematopoietic cells and are components of multi-molecular complexes with specific integrins. The tetraspanin CD63/LAMP3 is a lysosomal membrane glycoprotein that translocates to the plasma membrane after platelet activation. It is expressed on activated platelets, monocytes and macrophages, and is weakly expressed on granulocytes, T cell and B cells. It is located on the basophilic granule membranes and on the plasma membranes of lymphocytes and granulocytes. CD63 is a member of the TM4 superfamily of leukocyte glycoproteins that includes CD9, CD37 and CD53, which contain four transmembrane regions. CD63/LAMP3 may play a role in phagocytic and intracellular lysosome-phagosome fusion events. Deficiency is associated with Hermansky-Pudlak syndrome and is strongly expressed during the early stages of melanoma progression.

Application Details

Application Notes: Optimal dilution of the LAMP3 antibody should be determined by the researcher.

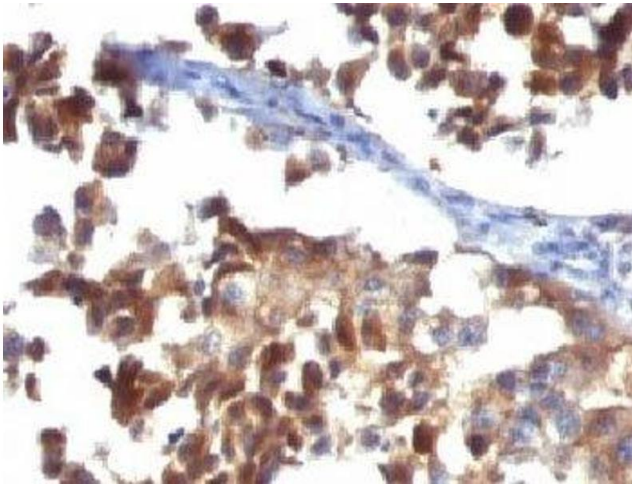
1. Staining of formalin-fixed tissues requires boiling tissue sections in 10 mM Citrate buffer, pH 6.0, for 10-20 min followed by cooling at RT for 20 min.
2. The prediluted format is supplied in a dropper bottle and is optimized for use in IHC. After epitope retrieval step (if required), drip mAb solution onto the tissue section and incubate at RT for 30 min. \. Flow Cytometry: 0.5-1 µg/million cells in 0.1ml, Immunofluorescence: 0.5-1 µg/mL, Immunohistochemistry (FFPE): 1-2 µg/mL for 30 min at RT (1), Prediluted format: incubate for 30 min at RT (2)

Restrictions: For Research Use only

Handling

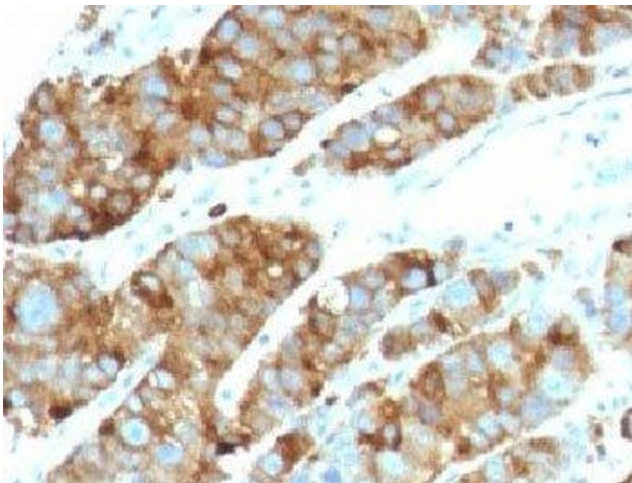
Concentration:	0.2 mg/mL
Buffer:	0.2 mg/mL in 1X PBS with 0.1 mg/mL BSA (US sourced) and 0.05 % sodium azide
Preservative:	Sodium azide
Precaution of Use:	This product contains Sodium azide: a POISONOUS AND HAZARDOUS SUBSTANCE which should be handled by trained staff only.
Storage:	4 °C,-20 °C
Storage Comment:	Store the LAMP3 antibody at 2-8°C (with azide) or aliquot and store at -20°C or colder (without azide).

Images



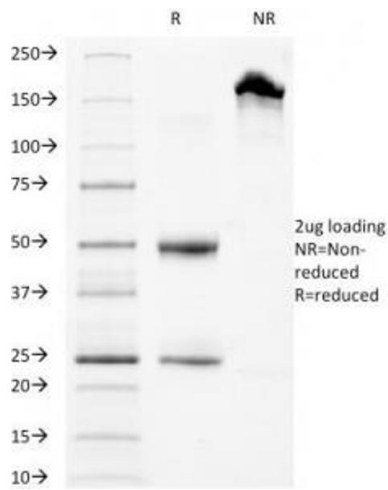
Immunohistochemistry

Image 1. Formalin-fixed, paraffin-embedded human melanoma stained with LAMP3 antibody (LAMP3/968)



Immunohistochemistry

Image 2. Formalin-fixed, paraffin-embedded human prostate carcinoma stained with LAMP3 antibody (LAMP3/968)



SDS-PAGE

Image 3. SDS-PAGE Analysis of Purified, BSA-Free LAMP3 Antibody (clone LAMP3/968). Confirmation of Integrity and Purity of the Antibody.