



[Go to Product page](#)

Datasheet for ABIN3023920

anti-Nuclear Marker antibody (PE)

2 Images

Overview

Quantity:	100 tests
Target:	Nuclear Marker
Reactivity:	Human, Primate
Host:	Mouse
Clonality:	Monoclonal
Conjugate:	This Nuclear Marker antibody is conjugated to PE
Application:	Flow Cytometry (FACS), Immunofluorescence (IF)

Product Details

Immunogen:	Nuclei of human myeloid leukemia biopsy cells were used as the immunogen for this Nuclear marker antibody.
Clone:	235-1
Isotype:	IgG1 kappa
No Cross-Reactivity:	Mouse (Murine), Rat (Rattus), Chicken
Characteristics:	This Nuclear marker antibody is part of a panel of reagents which recognizes subcellular organelles or compartments of human cells. These markers may be useful in identification of these organelles in cells, tissues, and biochemical preparations. Clone 235-1 antibody specifically detects an antigen associated with the nuclei in human cells. It can be used to stain the nuclei in cell or tissue preparations and can be used as a nuclear marker in subcellular fractions. It produces a speckled pattern in normal and malignant cells and may be used to stain the nuclei of cells in fixed or frozen tissue sections. The human nuclear antigen antibody

Product Details

can also be used with paraformaldehyde fixed frozen tissue or cell preparations.

Purity: Protein G affinity chromatography

Target Details

Target: Nuclear Marker

Abstract: [Nuclear Marker Products](#)

Application Details

Application Notes: The concentration stated for each application is a general starting point. Variations in protocols, secondaries and substrates may require the Nuclear marker antibody to be titrated up or down for optimal performance. \. Flow Cytometry : 5 µL/test/million cells or 5 µL/test/100 µL of whole blood, Immunofluorescence : 1:50-1:100 for 30 minutes at RT

Restrictions: For Research Use only

Handling

Concentration: 0.1 mg/mL

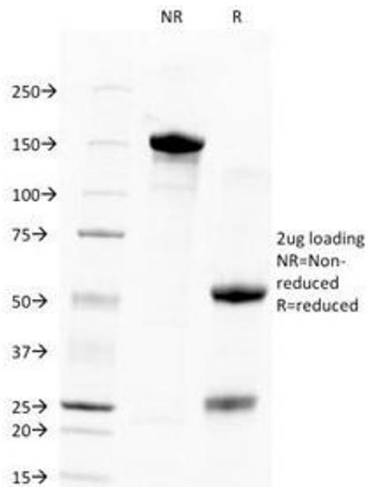
Buffer: 500 µL at 0.1 mg/mL with 0.1 mg/mL BSA (US sourced), 0.05 % sodium azide

Preservative: Sodium azide

Precaution of Use: This product contains Sodium azide: a POISONOUS AND HAZARDOUS SUBSTANCE which should be handled by trained staff only.

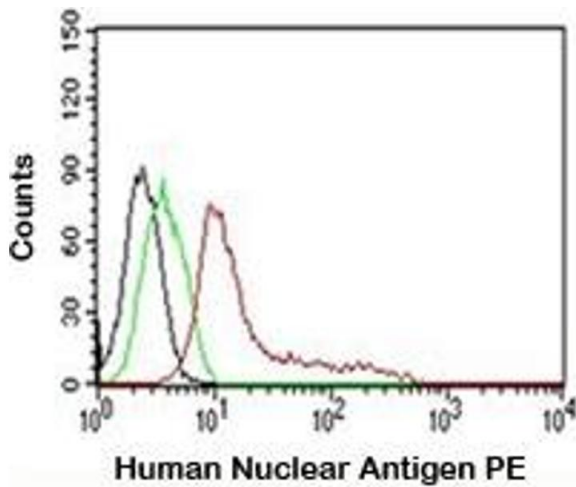
Storage: 4 °C

Storage Comment: Store the human Nuclear antigen antibody at 2-8°C. Conjugate is light sensitive, store in the dark.



SDS-PAGE

Image 1. SDS-PAGE Analysis of Purified, BSA-Free, Unlabeled Human Nuclear Antigen Antibody (clone 235-1). Confirmation of Integrity and Purity of the Antibody.



Flow Cytometry

Image 2. FACS testing of MCF-7 cells: Black=cells alone