



[Go to Product page](#)

Datasheet for ABIN3023995  
**anti-Keratin Basic antibody**

1 Image

Overview

Quantity:	100 µg
Target:	Keratin Basic
Reactivity:	Human, Rat, Mouse, Rabbit, Cow, Chicken, Monkey, Dog
Host:	Mouse
Clonality:	Monoclonal
Conjugate:	Un-conjugated
Application:	Western Blotting (WB), Immunofluorescence (IF), Flow Cytometry (FACS), Immunohistochemistry (Paraffin-embedded Sections) (IHC (p))

Product Details

Immunogen:	Solubilized cytokeratin extract from human stratum corneum was used as the immunogen.
Clone:	AE3
Isotype:	IgG1
Purification:	Protein G purified

Target Details

Target:	Keratin Basic
Alternative Name:	Basic Cytokeratin ( <a href="#">Keratin Basic Products</a> )
Background:	Twenty human keratins are resolved with two-dimensional gel electrophoresis into acidic (pI <5.7) and basic (pI >6.0) subfamilies. This antibody recognizes basic (Type II or HMW) cytokeratins, which include 67 kDa (CK1), 64 kDa (CK3), 59 kDa (CK4), 58 kDa (CK5), 56 kDa

## Target Details

---

(CK6), 52 kDa (CK8). Many studies have shown the usefulness of keratin markers in cancer research and tumor diagnosis. The basic family clone AE3 is commonly used in combination with clone AE1 as a pan cytokeratin antibody acidic + basic cocktail (< a href=../pan-cytokeratin-antibody-cocktail-ae1-ae3-v2330>Cat No V2330).

Gene ID: 3848

## Application Details

---

Application Notes: Differences in protocols and secondaries may cause the Basic Cytokeratin antibody to need titering for optimal performance.

1. FFPE staining requires boiling tissue sections in 10 mM citrate buffer, pH 6.0, for 10-20 min followed by cooling at RT for 20 minutes.
2. The prediluted format is supplied in a dropper bottle and is optimized for use in IHC. After epitope retrieval step (if required), drip mAb solution onto the tissue section and incubate at RT for 30 min.\. FACS: 0.5-1 µg/million cells,IF: 1-2 µg/mL,WB: 0.5-1 µg/mL,IHC (FFPE): 0.5-1 µg/mL for 30 min at RT (1),Prediluted format : incubate for 30 min at RT (2)

Restrictions: For Research Use only

## Handling

---

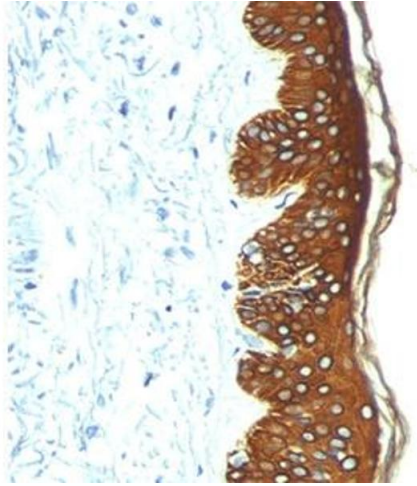
Concentration: 1 mg/mL

Buffer: 1 mg/mL in 1X PBS, BSA free, sodium azide free

Preservative: Azide free

Storage: 4 °C,-20 °C

Storage Comment: Store the Basic Cytokeratin antibody at 2-8°C (with azide) or aliquot and store at -20°C or colder (without azide).



### Immunohistochemistry

**Image 1.** IHC: FFPE skin stained with Basic Cytokeratin antibody AE3.