



[Go to Product page](#)

Datasheet for ABIN3024167 anti-Melanoma antibody

1 Image

Overview

Quantity:	100 µg
Target:	Melanoma
Reactivity:	Human, Dog, Mouse
Host:	Mouse
Clonality:	Monoclonal
Conjugate:	This Melanoma antibody is un-conjugated
Application:	Immunohistochemistry (Paraffin-embedded Sections) (IHC (p)), Immunofluorescence (IF)

Product Details

Immunogen:	Melanocyte antigen was used as the immunogen for the Melanoma antibody PNL2.
Clone:	PNL2
Isotype:	IgG1
Characteristics:	Anti-PNL2 is a novel monoclonal antibody, which has recently been introduced as an immunohistochemical reagent to stain melanocytes and tumors derived therefrom. The antigen recognized by PNL2 is different from Melan A and gp100. Its epitope is not destroyed by digestion with neuraminidase i.e. its epitope is not glycosylated. Anti-PNL2 may be most useful because of its high sensitivity for metastatic melanoma (87 %), as opposed to 76 % for anti-HMB45 and 82 % for anti-MART-1. Anti-PNL2 labels intra-epidermal nevi while the dermal component of compound nevi are largely non-reactive with anti-PNL2. Antibodies against PNL2, MART-1 (Melan A) and HMB45 stain most clear cell sarcoma cells and a few cells in angio-myolipomas and lymphangiomyomatosis. Anti-PNL2 is a useful antibody for the identification of melanomas and clear cell sarcomas. Differential diagnosis is aided by the

Product Details

results from a panel of antibodies, including antibodies against HMB45, MART-1, tyrosinase, and MiTF.

Purity: Protein G affinity chromatography

Target Details

Target: Melanoma

Abstract: [Melanoma Products](#)

Application Details

Application Notes: Optimal dilution of the Melanoma antibody PNL2 should be determined by the researcher.

1. Staining of formalin-fixed tissues requires boiling tissue sections in 10 mM Citrate buffer, pH 6.0, for 10-20 min followed by cooling at RT for 20 min.
2. The prediluted format is supplied in a dropper bottle and is optimized for use in IHC. After epitope retrieval step (if required), drip mAb solution onto the tissue section and incubate at RT for 30 min.\. Immunofluorescence: 0.5-1 µg/mL, Immunohistochemistry (FFPE): 0.5-1 µg/mL for 30 min at RT (1), Prediluted format: incubate for 30 min at RT (2)

Restrictions: For Research Use only

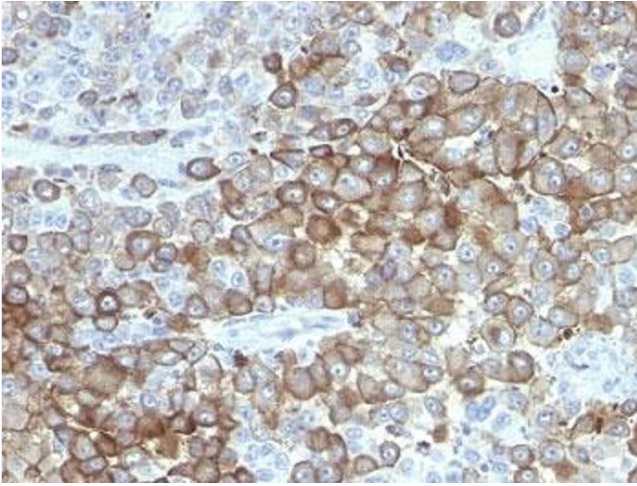
Handling

Buffer: 1 mg/mL in sterile PBS, BSA free, sodium azide free

Preservative: Azide free

Storage: -20 °C, 4 °C

Storage Comment: Store the Melanoma antibody PNL2 at 2-8°C (with azide) or aliquot and store at -20°C or colder (without azide).



Immunohistochemistry (Formalin-fixed Paraffin-embedded Sections)

Image 1. Formalin-fixed, paraffin-embedded human melanoma stained with Melanoma antibody.